

Meet the Nova

SHOW HOME IN LIVINGSTON
15359 1 STREET NW CALGARY, ALBERTA

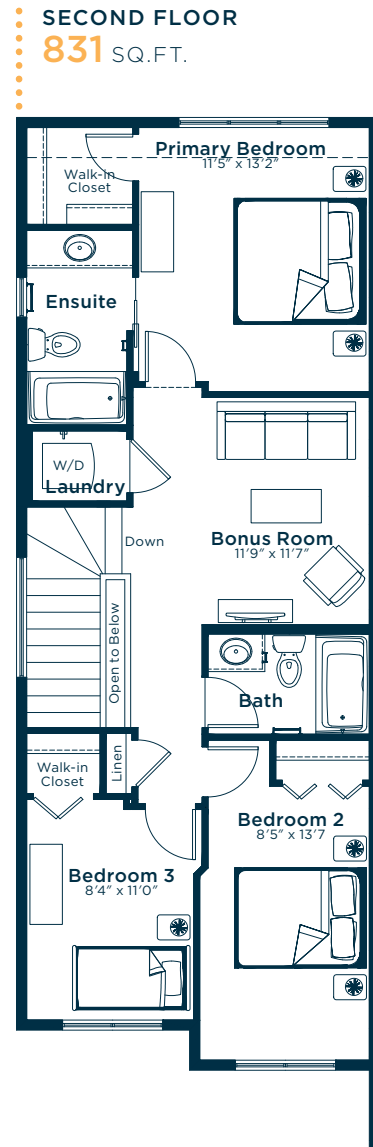
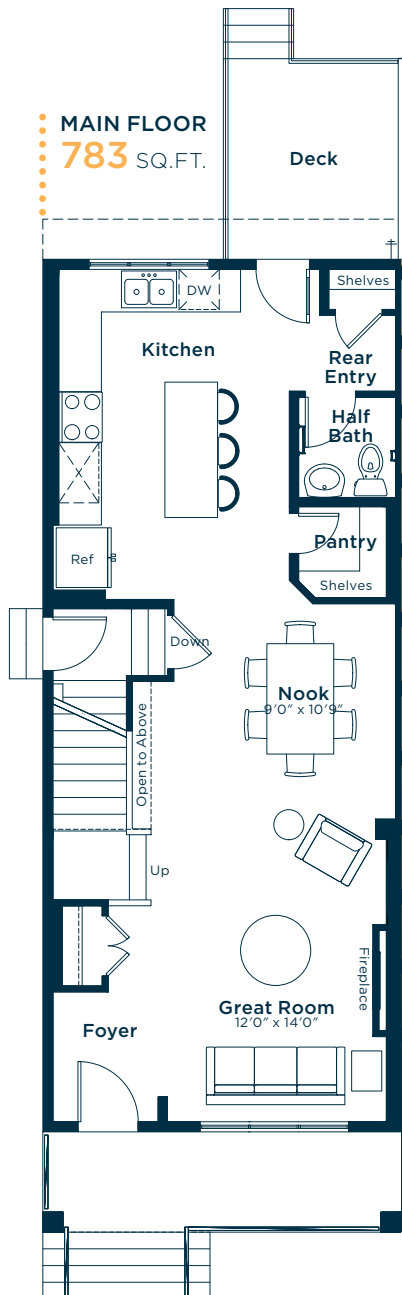


DUPLEX
COLLECTION

1614 SQ.
FT.



2.5



**EXCEL
HOMES**

Simplifying your journey home.

Meet the Nova

SHOW HOME IN LIVINGSTON

Options and upgrades.

MAIN FLOOR

- Luxury Vinyl Plank: Chasing Ice

KITCHEN

- Level 1 Kitchen Upgrade
- Level 1 Fridge
- Backsplash: Tender Grey

SECOND FLOOR:

- Tile: Konkrete Grey

EXTERIOR

- Pressure Treated Rear Deck
- Gasline to BBQ

BASEMENT

- Exterior Side Entry to Basement
- 9' Basement Ceiling Height
- Basement Suite Rough In

OTHER

- Elevation A
- Wall Paint: Designer Grey
- Cabinets: First Class
- Countertop: Polaire
- Additional Disc Lights
- Sprinkler System
- Audio Zone Systems
- Air Conditioning
- Security Pre-wiring
- Please see your Area Manager for the additional upgrades included in your home

For more
information.

Karen Baldwin
LIVINGSTON LANED AREA MANAGER

403-710-7707
LIVINGSTONLANED@EXCELHOMES.CA

EXCELHOMES.CA