

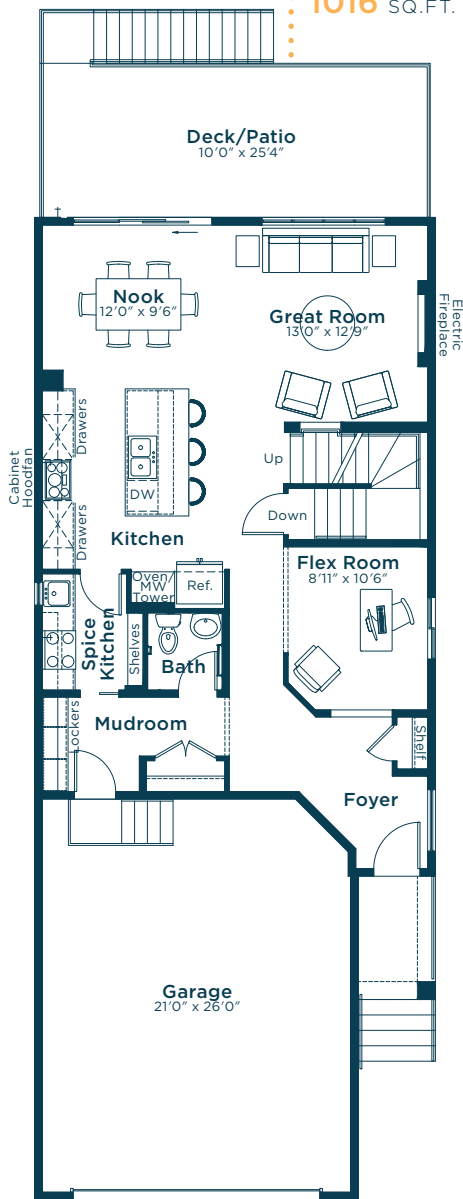
Meet the Maverick

SHOW HOME IN STARLING
102 STARLING PARK NW CALGARY, ALBERTA

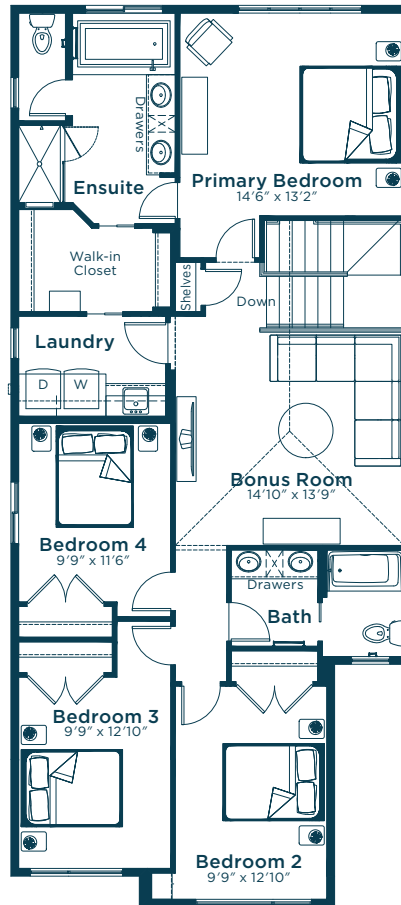
FRONT GARAGE COLLECTION **2442** SQ. FT. **4** **2.5**



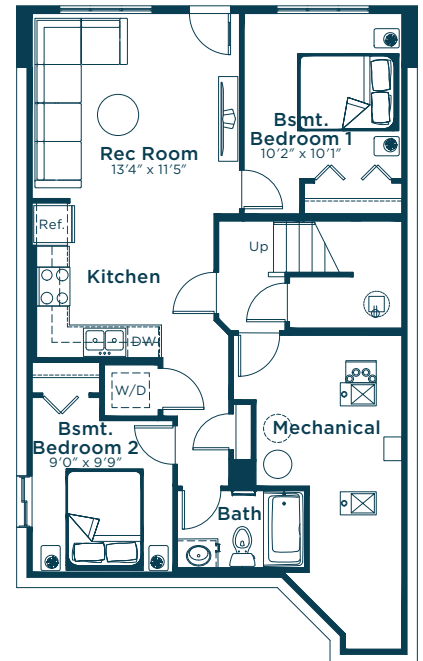
MAIN FLOOR
1016 SQ. FT.



SECOND FLOOR
1426 SQ. FT.



BASEMENT SUITE
702 SQ. FT.



**EXCEL
HOMES**

Simplifying your journey home.

Meet the Maverick

SHOW HOME IN STARLING

Options and upgrades.

MAIN FLOOR

- Full-height Electric Fireplace with Tile Facing
- Lockers to Mudroom
- Increased Size of Rear Windows + Sliding Patio Door
- Additional Potlights to Great Room
- Short Run Conduit to Great Room
- Level 2 8' Doors
- Level 1 Matte Black Door Hardware
- Level 2 Baseboard & Casing
- White & Gold Chandelier to Stairwell
- White & Gold Semi-Flush Mount to Flex Room
- White & Gold Linear Chandelier to Nook
- Fireplace Tile: Black Stack Mosaic
- LVP: The Natural

KITCHEN

- Level 3 Kitchen
- Spice Kitchen
- Black Stainless Steel Gas Range, Cooktop and Wall Oven to Kitchen
- Black Stainless Steel Dishwasher
- Black Stainless Steel Microwave
- Black Stainless Steel Hoodfans
- Gasline to BBQ
- Coal Black Undermount Silgranit Sink to Spice Kitchen
- Level 3 Champagne Bronze Pull Down Faucet to Kitchen & Spice Kitchen
- Additional Potlights
- Upper Cabinets: Fashionista
- Lower Cabinets: River Green
- Backsplash: Titanium, Black Stack Mosaic
- Granite Countertops: Titanium

SECOND FLOOR

- 9' Ceiling Height
- Bank of Drawers to Bath
- Dual Sinks to Bath
- Pocket Door to Bath
- Level 2 8' Doors
- Level 1 Matte Black Door Hardware
- Level 2 Baseboard & Casing
- Countertop Backsplash: Charcoal
- Granite Countertops: Titanium
- Carpet: Gravel Stone

ENSUITE

- Level 2 Ensuite
- Black Shower Door
- Champagne Bronze Widespread Faucets
- Cabinets: Fashionista
- Backsplash: Charcoal, Centura White
- Granite Countertops: Titanium
- Floor Tile: Charcoal

BONUS ROOM

- Vaulted Ceiling
- Additional Potlights
- Short Run Conduit

LAUNDRY

- Level 3 Laundry
- Black Stainless Steel Washer & Dryer
- Level 1 Black Pull Down Faucet
- Granite Countertops: Titanium
- Floor Tile: Charcoal

EXTERIOR

- Rear Pressure Treated Deck with Extension
- Pressure Treated Dropped Landing for Stairs
- Gasline to BBQ
- Extended Garage Length
- 8' Entry Door Height
- 8' Garage Entry & Overhead Door Height
- Keypad Added for Overhead Door
- Glass Railing to Rear Deck
- Black Side Window & Door Frames
- Increased Window Size
- Level 1 Matte Black Door Handleset

BASEMENT

- Developed Walkout Basement Suite (Two Bedroom)
- Standard Washer & Dryer
- Short Run Conduit to Rec Room
- Curved Chrome Shower Rod to Bath
- Cabinets: Black
- Backsplash: Anthracite
- Quartz Countertops: Elegant White
- LVP: The Natural
- Carpet: Gravel Stone, The Natural

OTHER

- Maverick Elevation S
- Black Stainless Steel Appliances
- Blank Wood Post with Black Horizontal Metal Spindled Railing
- Champagne Bronze Plumbing Package
- White & Gold Lighting Package
- Paint: Summit
- Audio Zone Systems
- Air Conditioning
- Security Pre-wiring
- Please see your Area Manager for the additional upgrades included in your home

For more
information.

Tyler Scott
STARLING AREA MANAGER

368-889-7669
STARLING@EXCELHOMES.CA

EXCELHOMES.CA