

# Meet the Maverick

SHOW HOME IN SETON RIDGE  
16 SETONRIDGE PARK SE CALGARY, ALBERTA

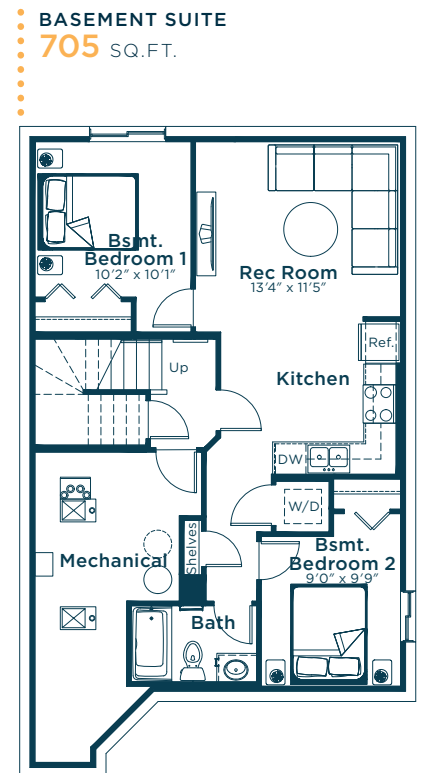
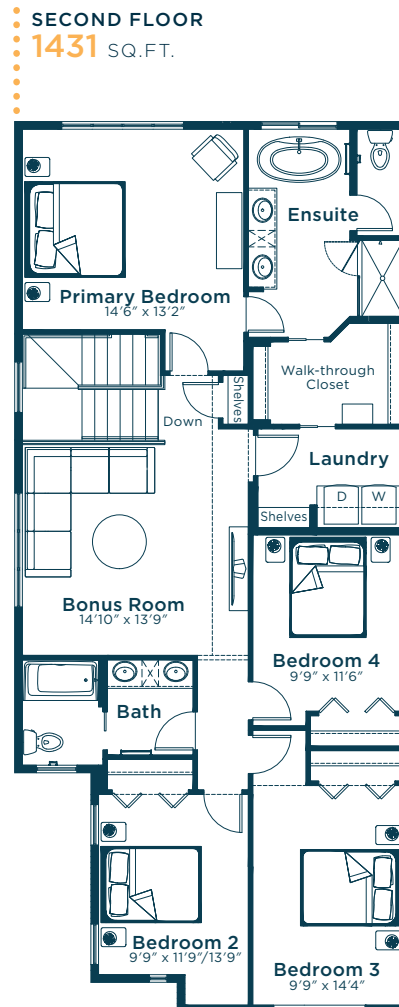
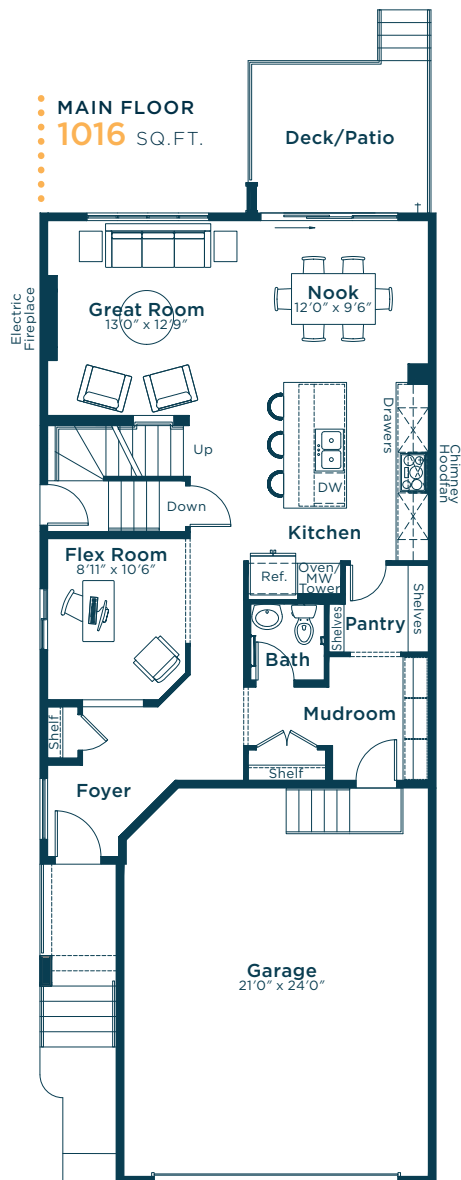


FRONT GARAGE  
COLLECTION

**2447** SQ.  
FT.



**2.5**



**EXCEL  
HOMES**

Simplifying your journey home.

# Meet the Maverick

SHOW HOME IN SETON RIDGE

## Options and upgrades.

### MAIN FLOOR

- Full-height Electric Fireplace with Tile Facing
- Increased Size of Rear Windows + Sliding Patio Door
- Lockers to Mudroom
- Level 2 8' Doors
- Level 1 Black Door Hardware
- Level 2 Baseboards & Casing
- Long Run Conduit to Great Room
- Additional Potlights to Great Room
- White & Gold Flush Mount to Flex Room
- Fireplace Tile: Velvet Glass Breccia
- LVP: The Natural

### KITCHEN

- Level 3 Kitchen
- Black Stainless Steel Appliances
- Level 1 Black Stainless Steel Fridge
- Level 2 Black Stainless Steel Microwave
- Coal Black Undermount Silgranit Sink
- Level 2 Black Spring Faucet
- Additional Potlights
- Upper Cabinets: Mushroom
- Lower Cabinets: Ebony
- Granite Backsplash, Hoodfan Backsplash & Countertops: Perla Venata

### SECOND FLOOR

- Tray Ceiling to Primary Bedroom
- Pocket Door to Bath
- Bank of Three Drawers to Bath
- Dual Sinks to Bath
- Level 2 8' Doors
- Level 2 Baseboards & Casing
- Level 1 Black Door Hardware
- Cabinets: Ebony
- Backsplash: Olympia White Matte, Gatsby Pearl
- Quartz Countertops: Stratum White
- Floor Tile: Pearl
- Carpet: Peaceful

### ENSUITE

- Level 3 Ensuite
- Black Shower Door
- Black Widespread Faucet
- Cabinets: Ebony
- Backsplash: Olympia White Matte, Gatsby Pearl
- Quartz Countertops: Stratum White
- Floor Tile: Pearl

### BONUS ROOM

- Vaulted Ceiling
- Additional Potlights
- Short Run Conduit

### LAUNDRY

- Level 1 Laundry
- Black Stainless Steel Washer & Dryer
- Backsplash: Olympia White Matte
- Floor Tile: Pearl

### EXTERIOR

- Rear Pressure Treated Deck
- Gasline to BBQ
- Extended Garage Length
- 8' Front Door Height
- 8' Garage Entry Door Height
- Black Window & Door Frames

### BASEMENT

- Developed Basement Suite (Two Bedroom)
- Exterior Side Entry to Basement
- Standard Washer & Dryer
- Short Run Conduit to Rec Room
- Additional Disk Light to Rec Room
- Curved Chrome Shower Rod to Bath
- Cabinets: Suede Stone
- Backsplash: Olympia White Matte
- Quartz Countertops: Elegant White
- LVP: The Natural
- Carpet: Peaceful

### OTHER

- Maverick Elevation T
- White & Gold Lighting Package
- Black Plumbing Package
- Black Horizontal Metal Spindled Railing
- Paint: Natural
- Audio Zone Systems
- Air Conditioning
- Security Pre-wiring
- Please see your Area Manager for the additional upgrades included in your home

For more  
information.

**Maci Porter**  
SETON RIDGE AREA MANAGER

**368-889-7675**  
SETONRIDGE@EXCELHOMES.CA

EXCELHOMES.CA