

Meet the Mason

SHOW HOME IN SAVANNA
553 SAVANNA DRIVE NE CALGARY, ALBERTA

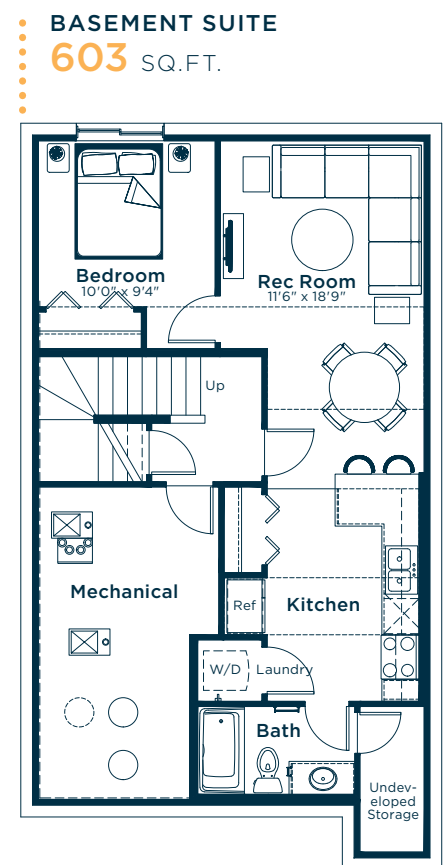
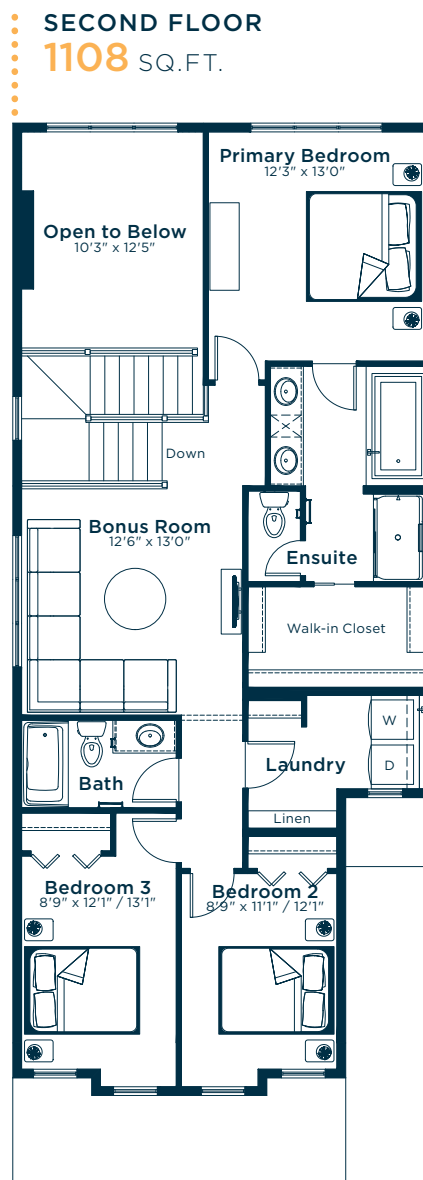
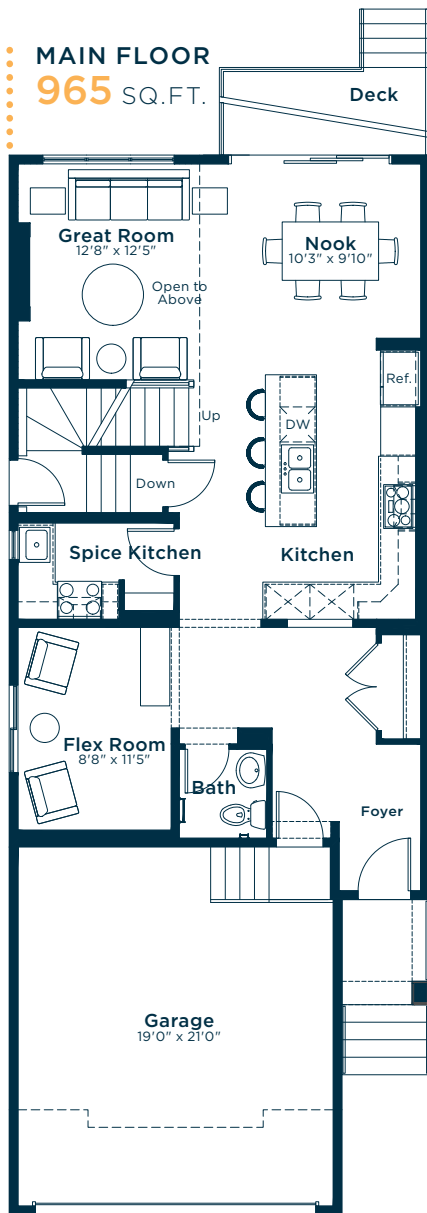


FRONT GARAGE
COLLECTION

2073 SQ.
FT.

3

2.5



**EXCEL
HOMES**

Simplifying your journey home.

Meet the Mason

SHOW HOME IN SAVANNA

Options and upgrades.

MAIN FLOOR

- Increased Rear Windows and Patio Door Height
- 3 Panel Sliding Patio Door
- Additional Pot Lights in Kitchen and Great Room
- LVP: Endless Summer
- Paint Grade Railing and Spindles

KITCHEN

- Level 3 Kitchen Upgrade
- Addition of Spice Kitchen
- Level 2 Fridge
- Level 2 Gas Cooktop
- Level 1 Dishwasher
- Cabinets: Ebony
- Engineered Stone Countertops: Thunder Grey
- Backsplash: Light Grey

GREAT ROOM

- Floor to Ceiling Fireplace
- Tile: Westside White

SECOND FLOOR

- Additional Pot Lights in Bonus Room
- Carpet: Wood Putty
- Tile: Westside White

LAUNDRY ROOM

- Level 1 Laundry Room Upgrade
- Level 2 Washer and Dryer

ENSUITE

- Level 1 Ensuite Upgrade

BASEMENT

- Developed 1 Bedroom Basement Suite
- Stacked In-Suite Washer and Dryer
- Additional Pot Lights in Basement
- Cabinets: First Class
- Engineered Stone Countertops: Flurry
- LVP: Endless Summer
- Backsplash: Tender Grey

EXTERIOR

- Exterior Side Entry to Basement
- Rear Pressure Treated Deck
- Gasline to BBQ

OTHER

- Mason - Elevation A
- Paint: Designer Grey
- Knockdown Ceiling Finish
- Level 3 Finishing Package
- Level 3 Hardware Package
- Level 3 Lighting Package
- Level 2 Plumbing Package
- Air Conditioning
- Audio Zone Systems
- Security Pre-wiring
- Show Home Landscaping
- Please see your Area Manager for the additional upgrades included in your home

For more
information.

Cathey Tracey
SAVANNA AREA MANAGER

403-475-1510
SAVANNA@EXCELHOMES.CA

EXCELHOMES.CA