

Meet the Fleetwood

SHOW HOME IN COBBLESTONE CREEK
600 CREEKMILL COURT SW AIRDRIE, ALBERTA



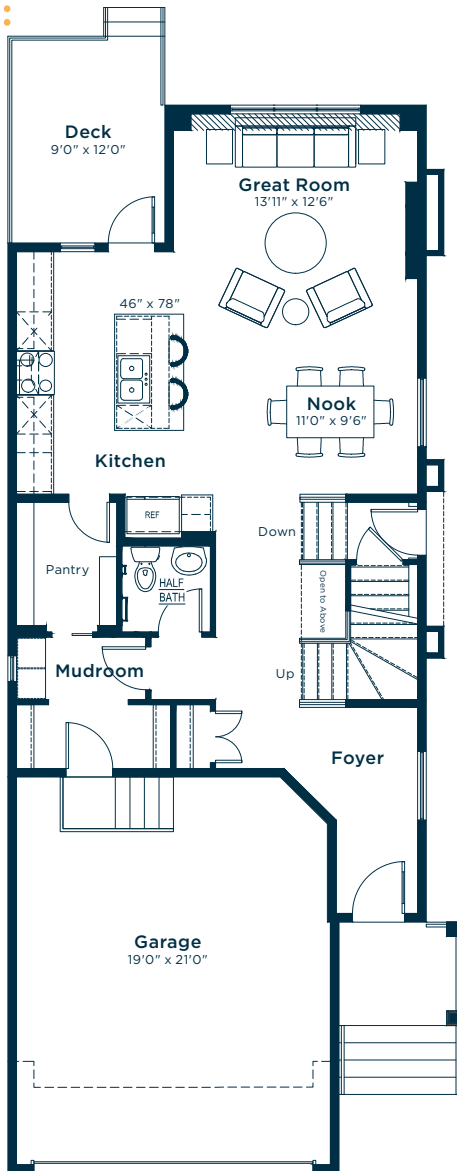
FRONT GARAGE
COLLECTION

2674 SQ. FT.

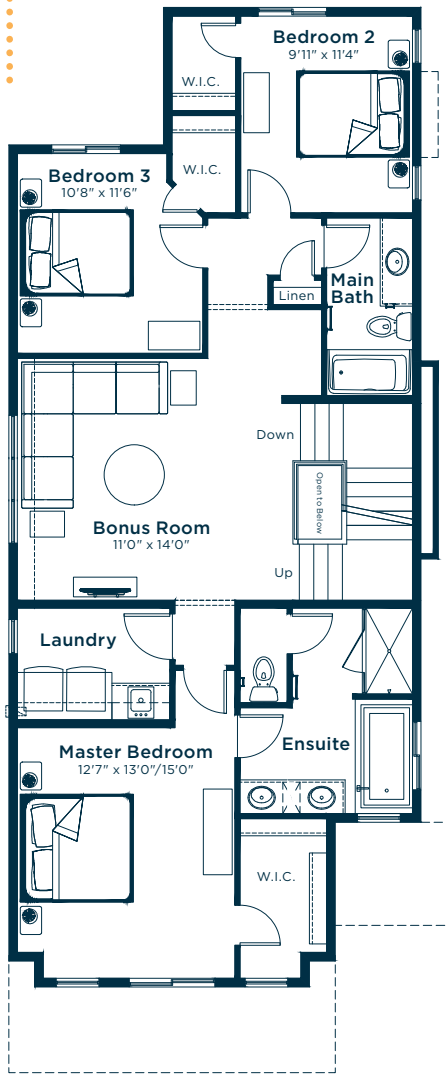
4 bedrooms

3.5 bathrooms

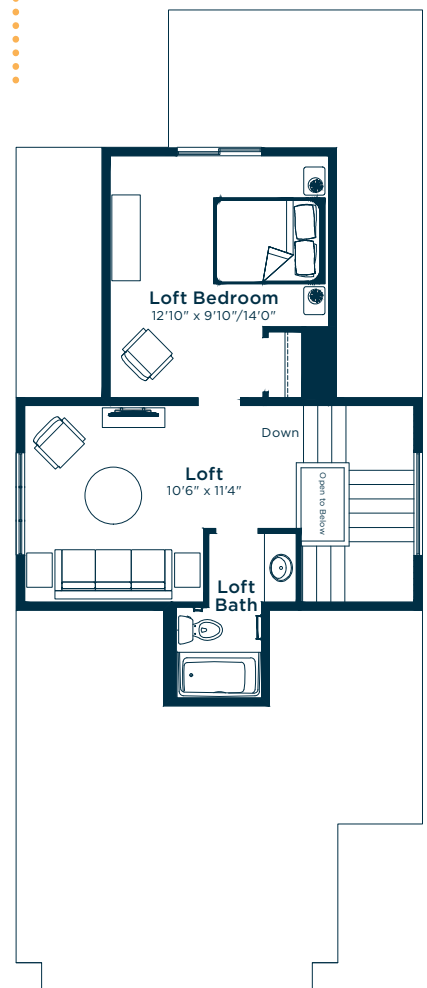
MAIN FLOOR 915 SQ.FT.



SECOND FLOOR 1233 SQ.FT.



LOFT 526 SQ.FT.



**EXCEL
HOMES**

Simplifying your journey home.

Meet the Fleetwood

SHOW HOME IN COBBLESTONE CREEK

Options and upgrades.

MAIN FLOOR

- 9' Main Floor Ceiling
- Increased Rear Windows and Patio Door Height
- Addition of Bench in Mudroom
- LVP: Cool Hand Luke

KITCHEN

- Level 5.5 Kitchen Upgrade
- Level 2 Fridge
- Level 3 Gas Range
- Cabinets: Glacier White
- Island Cabinets: Storm
- Engineered Stone Countertop: Verona
- Backsplash: Artisan Centura White
- Additional Pot Lights

GREAT ROOM

- Full Height Electric Fireplace
- Fireplace Tile: Stella Argento
- Additional Pot Lights

SECOND FLOOR

- Level 3 Laundry Room Upgrade
- Level 2 Washer and Dryer
- Engineered Stone Countertop: Bright White
- Carpet: Wood Putty
- Tile: Stella Argento
- Additional Pot Lights to Bonus Room

ENSUITE

- Level 2 Ensuite Upgrade
- Upgraded Soaker Tub
- Dual Sinks

EXTERIOR

- Exterior Side Entry to Basement
- Gasline to BBQ
- Pressure Treated Rear Deck

OTHER

- Fleetwood Elevation AR
- Knockdown Ceiling Finish
- Paint: Fossil Grey
- Black Farmhouse Lighting Package
- Paint Grade Railings & Iron Spindles
- Level 3 Finishing Package
- Level 2 Plumbing Package
- Air Conditioning
- Audio Zone Systems
- Security Pre-wiring
- Show Home Landscaping
- Please see your Area Manager for the additional upgrades included in your home

For more information.

Maci Porter

COBBLESTONE CREEK AREA MANAGER

587-576-7619

COBBLESTONECREEK@EXCELHOMES.CA

EXCELHOMES.CA