

Meet the Emerson

SHOW HOME IN THE ORCHARDS
2226 CHOKECHERRY CLOSE SW EDMONTON, ALBERTA



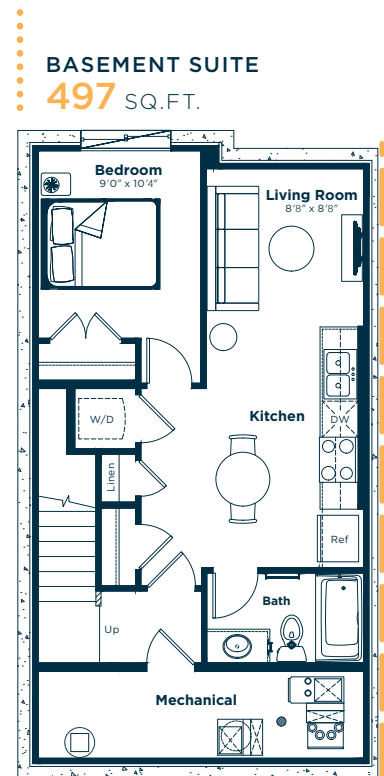
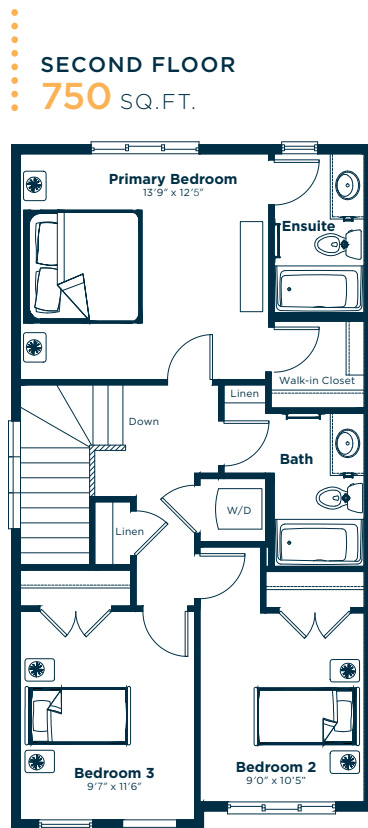
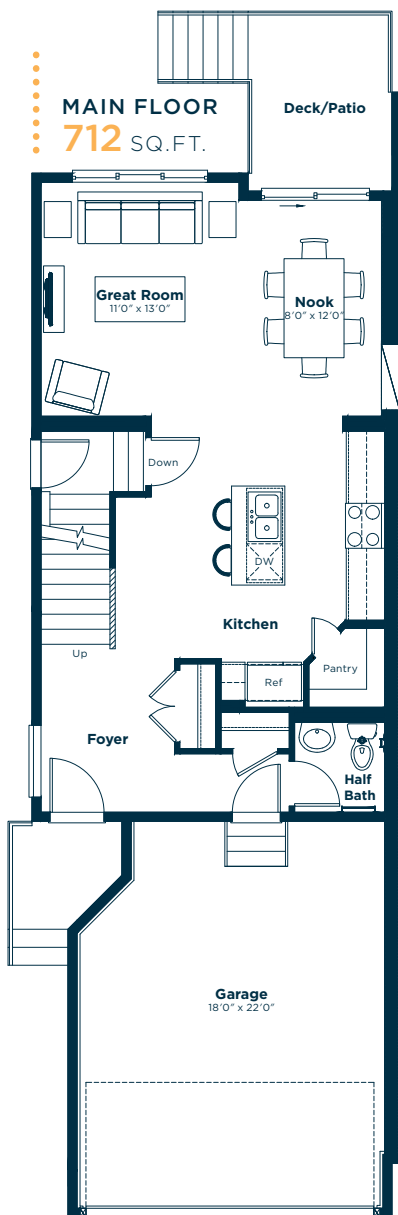
DUPLEX
COLLECTION

1462 SQ. FT.

3



2.5



Meet the Emerson

SHOW HOME IN THE ORCHARDS

Options and upgrades.

MAIN FLOOR

- LVP : Morning Splendor
- Conduit for Wall Mount Units

KITCHEN

- Level 3 Gas Range
- Cabinets: Sheer Beauty
- Quartz Countertop: White Rock
- Backsplash: Vitruvian White Glossy

SECOND FLOOR

- Carpet: Cabana Bay Walking Trail
- Tile: Vitruvian White Glossy

EXTERIOR

- Pressure Treated Aluminum Deck
- Exterior Side Entry to Basement

BASEMENT

- 1 Bedroom Legal Basement Suite
- LVP: Morning Splendor
- Cabinets: Sheer Beauty
- Quartz Countertop: White Rock
- Backsplash: Vitruvian White Glossy

OTHER

- Emerson Elevation RC3
- Paint: Summit
- Audio Zone Systems
- Air Conditioning
- Show Home Landscaping
- Security Pre-wiring
- Please see your Area Manager for the additional upgrades included in your home

For more information.

Amber Amritwar
THE ORCHARDS AREA MANAGER

780-244-0994
THEORCHARDS@EXCELHOMES.CA

EXCELHOMES.CA