

# Meet the Collingwood

SHOW HOME IN CREEKSTONE  
586 CREEKSTONE CIRCLE SW CALGARY, ALBERTA

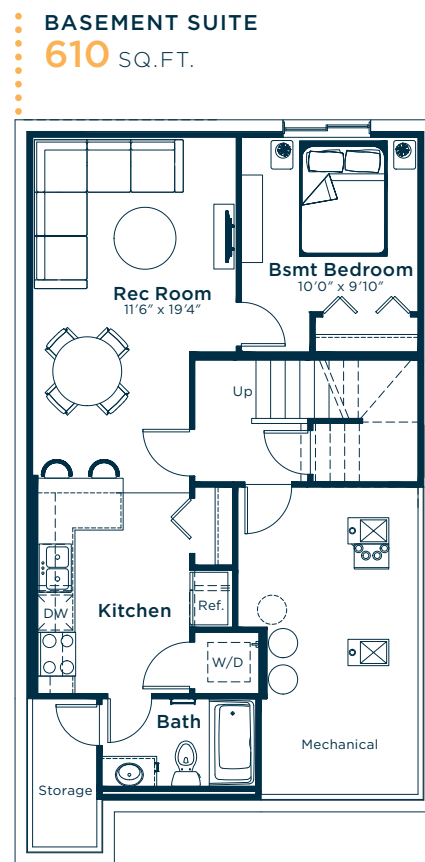
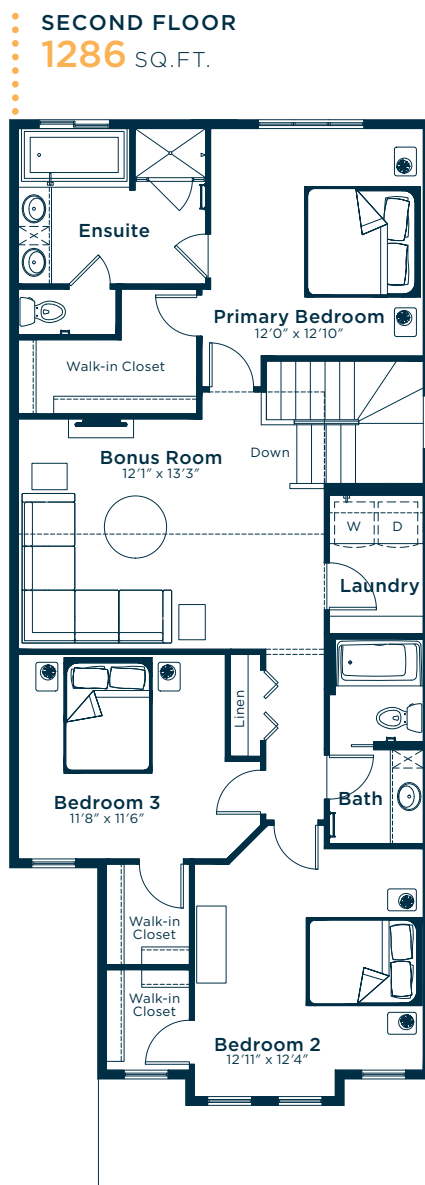
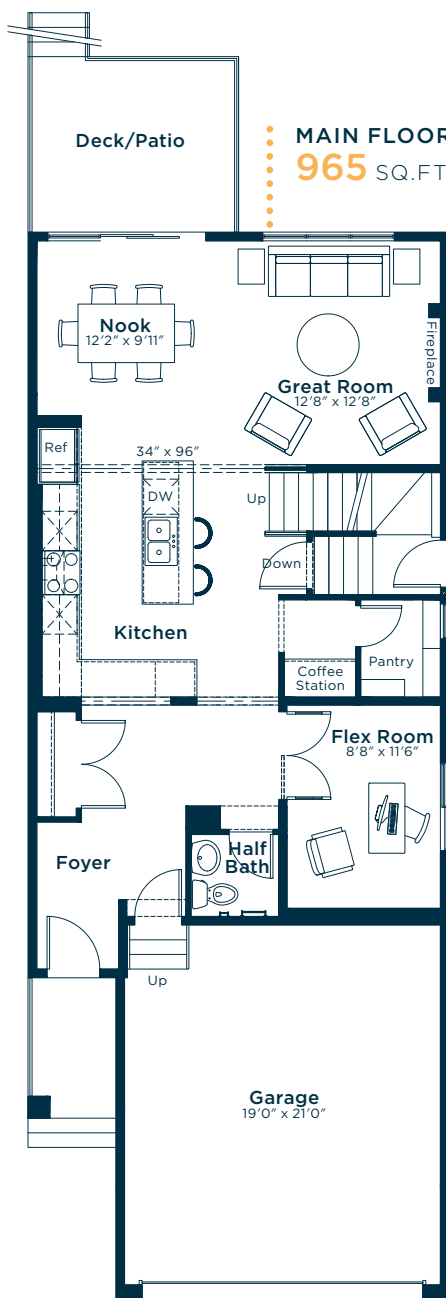


FRONT GARAGE  
COLLECTION

2227 SQ.  
FT.

3

2.5



**EXCEL  
HOMES**

Simplifying your journey home.



# Meet the Collingwood

SHOW HOME IN CREEKSTONE

---

## Options and upgrades.

### MAIN FLOOR

- 9' Main Floor Ceiling
- Additional Pot Lights in Kitchen and Great Room
- French Doors to Flex Room
- Full Height Electric Fireplace
- Fireplace Tile: Graphite
- LVP Flooring: Barefoot Contessa

### KITCHEN

- Level 2 Kitchen Upgrade
- Level 2 Fridge
- Level 3 Gas Range
- Level 1 Dishwasher
- Addition of Coffee Station
- Cabinets: Glacier White
- Island Lower Cabinets: Ebony
- Eng. Stone Countertops: Ivory Coast
- Backsplash: Light Grey

### SECOND FLOOR

- Vaulted Bonus Room
- Additional Pot Lights to Bonus Room
- Cabinets: Glacier White
- Eng. Stone Countertops: Silver Pearl
- Tile: Graphite
- Carpet: Wood Putty

### ENSUITE

- Level 2 Ensuite Upgrade
- Upgraded Soaker Tub
- Dual Sinks
- Additional Bank of Drawers

### LAUNDRY

- Level 1 Laundry Room Upgrade
- Level 2 Washer and Dryer

### BASEMENT

- Developed One Bedroom Basement Suite
- Upgraded Basement Ceiling Height to 8'9"
- Cabinets: Fashionista
- Eng. Stone Countertops: Silver Pearl
- LVP Flooring: Miss Sunshine
- Backsplash: Arctic White

### EXTERIOR

- Exterior Side Entry to Basement
- Pressure Treated Rear Deck
- Gasline to BBQ

### OTHER

- Collingwood Elevation Y
- Level 2 Matte Black Hardware Package
- Level 2 Finishing Package
- Knockdown Ceiling Finish
- Paint: Designer Grey
- Black and Gold Lighting Package
- Level 1 Matte Black Plumbing Package
- Paint Grade Railing and Spindles
- Audio Zone Systems
- Air Conditioning Included
- Show Home Landscaping
- Security Pre-wiring
- Please see your Area Manager for the additional upgrades included in your home



For more  
information.

**Faryn Salloway**  
CREEKSTONE AREA MANAGER

**587-576-8656**  
CREEKSTONE@EXCELHOMES.CA



---

EXCELHOMES.CA