

Meet the Burton

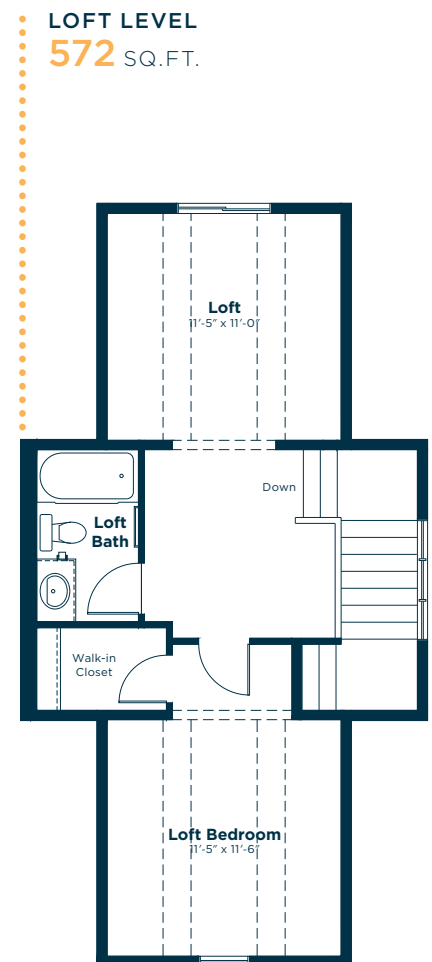
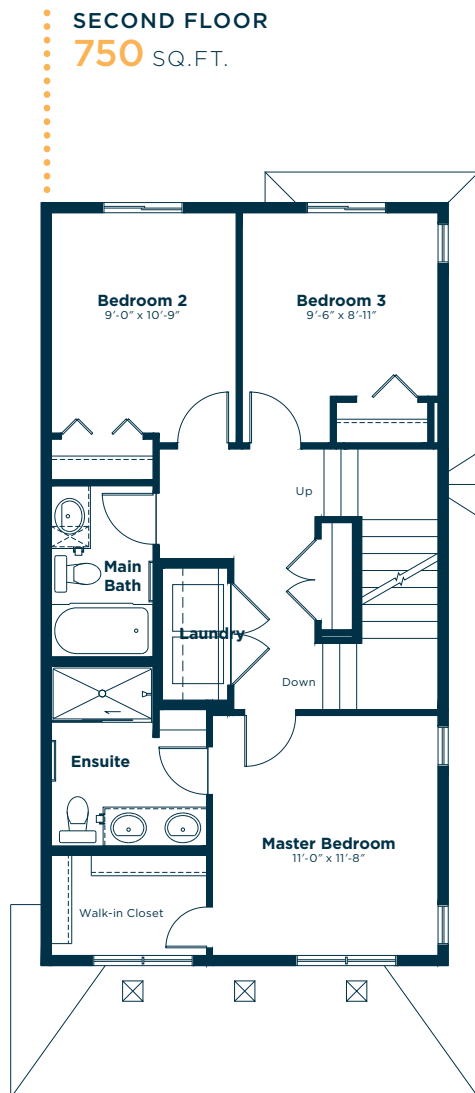
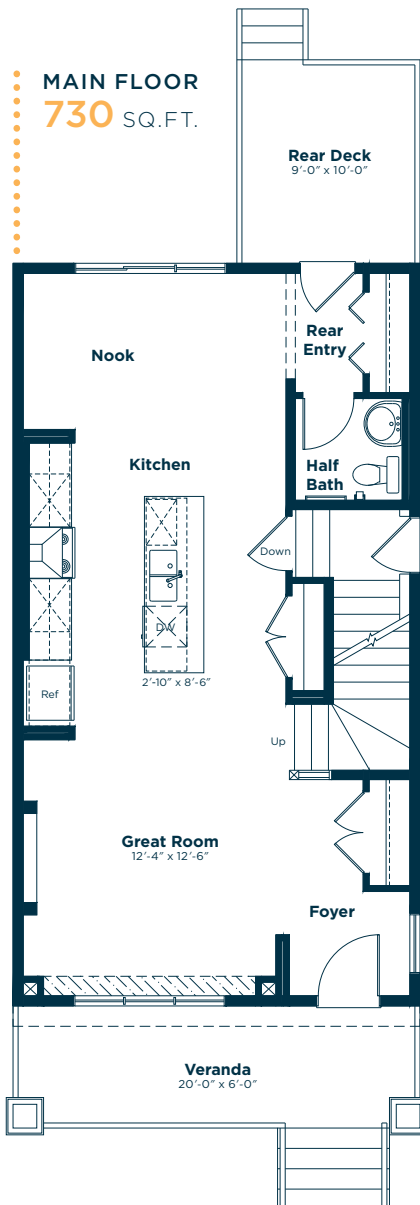
SHOW HOME IN HEARTLAND
57 MORGAN STREET COCHRANE, ALBERTA



2052 SQ. FT.

4 

3.5 



**EXCEL
HOMES**

Simplifying your journey home.

Meet the Burton

SHOW HOME IN HEARTLAND

Options and upgrades.

MAIN FLOOR

- Upgraded Interior Doors & Hardware
- Paint Grade Railing & Paint Grade Spindles
- Wall Paint: Summit
- LVP: Miss Sunshine
- Tile: H24 Black
- Carpet: Fine Silver

KITCHEN

- Upgraded Kitchen
- Additional Pot Lights
- Upgraded Refrigerator
- Upgraded Black Stainless-Steel Microwave
- Cabinets: Glacier White
- Engineered Stone: Carbon
- Baskplash: Brick Lay, Snow

GREAT ROOM

- Additional Pot Lights
- Full Height Electric Fireplace

SECOND FLOOR

- Upgraded Interior Doors & Hardware
- Wall Paint: Summit
- LVP: Miss Sunshine
- Tile: H24 Black
- Carpet: Fine Silver

EXTERIOR

- Detached Garage
- Pressure Treated Deck
- Gasline to BBQ

ENSUITE

- Upgraded Ensuite
- Cabinets: Glacier White
- Engineered Stone: Snow
- Baskplash: Brick Lay, Snow

MAIN BATH

- Upgraded Tubshower to Shower
- Bank of Two Drawers
- Second Sink
- Cabinets: Glacier White
- Engineered Stone: Snow
- Baskplash: Brick Lay, Snow

BASEMENT

- 8'9" Ceiling Height
- Basement Entry to Interior Stairwell

LOFT

- Cabinets: Glacier White
- Engineered Stone: Snow
- Wall Paint: Summit
- Tile: H24 Black
- Carpet: Fine Silver

OTHER

- Knockdown Ceiling Finishing
- Black Farmhouse Lighting Package Audio Zone System
- Air Conditioner Unit
- Security Prewiring
- Please see your Area Manager for the additional upgrades included in your home

For more
information.

Maci Porter
HEARTLAND ACTING AREA MANAGER

403-981-2244
HEARTLAND@EXCELHOMES.CA

EXCELHOMES.CA