

# Meet the Bennett

SHOW HOME IN HOMESTEAD  
283 HOMESTEAD GROVE NE CALGARY, ALBERTA



FRONT GARAGE  
COLLECTION

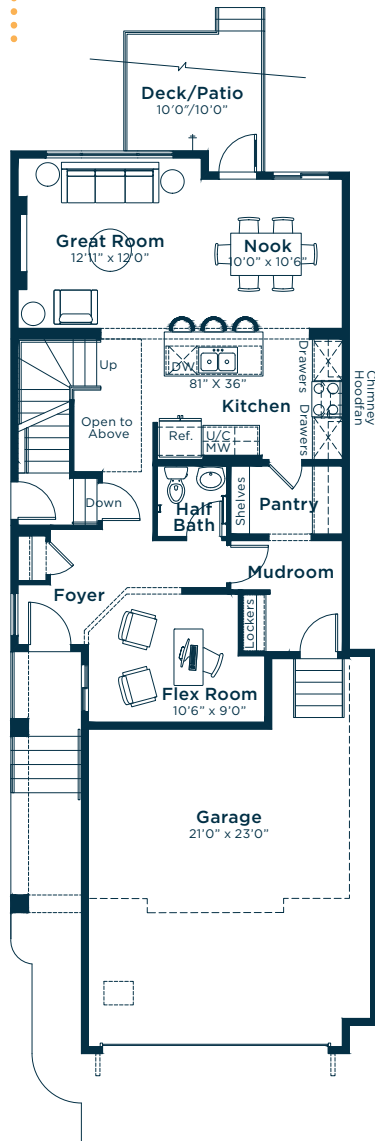
2054 SQ.  
FT.



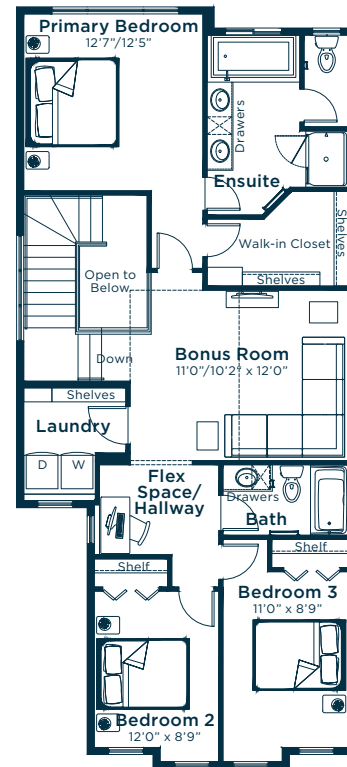
2.5



## MAIN FLOOR 914 SQ.FT.



## SECOND FLOOR 1140 SQ.FT.



**EXCEL  
HOMES**

Simplifying your journey home.

# Meet the Bennett

SHOW HOME IN HOMESTEAD

## Options and upgrades.

### MAIN FLOOR

- Increased Rear Window Height
- Lockers in Mudroom
- Level 1 Hardware
- Chandelier to Nook
- Semi-Flush Mount Light Fixture to Flex Room
- LVP: The Score

### KITCHEN

- Level 2 Kitchen Upgrade
- Level 1 Fridge
- Level 1 Built-in Microwave
- Coffee Station
- Black Stainless Steel Appliances
- Level 1 Faucet
- Coal Black Silgranit Undermount Sink
- Under Cabinet Lighting
- Cabinets Riser Tight to Ceiling
- Additional Potlights
- Upper Cabinets: Glacier White
- Lower Cabinets: Stone Grey
- Engineered Stone Countertops: Lincoln
- Backsplash: Black Stick - Matte - HSL

### GREAT ROOM

- Full-Height Electric Fireplace with Panel Facing
- Additional Potlights
- Long Run Conduit

### SECOND FLOOR

- Level 1 Hardware
- Engineered Stone Countertops: Lincoln
- Backsplash: Volkas Grigo - Polished - VSL
- Carpet: Even Tide
- Tile: Volkas Grigo - Polished - VSL

### LAUNDRY

- Level 1 Laundry Upgrade

### BONUS ROOM

- Vaulted Bonus Room Ceiling
- Additional Potlights
- Short-Run Conduit

### ENSUITE

- Level 1 Ensuite Upgrade
- Swing Door
- Black Shower Door Upgrade

### MAIN BATH

- Bank of 2 Drawers

### EXTERIOR

- Pressure Treated Rear Deck
- Upsized Gasline to BBQ and Range
- Extended Garage Length & Width
- Exterior Track Lighting

### OTHER

- Bennett Elevation L
- Audio Zone System
- Security Prewiring
- Air Conditioning
- Level 2 Trim
- Level 1 Door Hardware
- Paint Grade Railing with Metal Spindles
- Large Chandelier to Stairwell
- Level 1 Black Plumbing Package
- Level 2 Doors
- Black Farmhouse Lighting Package
- Paint: Platinum
- Please see your Area Manager for the Additional Upgrades included in your Home

For more  
information.

**Jeff Van de Cappelle**  
HOMESTEAD AREA MANAGER

**403-475-5817**  
HOMESTEAD@EXCELHOMES.CA

EXCELHOMES.CA