



Meet the Wren

QUICK POSSESSION HOME IN SETON RIDGE
70 SETONVISTA GROVE SE CALGARY, ALBERTA



DUPLEX
COLLECTION

1520 SQ.
FT.

3

2.5



This home's interior palette is the following:



LVP:
Chasing ice



Kitchen,
Ensuite & Bath
Cabinets:
Natural Affinity



Kitchen Island
Cabinets:
Salt of the Earth



Kitchen
Backsplash:
Breccia



Ensuite & Bath
Backsplash:
Capri White Matte



Quartz
Countertops:
Elegant White



Carpet:
August Grove



Paint:
Crystal

This home features the following:

- Level 2 kitchen
- Level 2 fridge
- Level 1 matte black door hardware
- Full-height electric fireplace
- Additional potlights to kitchen, great room & bonus room
- Black metal spindled railing
- Upgrade tubshower to shower in ensuite
- Bank of two drawers to ensuite
- Bank of two drawers to second floor bath
- Vaulted bonus room ceiling
- Exterior side entry to basement
- Rear pressure treated deck
- Gasline to BBQ
- Basement suite rough-in (one bedroom)

Standard features:

- BUILT GREEN® certified home
- Stainless steel appliances
- Thermally fused laminate cabinets
- Luxury vinyl plank throughout entire main floor and second floor wet areas
- Please see your Area Manager for the complete list of standard features

You can purchase this home for:

\$

including home, lot and GST

Home availability:



For more information:



Macy Porter

SETON RIDGE AREA MANAGER

T: 368-889-7675

E: setonridge@excelhomes.ca

**EXCEL
HOMES**

..... Simplifying your journey home.

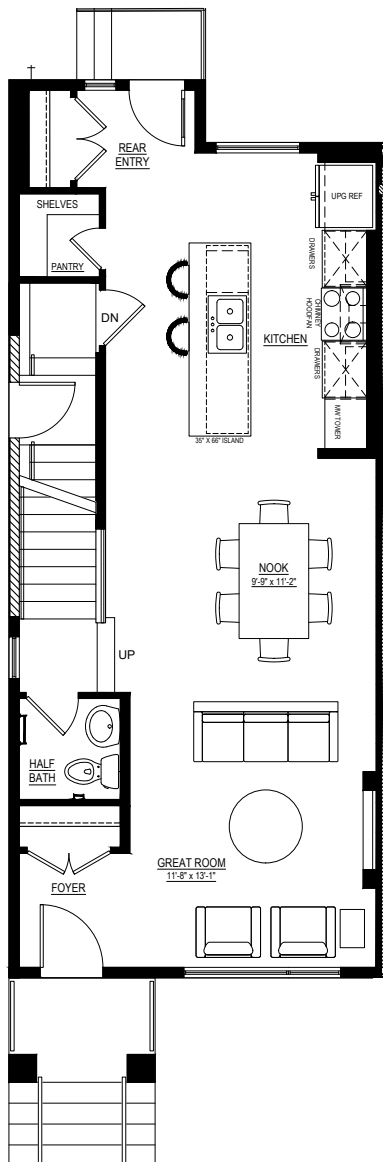
This floorplan represents one version of this home and measurements are approximate. The square footage, measurements and layout may vary based on the elevation and/or lot. All elevations shown are artist's concept only and will vary by community. The builder reserves the right to make modifications or substitutions should they be necessary. All plans, options, dimensions, specifications, materials and drawings are subject to change without notice. E.&O.E

Meet the Wren

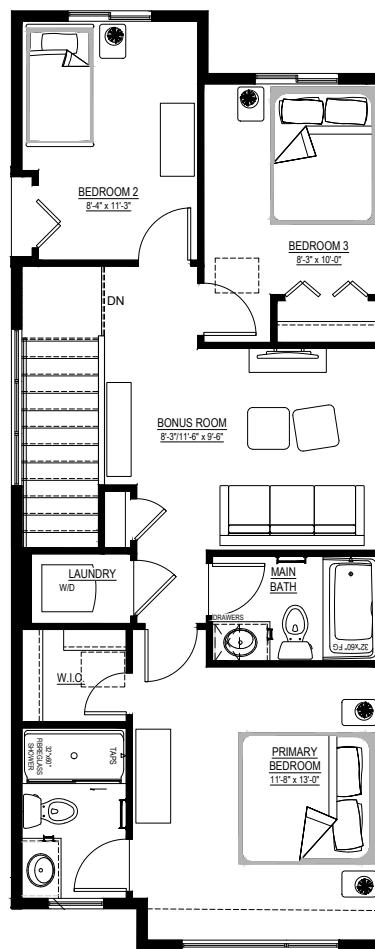
QUICK POSSESSION HOME IN SETON RIDGE 70 SETONVISTA GROVE SE

Floor plans

MAIN FLOOR
749 SQ.FT.



SECOND FLOOR
780 SQ.FT.



For more
information.

Maci Porter
SETON RIDGE AREA MANAGER

368-889-7675
SETONRIDGE@EXCELHOMES.CA

EXCELHOMES.CA

This floorplan represents one version of this home and measurements are approximate. The square footage, measurements and layout may vary based on the elevation and/or lot. All elevations shown are artist's concept only and will vary by community. The builder reserves the right to make modifications or substitutions should they be necessary. All plans, options, dimensions, specifications, materials and drawings are subject to change without notice. E.&O.E