

# Meet the Sienna

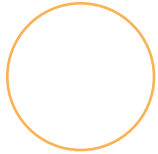
QUICK POSSESSION HOME IN VITA CRYSTALLINA  
7059 182 AVENUE NW EDMONTON, ALBERTA



1636 SQ. FT.



## This home's interior palette is the following:



Cabinets:  
Cloud White



Backsplash:  
Dark Grey Glossy



Quartz Countertop:  
Diavik



LVP:  
Montreal



Carpet:  
Steel



Paint:  
Designer Grey

## This home features the following

- Main floor bedroom and full bathroom
- Upgraded kitchen
- Upgraded shower in the ensuite
- Exterior side entry to basement
- 1 bedroom basement suite

## Standard features:

- BUILT GREEN® certified home
- Stainless steel appliances
- Thermally fused laminate cabinets
- Luxury vinyl plank throughout entire main floor and second floor wet areas
- Please see your Area Manager for the complete list of standard features

## You can purchase this home for:



including home, lot and GST

## Home availability:



## For more information:



**André Léauté**  
VITA CRYSTALLINA AREA MANAGER

T: 780-718-4869  
E: vitacrystallina@excelhomes.ca



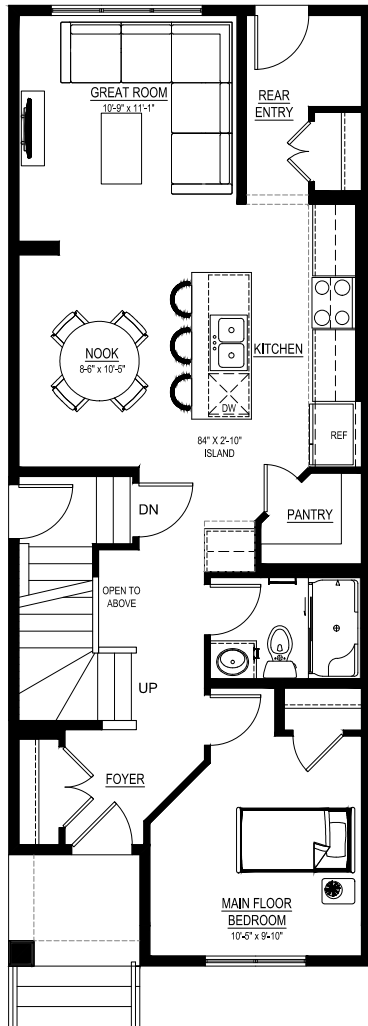
..... Simplifying your journey home.

# Meet the Sienna

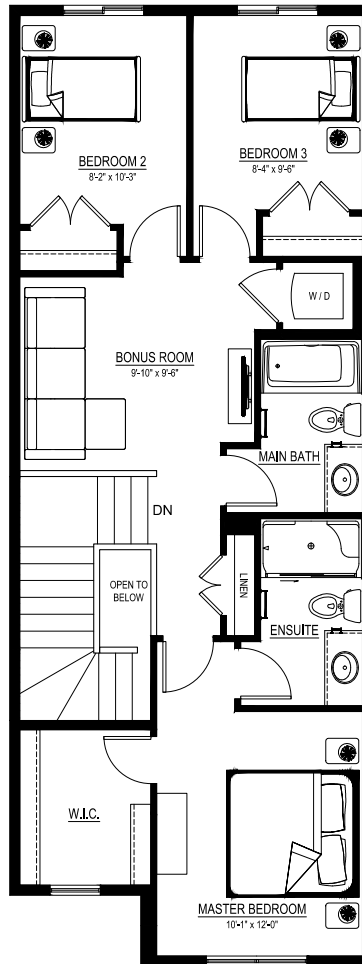
QUICK POSSESSION IN VITA CRYSTALLINA 7059 182 AVENUE NW

## Floor plans

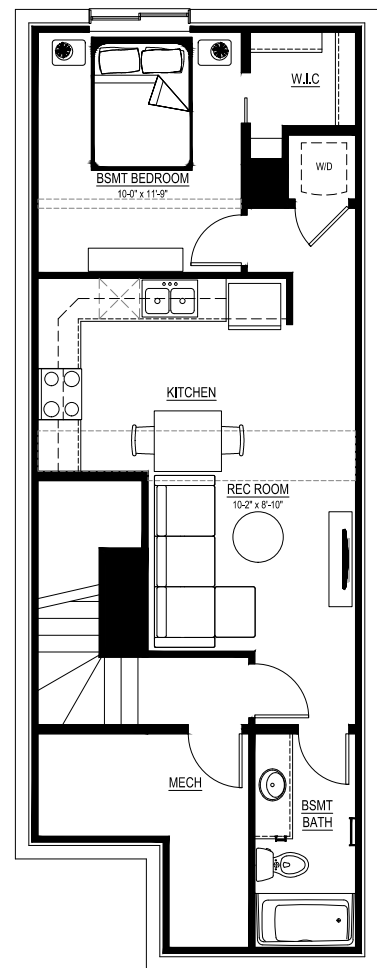
MAIN FLOOR  
819 SQ.FT.



SECOND FLOOR  
817 SQ.FT.



BASEMENT SUITE  
580 SQ.FT.



For more information.

André Léauté  
VITA CRYSTALLINA AREA MANAGER

780-718-4869  
VITACRYSTALLINA@EXCELHOMES.CA

EXCELHOMES.CA