

Meet the Sienna

QUICK POSSESSION HOME IN EDMONTON
3676 ERLANGER ROAD NW EDMONTON, ALBERTA



LANED COLLECTION

1636 SQ. FT.

3

2.5



This home's interior palette is the following:



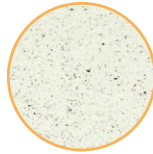
LVP: Kelowna



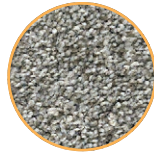
Cabinets: Free Spirit



Backsplash: Vitruvian White



Quartz Countertops: Crystal Crescent



Carpet: Walking Trail



Paint: Summit

This home features the following:

- Level 1 Kitchen
- Main Floor Bedroom and Bathroom
- Exterior Side Entry to Basement

Standard features:

- BUILT GREEN® certified home
- Stainless steel appliances
- Thermally fused laminate cabinets
- Luxury vinyl plank throughout entire main floor and second floor wet areas
- Please see your Area Manager for the complete list of standard features

You can purchase this home for:

\$

including home, lot and GST

Home availability:



For more information:



Anabela daPonte-Cordeiro
EDGEMONT AREA MANAGER

T: 780-756-8515
E: edgemont@excelhomes.ca



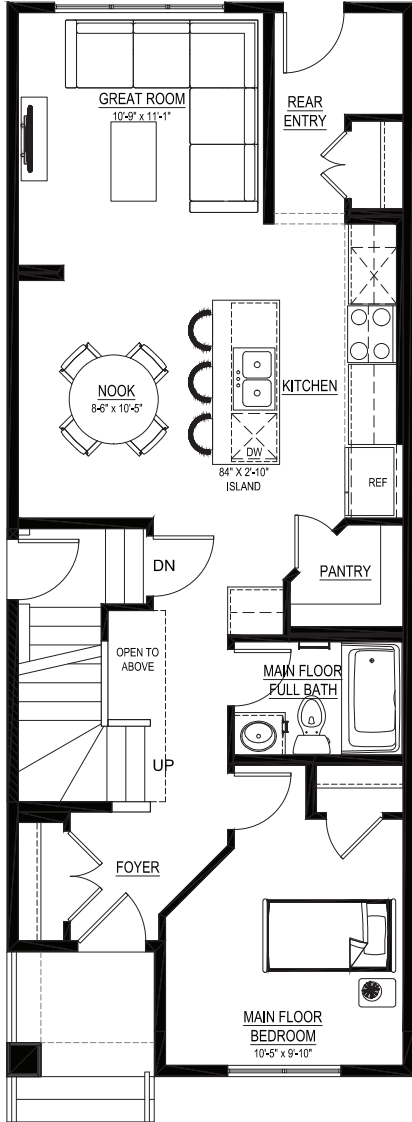
Simplifying your journey home.

Meet the Sienna

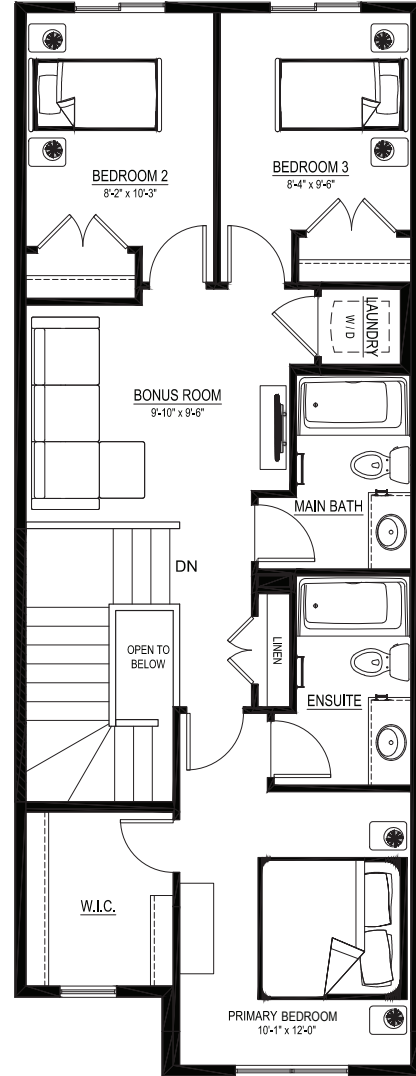
QUICK POSSESSION HOME IN EDMONTON 3676 ERLANGER ROAD NW

Floor plans

MAIN FLOOR
819 SQ.FT.



SECOND FLOOR
817 SQ.FT.



For more information.

Anabela daPonte-Cordeiro
EDMONTON AREA MANAGER

780-756-8515
EDMONTON@EXCELHOMES.CA

EXCELHOMES.CA