

Meet the Sienna

QUICK POSSESSION HOME IN ALCES
2275 ALCES DRIVE SW EDMONTON, ALBERTA



1636 SQ. FT. 4 3



This home's interior palette is the following:

This home features the following:

- Level 1 kitchen upgrade complete with crown moulding, island extension, 42" upper cabinets, and one pots and pans drawer
- Bedroom on main floor
- Full bath on main floor
- 9' basement ceiling height
- 1-bedroom basement suite rough-in
- Exterior side entry to basement
- Detached double car garage

Standard features:

- BUILT GREEN® certified home
- Complete 6-piece ENERGY STAR® rated appliance package
- 1 1/4" quartz countertops throughout
- Luxury vinyl plank throughout entire main floor and second floor wet areas
- Full yard landscaping
- Please see your Area Manager for the complete list of standard features

You can purchase this home for:

\$

including home, lot and GST

Home availability:

For more information:



Sudip Punoria
ALCES AREA MANAGER

T: 780-709-8730
E: spunoria@excelhomes.ca



..... Simplifying your journey home.

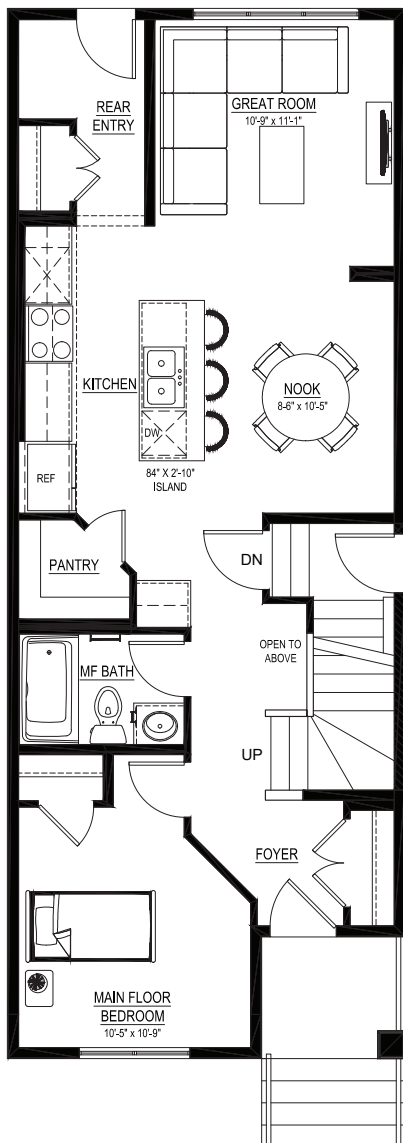
This floorplan represents one version of this home and measurements are approximate. The square footage, measurements and layout may vary based on the elevation and/or lot. All elevations shown are artist's concept only and will vary by community. The builder reserves the right to make modifications or substitutions should they be necessary. All plans, options, dimensions, specifications, materials and drawings are subject to change without notice. E.&O.E

Meet the Sienna

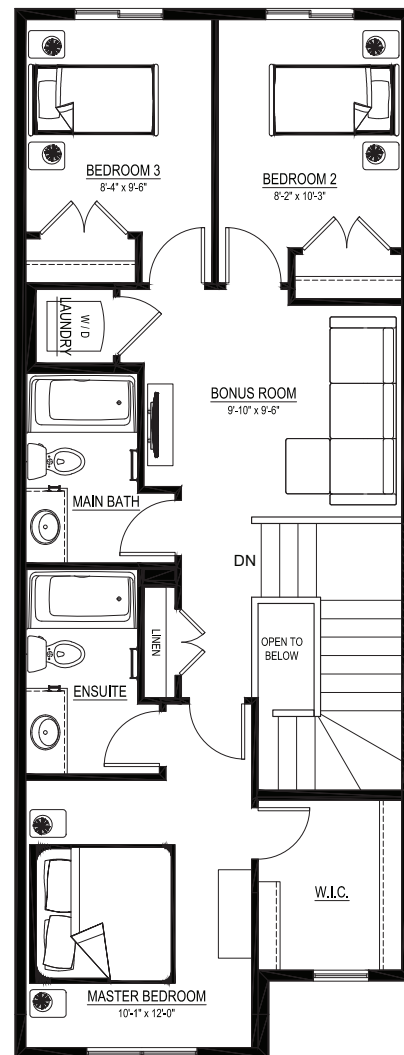
QUICK POSSESSION HOME IN ALCES 2275 ALCES DRIVE SW

Floor plans

MAIN FLOOR
819 SQ.FT.



SECOND FLOOR
817 SQ.FT.



For more
information.

Sudip Punoria
ALCES AREA MANAGER

780-709-8730
SPUNORIA@EXCELHOMES.CA

EXCELHOMES.CA

This floorplan represents one version of this home and measurements are approximate. The square footage, measurements and layout may vary based on the elevation and/or lot. All elevations shown are artist's concept only and will vary by community. The builder reserves the right to make modifications or substitutions should they be necessary. All plans, options, dimensions, specifications, materials and drawings are subject to change without notice. E.&O.E