

Meet the Sage

QUICK POSSESSION HOME IN VITA CRYSTALLINA
7055 182 AVENUE NW EDMONTON, ALBERTA



1227 SQ. FT.



2.5



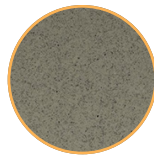
This home's interior palette is the following:



Cabinets: Free Spirit



Backsplash: White Glossy



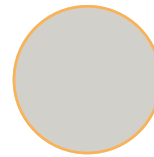
Quartz Countertop: Sudbury



LVP: Kelowna



Carpet: Weather



Paint: Crystal

This home features the following

- Exterior side entry to basement
- Upgraded shower in the ensuite

Standard features:

- BUILT GREEN® certified home
- Stainless steel appliances
- Thermally fused laminate cabinets
- Luxury vinyl plank throughout entire main floor and second floor wet areas
- Please see your Area Manager for the complete list of standard features

You can purchase this home for:



including home, lot and GST

Home availability:



For more information:



André Léauté
VITA CRYSTALLINA AREA MANAGER

T: 780-718-4869
E: vitacrystallina@excelhomes.ca



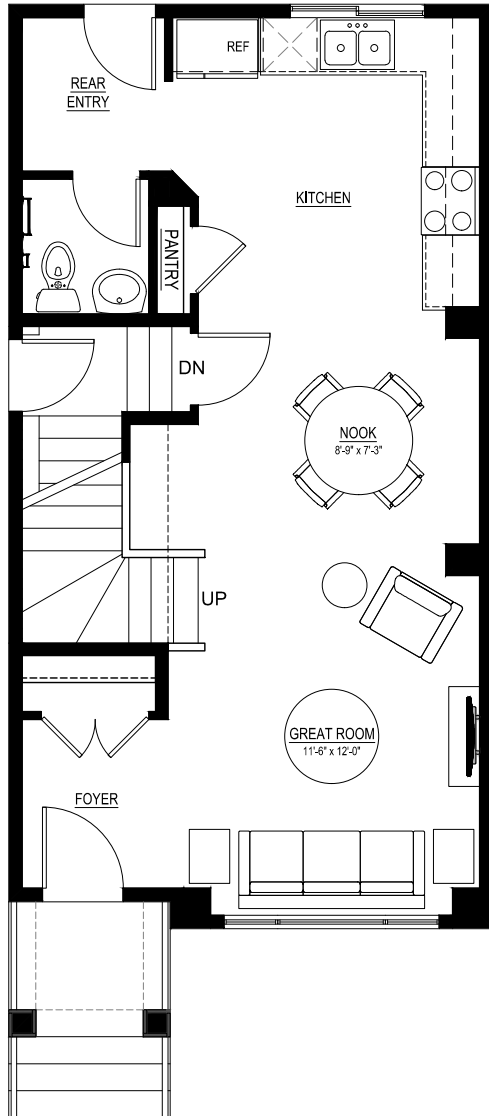
..... Simplifying your journey home.

Meet the Sage

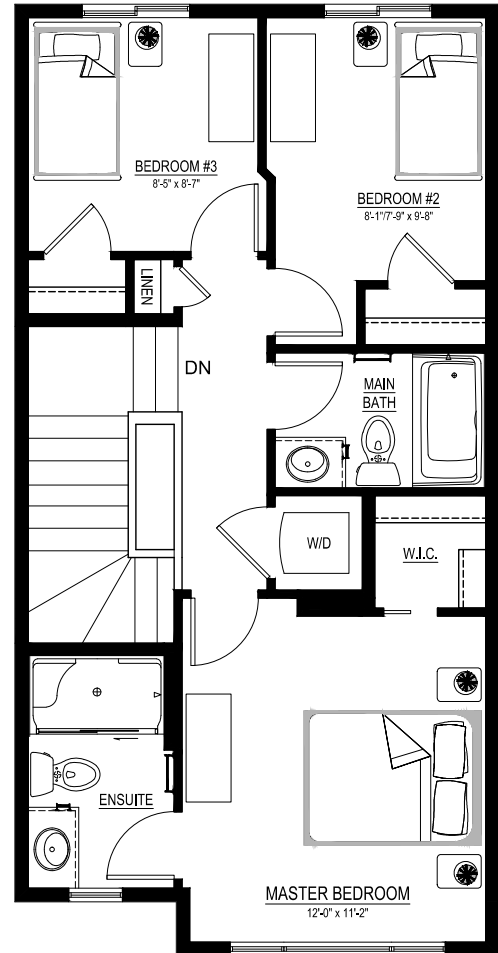
QUICK POSSESSION IN VITA CRYSTALLINA 7055 182 AVENUE NW

Floor plans

MAIN FLOOR
611 SQ.FT.



SECOND FLOOR
616 SQ.FT.



For more information.

André Léauté
VITA CRYSTALLINA AREA MANAGER

780-718-4869
VITACRYSTALLINA@EXCELHOMES.CA

EXCELHOMES.CA