

# Meet the Rosewood

QUICK POSSESSION HOME IN EDMONTON  
9106 ELVES LOOP NW EDMONTON, ALBERTA



FRONT GARAGE  
COLLECTION

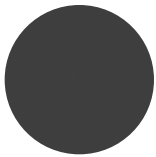
2238 SQ.  
FT.



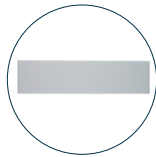
## This home's interior palette is the following:



LVP:  
Tundra



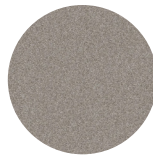
Cabinets:  
Charcoal



Backsplash:  
White Glossy



Quartz  
Countertops:  
Flint



Carpet:  
Fog



Paint:  
Summit

## This home features the following:

- Level 1 kitchen upgrade complete with crown moulding, island extension, 42" upper cabinets, and one pots and pans drawer
- Level 1 ensuite upgrade complete with a soaker tub, standing shower with tile surround, dual sinks and an additional bank of drawers
- Level 1 pendant to island
- Main floor bedroom
- Full bath on main floor
- Black metal spindled railing
- 9' foundation height
- Exterior side entry to basement
- Basement suite rough-in (two bedroom)

## Standard features:

- BUILT GREEN® certified home
- Complete 6-piece ENERGY STAR® rated appliance package
- 1 1/4" quartz countertops throughout
- Luxury vinyl plank throughout entire main floor and second floor wet areas
- Full yard landscaping
- Please see your Area Manager for the complete list of standard features

## You can purchase this home for:

\$

including home, lot and GST

## Home availability:



## For more information:



**Anabela daPonte-Cordeiro**  
EDGEMONT AREA MANAGER

T: 780-756-8515  
E: [edgemont@excelhomes.ca](mailto:edgemont@excelhomes.ca)

**EXCEL  
HOMES**

..... Simplifying your journey home.

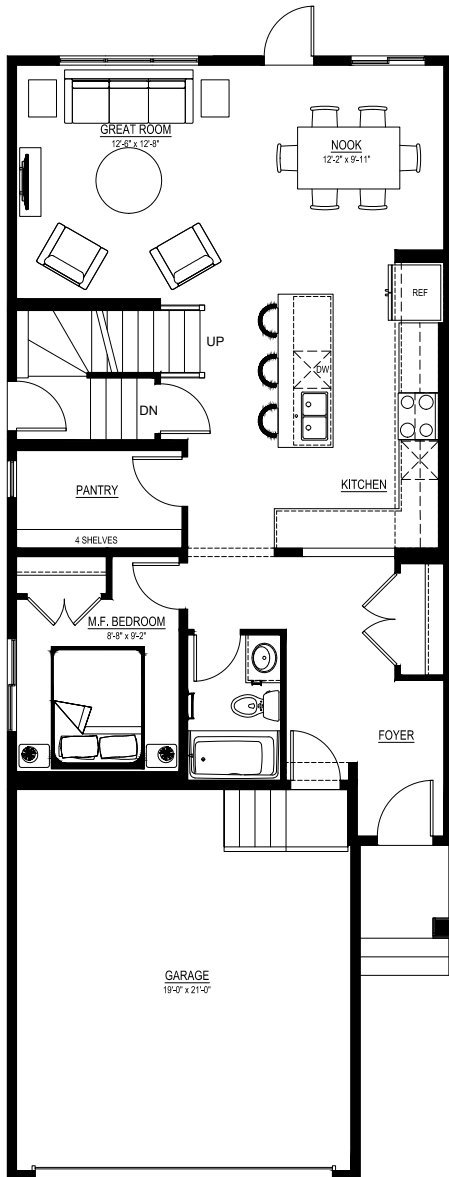
Meet the

# Rosewood

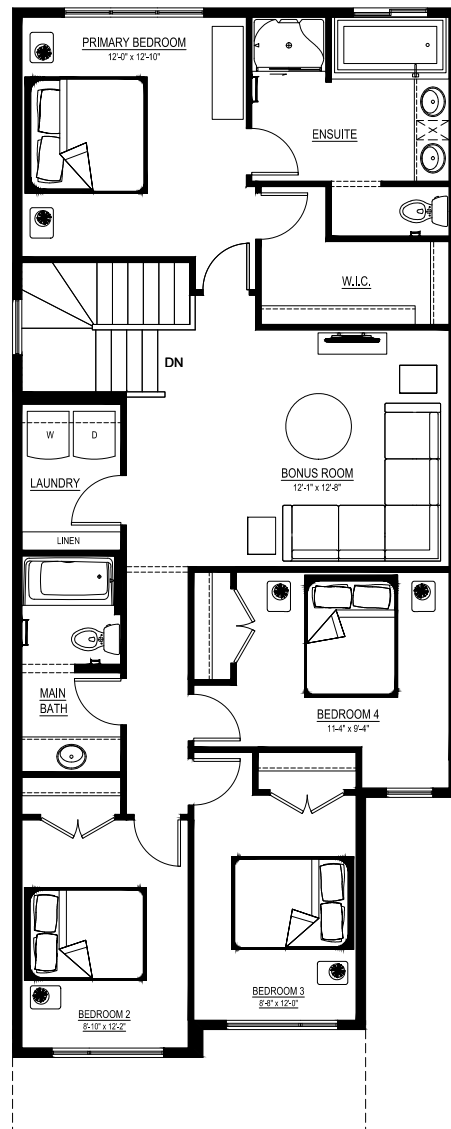
QUICK POSSESSION HOME IN EDMONTON 9106 ELVES LOOP NW

## Floor plans

MAIN FLOOR  
965 SQ.FT.



SECOND FLOOR  
1273 SQ.FT.



For more  
information.

Anabela daPonte-Cordeiro  
EDMONTON AREA MANAGER

780-756-8515  
EDMONTON@EXCELSHOMES.CA

EXCELSHOMES.CA

This floorplan represents one version of this home and measurements are approximate. The square footage, measurements and layout may vary based on the elevation and/or lot. All elevations shown are artist's concept only and will vary by community. The builder reserves the right to make modifications or substitutions should they be necessary. All plans, options, dimensions, specifications, materials and drawings are subject to change without notice. E.&O.E.