

Meet the Rosewood

QUICK POSSESSION HOME IN ALCES
311 22 STREET SW EDMONTON, ALBERTA



FRONT GARAGE
COLLECTION

2238 SQ.
FT.

4

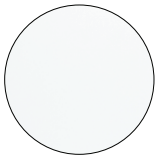
3



This home's interior palette is the following:



LVP:
Mikita



Upper Cabinets:
Cloud White



Lower Cabinets:
Fashionista



Backsplash:
Fawn Glossy



Quartz
Countertops:
Diavik



Carpet:
Coconut Brown



Paint:
Summit

This home features the following:

- Level 1 kitchen upgrade complete with crown moulding, island extension, 42" upper cabinets, and one pots and pans drawer
- Level 1 ensuite upgrade complete with a soaker tub, standing shower with tile surround, dual sinks and an additional bank of drawers
- Full bath on main floor
- Alternate main & upper floor layout
- Door to flex room
- Exterior side entry to basement

Standard features:

- BUILT GREEN® certified home
- Complete 6-piece ENERGY STAR® rated appliance package
- 1 1/4" quartz countertops throughout
- Luxury vinyl plank throughout entire main floor and second floor wet areas
- Full yard landscaping
- Please see your Area Manager for the complete list of standard features

You can purchase this home for:

\$

including home, lot and GST

Home availability:



For more information:



Sudip Punoria
ALCES AREA MANAGER

T: 780-709-8730
E: spunoria@excelhomes.ca

**EXCEL
HOMES**

..... Simplifying your journey home.

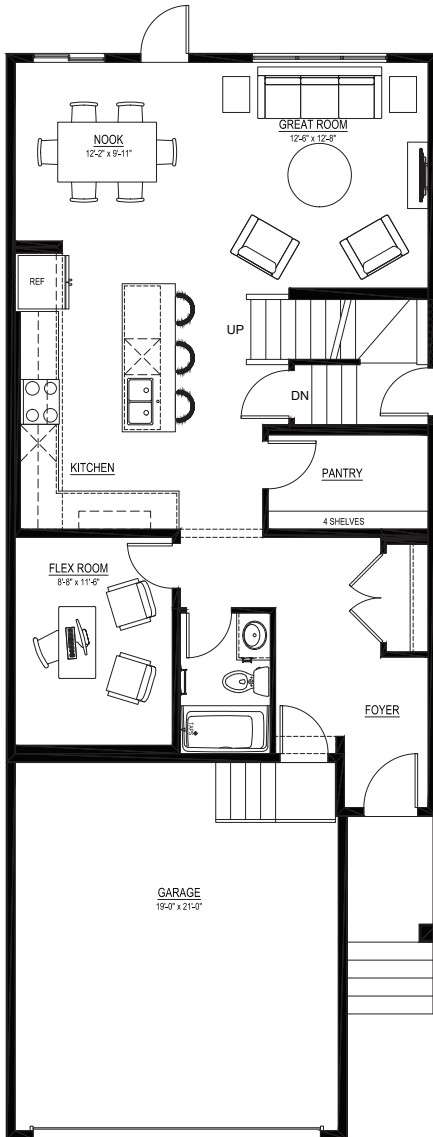
Meet the

Rosewood

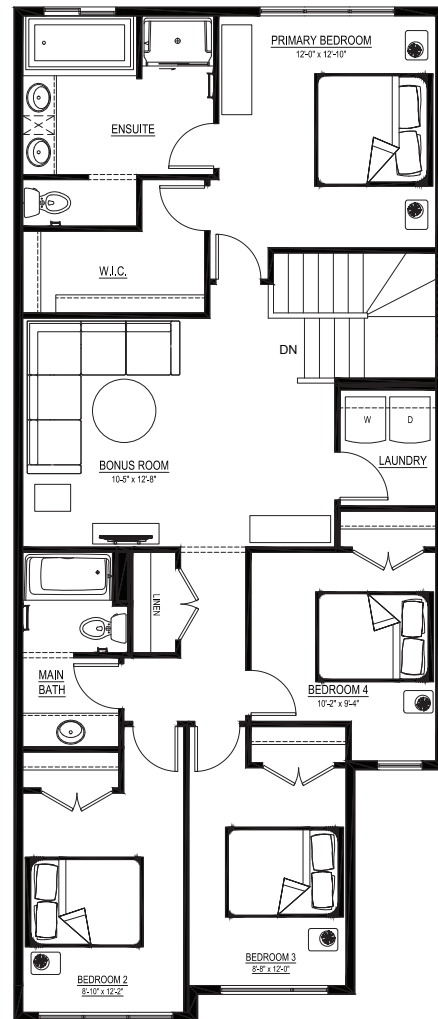
QUICK POSSESSION HOME IN ALCES 311 22 STREET SW

Floor plans

MAIN FLOOR
965 SQ.FT.



SECOND FLOOR
1273 SQ.FT.



For more
information.

Sudip Punoria
ALCES AREA MANAGER

780-709-8730
SPUNORIA@EXCELHOMES.CA

EXCELHOMES.CA

This floorplan represents one version of this home and measurements are approximate. The square footage, measurements and layout may vary based on the elevation and/or lot. All elevations shown are artist's concept only and will vary by community. The builder reserves the right to make modifications or substitutions should they be necessary. All plans, options, dimensions, specifications, materials and drawings are subject to change without notice. E.&O.E