

# Meet the Rosewood

QUICK POSSESSION HOME IN ALCES  
2268 4TH AVE NW EDMONTON, ALBERTA



FRONT GARAGE  
COLLECTION

2238 SQ.  
FT.

4

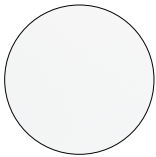
3



## This home's interior palette is the following:



LVP:  
Arctic



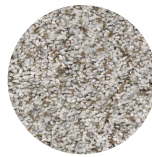
Cabinets:  
Cloud White



Backsplash:  
Eksa Island White



Quartz Countertops:  
Miami White



Carpet:  
Stone



Paint:  
Designer Grey

## This home features the following:

- Level 1 kitchen upgrade complete with crown moulding, island extension, 42" upper cabinets, and one pots and pans drawer
- Level 1 ensuite upgrade complete with a soaker tub, standing shower with tile surround, dual sinks and an additional bank of drawers
- Reverse layout
- Full bath on main floor
- Upgrade tubshower to shower on main floor bath
- Door to flex room
- 9' basement foundation height
- Exterior side entry to basement

## Standard features:

- BUILT GREEN® certified home
- Complete 6-piece ENERGY STAR® rated appliance package
- 1 1/4" quartz countertops throughout
- Luxury vinyl plank throughout entire main floor and second floor wet areas
- Full yard landscaping
- Please see your Area Manager for the complete list of standard features

## You can purchase this home for:

\$

including home, lot and GST

## Home availability:



## For more information:



**Sudip Punoria**  
ALCES AREA MANAGER

T: 780-709-8730  
E: [spunoria@excelhomes.ca](mailto:spunoria@excelhomes.ca)

**EXCEL  
HOMES**

..... Simplifying your journey home.

This floorplan represents one version of this home and measurements are approximate. The square footage, measurements and layout may vary based on the elevation and/or lot. All elevations shown are artist's concept only and will vary by community. The builder reserves the right to make modifications or substitutions should they be necessary. All plans, options, dimensions, specifications, materials and drawings are subject to change without notice. E.&O.E

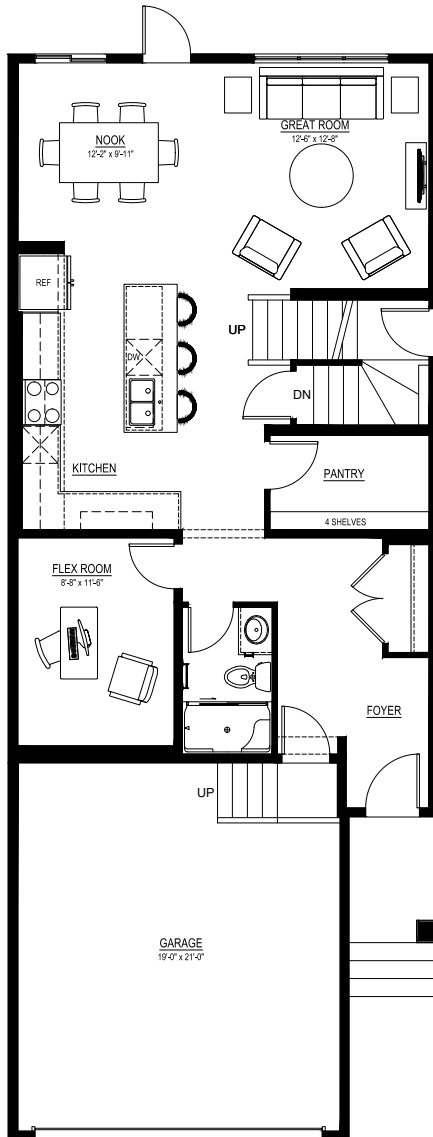
Meet the

# Roswood

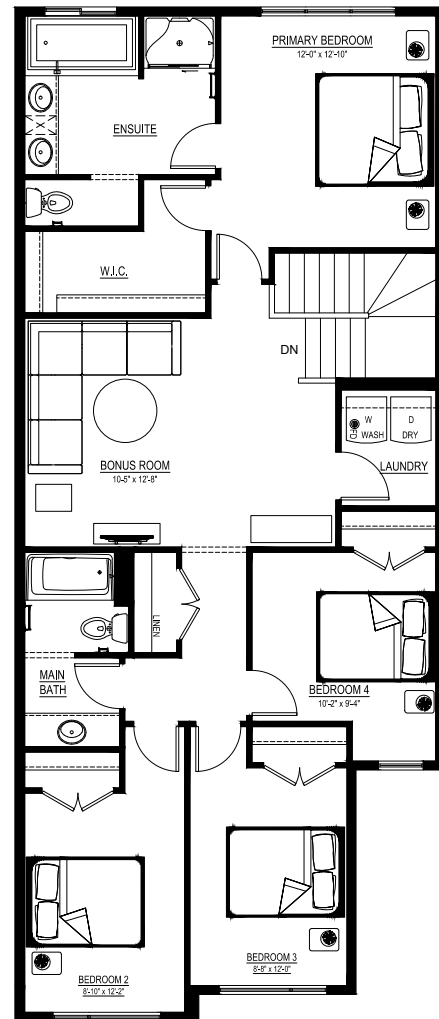
QUICK POSSESSION HOME IN ALCES 2268 4TH AVE NW

## Floor plans

MAIN FLOOR  
965 SQ.FT.



SECOND FLOOR  
1273 SQ.FT.



For more  
information.

**Sudip Punoria**  
ALCES AREA MANAGER

**780-709-8730**  
SPUNORIA@EXCELHOMES.CA

EXCELHOMES.CA

This floorplan represents one version of this home and measurements are approximate. The square footage, measurements and layout may vary based on the elevation and/or lot. All elevations shown are artist's concept only and will vary by community. The builder reserves the right to make modifications or substitutions should they be necessary. All plans, options, dimensions, specifications, materials and drawings are subject to change without notice. E.&O.E