

Meet the Rosewood

QUICK POSSESSION HOME IN ALCES
2260 4 AVENUE SW EDMONTON, ALBERTA



FRONT GARAGE
COLLECTION

2234 SQ.
FT.

4

3



This home's interior palette is the following:



LVP:
Glacier



Cabinets:
Free Spirit



Paint:
Summit



Backsplash:
White Matte



Quartz
Countertops:
Crystal Crescent



Carpet:
Dragon Grey

This home features the following:

- Level 1 kitchen upgrade complete with crown moulding, island extension, 42" upper cabinets, and one pots and pans drawer
- Level 1 ensuite upgrade complete with a soaker tub, standing shower with tile surround, dual sinks and an additional bank of drawers
- Level 1 matte black kitchen faucet
- Level 1 island pendant light
- Full bath on main floor
- Alternate main & upper floor layout
- Door to flex room
- Exterior side entry to basement

Standard features:

- BUILT GREEN® certified home
- Complete 6-piece ENERGY STAR® rated appliance package
- 1 1/4" quartz countertops throughout
- Luxury vinyl plank throughout entire main floor and second floor wet areas
- Full yard landscaping
- Please see your Area Manager for the complete list of standard features

You can purchase this home for:

\$

including home, lot and GST

Home availability:



For more information:



Sudip Punoria
ALCES AREA MANAGER

T: 780-709-8730
E: spunoria@excelhomes.ca

**EXCEL
HOMES**

..... Simplifying your journey home.

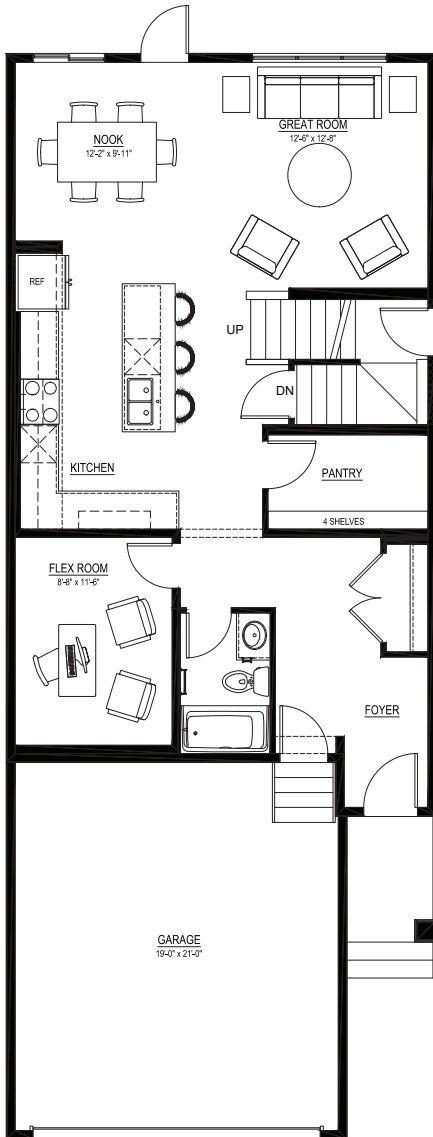
Meet the

Rosewood

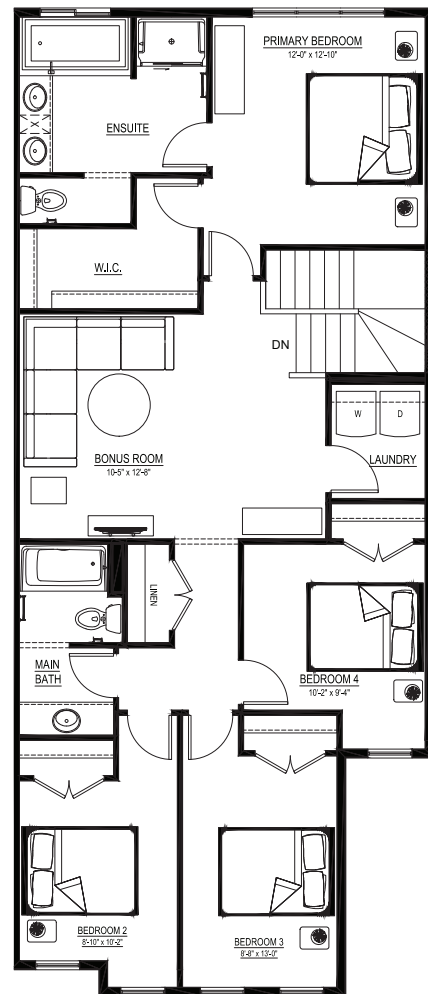
QUICK POSSESSION HOME IN ALCES 2260 4 AVENUE SW

Floor plans

MAIN FLOOR
965 SQ.FT.



SECOND FLOOR
1269 SQ.FT.



For more
information.

Sudip Punoria
ALCES AREA MANAGER

780-709-8730
SPUNORIA@EXCELHOMES.CA

EXCELHOMES.CA

This floorplan represents one version of this home and measurements are approximate. The square footage, measurements and layout may vary based on the elevation and/or lot. All elevations shown are artist's concept only and will vary by community. The builder reserves the right to make modifications or substitutions should they be necessary. All plans, options, dimensions, specifications, materials and drawings are subject to change without notice. E.&O.E