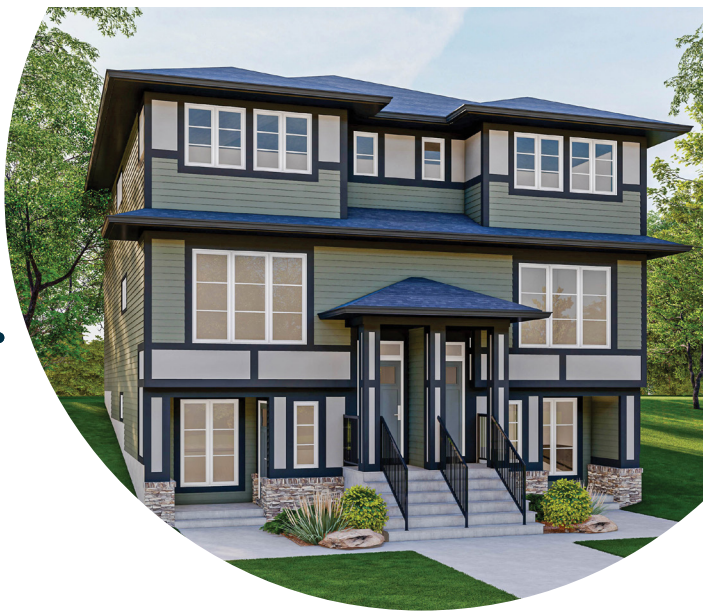


Meet the Rio



QUICK POSSESSION HOME IN CARRINGTON
410 CARRINGUE GROVE NW CALGARY, ALBERTA



DUPLEX
COLLECTION

1758 SQ.
FT.

4

3

This home's interior palette is the following:



LVP:
Miss Sunshine



Cabinets:
Free Spirit



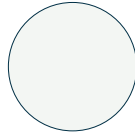
Backsplash:
Liquorice Matte



Countertops:
Polaire



Carpet:
Beach Lava



Paint:
Summit

This home features the following:

- Main floor bedroom
- Full bath on main floor
- Standard black plumbing package
- Anthracite silgranit undermount sink to kitchen
- Matte black standard pull-down faucet to kitchen and basement kitchen
- Dual sinks to ensuite
- Upgrade tubshower to shower in ensuite & main floor full bath
- Black metal spindled railing
- Black farmhouse chandelier to foyer and nook
- Black farmhouse pendant to kitchen island
- Black farmhouse vanity to ensuite, main bath & basement bath
- Level 1 matte black door hardware
- Additional potlights to kitchen, great room, bonus room, basement suite kitchen and rec room
- Vaulted bonus room ceiling
- Develeoped basement suite (one bedroom)
- Rear pressure treated landing
- Gasline to BBQ

Standard features:

- **BUILT GREEN®** certified home
- ENERGY STAR® rated appliances
- 1 1/4" countertops throughout
- Triple pane windows
- Tankless hot water
- Soft close cabinets & drawers
- Luxury vinyl plank throughout entire main floor and second floor wet areas
- Please see your Area Manager for the complete list of standard features

You can purchase this home for:

\$

including home, lot and GST

Home availability:



For more information:



Tyler Scott
CARRINGTON AREA MANAGER

T: 403-371-4138
E: carrington@excelhomes.ca



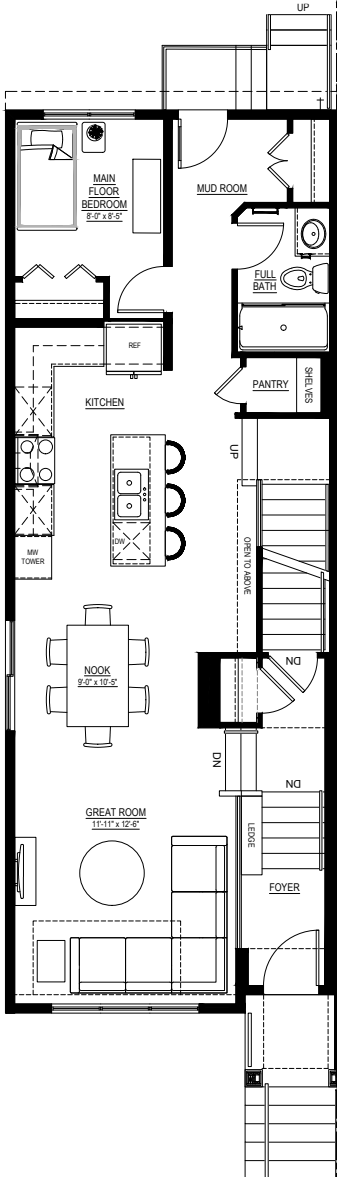
Simplifying your journey home.

Meet the Rio

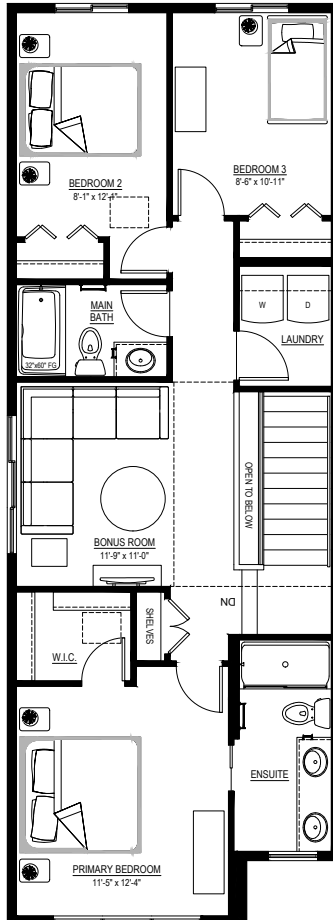
QUICK POSSESSION HOME IN CARRINGTON 410 CARRINGUE GROVE NW

Floor plans

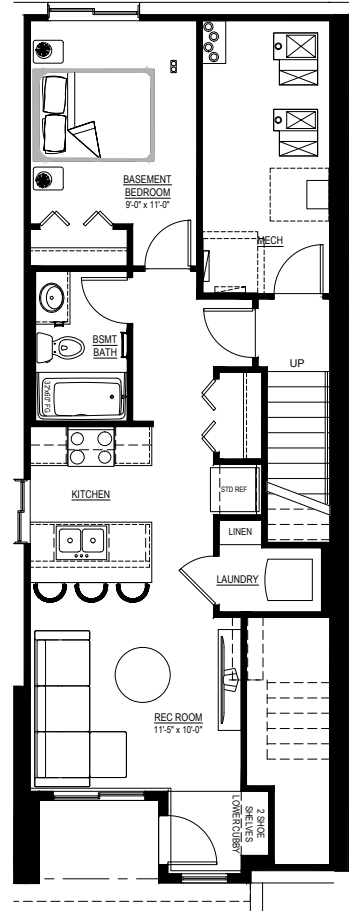
• MAIN FLOOR
• 876 SQ.FT.



• SECOND FLOOR
• 882 SQ.FT.



• BASEMENT SUITE
• 574 SQ.FT.



For more information.

Tyler Scott
CARRINGTON AREA MANAGER

403-371-4138
CARRINGTON@EXCELHOMES.CA

EXCELHOMES.CA