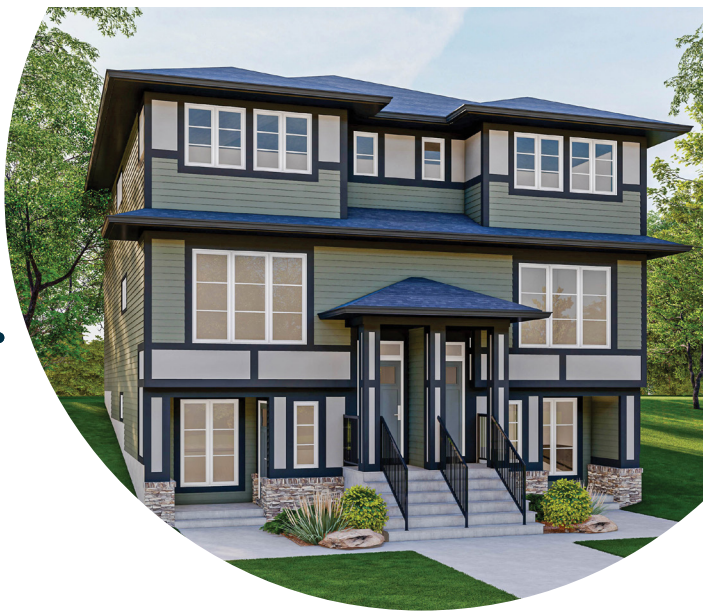


# Meet the Rio



QUICK POSSESSION HOME IN CARRINGTON  
410 CARRINGUE GROVE NW CALGARY, ALBERTA



DUPLEX  
COLLECTION

1758 SQ.  
FT.



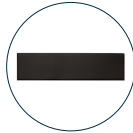
## This home's interior palette is the following:



LVP:  
Miss Sunshine



Cabinets:  
Free Spirit



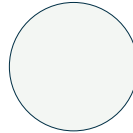
Backsplash:  
Liquorice Matte



Countertops:  
Polaire



Carpet:  
Beach Lava



Paint:  
Summit

## This home features the following:

- Main floor bedroom
- Full bath on main floor
- Standard black plumbing package
- Anthracite silgranit undermount sink to kitchen
- Matte black standard pull-down faucet to kitchen and basement kitchen
- Dual sinks to ensuite
- Upgrade tubshower to shower in ensuite & main floor full bath
- Black metal spindled railing
- Black farmhouse chandelier to foyer and nook
- Black farmhouse pendant to kitchen island
- Black farmhouse vanity to ensuite, main bath & basement bath
- Level 1 matte black door hardware
- Additional potlights to kitchen, great room, bonus room, basement suite kitchen and rec room
- Vaulted bonus room ceiling
- Developed basement suite (one bedroom)
- Rear pressure treated landing
- Gasline to BBQ

## Standard features:

- **BUILT GREEN®** certified home
- ENERGY STAR® rated appliances
- 1 1/4" countertops throughout
- Triple pane windows
- Tankless hot water
- Soft close cabinets & drawers
- Luxury vinyl plank throughout entire main floor and second floor wet areas
- Please see your Area Manager for the complete list of standard features

## You can purchase this home for:

\$

including home, lot and GST

## Home availability:



## For more information:



**Tyler Scott**  
CARRINGTON AREA MANAGER

T: 403-371-4138  
E: carrington@excelhomes.ca

**EXCEL  
HOMES**

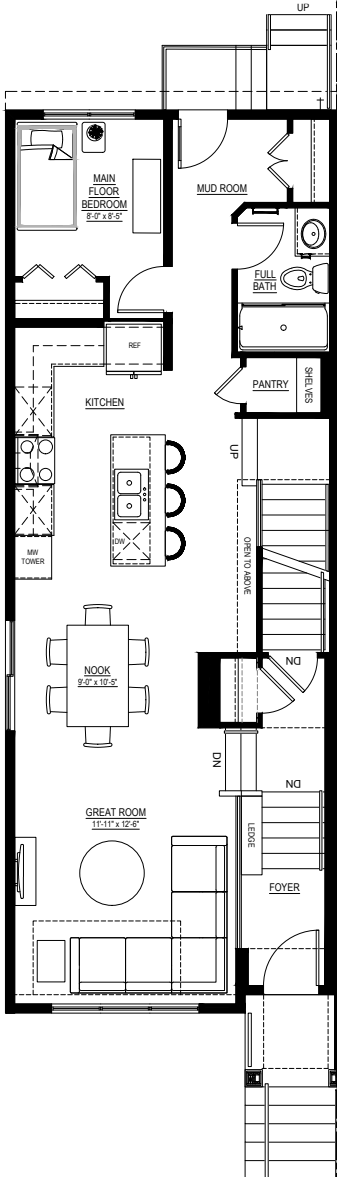
Simplifying your journey home.

# Meet the Rio

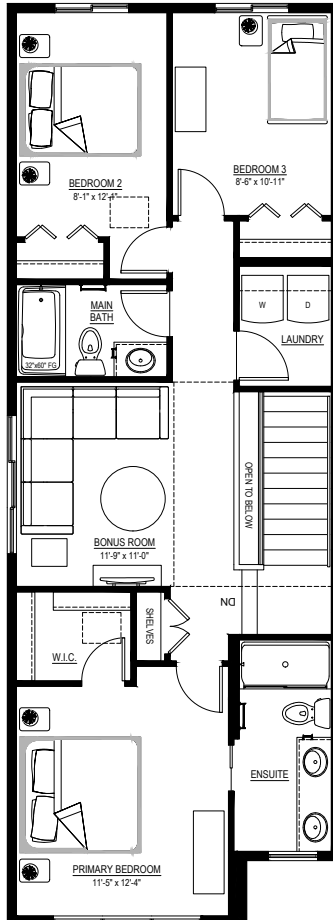
QUICK POSSESSION HOME IN CARRINGTON 410 CARRINGUE GROVE NW

## Floor plans

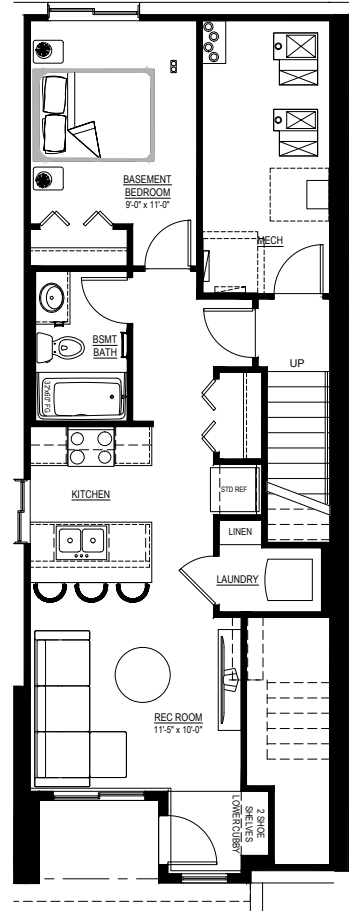
• MAIN FLOOR  
• 876 SQ.FT.



• SECOND FLOOR  
• 882 SQ.FT.



• BASEMENT SUITE  
• 574 SQ.FT.



For more information.

**Tyler Scott**  
CARRINGTON AREA MANAGER

**403-371-4138**  
CARRINGTON@EXCELHOMES.CA

EXCELHOMES.CA

This floorplan represents one version of this home and measurements are approximate. The square footage, measurements and layout may vary based on the elevation and/or lot. All elevations shown are artist's concept only and will vary by community. The builder reserves the right to make modifications or substitutions should they be necessary. All plans, options, dimensions, specifications, materials and drawings are subject to change without notice. E.&O.E