

Meet the Rio

QUICK POSSESSION HOME IN CARRINGTON
406 CARRINGUE GROVE NW CALGARY, ALBERTA

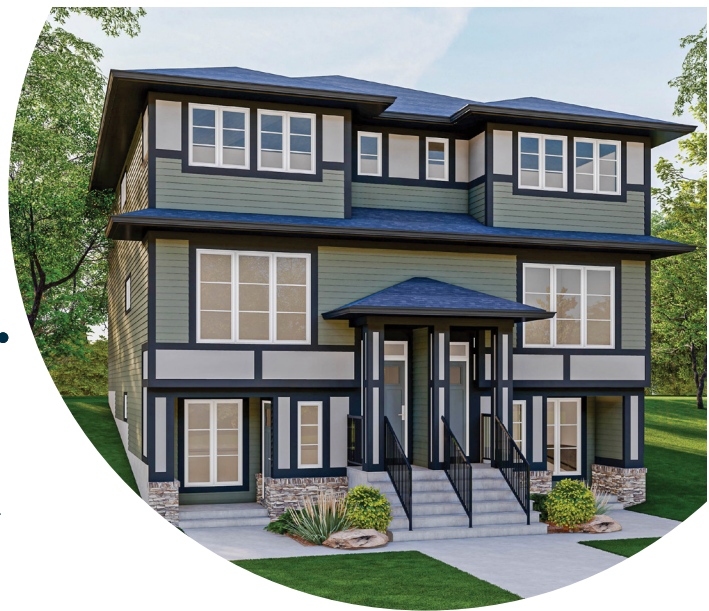


DUPLEX
COLLECTION

1758 SQ.
FT.

4

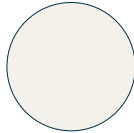
3



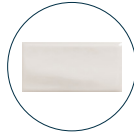
This home's interior palette is the following:



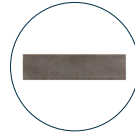
LVP:
Myster Mile



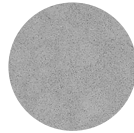
Cabinets:
Fresh Linen



Backsplash:
Mist Glossy



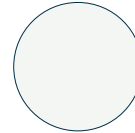
Basement
Backsplash:
Noho Taupe



Countertops:
Thunder Grey



Carpet:
Ocean Mist



Paint:
Summit

This home features the following:

- Main floor bedroom
- Full bath on main floor
- Level 2 fridge to kitchen
- Anthracite silgranit undermount sink to kitchen
- Matte black standard pull-down faucet to kitchen and basement kitchen
- Dual sinks to ensuite
- Upgrade tubshower to shower in main floor bath & ensuite
- Black & gold lighting package
- Standard black plumbing package
- Wood spindled railing
- Level 1 matte black door hardware
- Additional potlights to kitchen, great room, bonus room, basement suite kitchen and rec room
- Vaulted bonus room ceiling
- Develeoped basement suite (one bedroom)
- Standard washer & dryer to basement suite
- Rear pressure treated landing
- Gasline to BBQ

Standard features:

- BUILT GREEN® certified home
- ENERGY STAR® rated appliances
- 1 1/4" countertops throughout
- Tankless hot water
- Soft close cabinets & drawers
- Luxury vinyl plank throughout entire main floor and second floor wet areas
- Please see your Area Manager for the complete list of standard features

You can purchase this home for:



including home, lot and GST

Home availability:



For more information:



Tyler Scott
CARRINGTON AREA MANAGER

T: 403-371-4138
E: carrington@excelhomes.ca



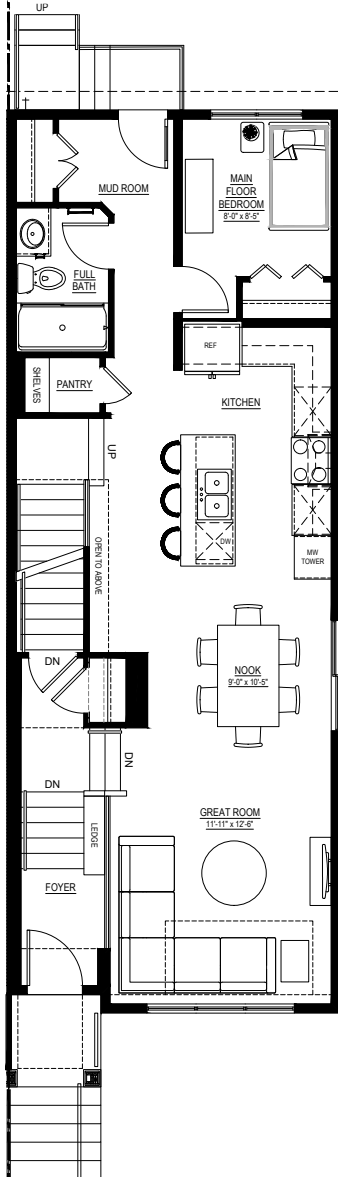
Simplifying your journey home.

Meet the Rio

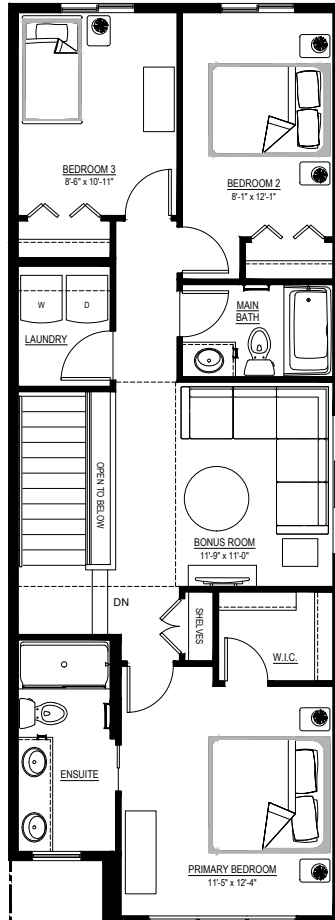
QUICK POSSESSION HOME IN CARRINGTON 406 CARRINGUE GROVE NW

Floor plans

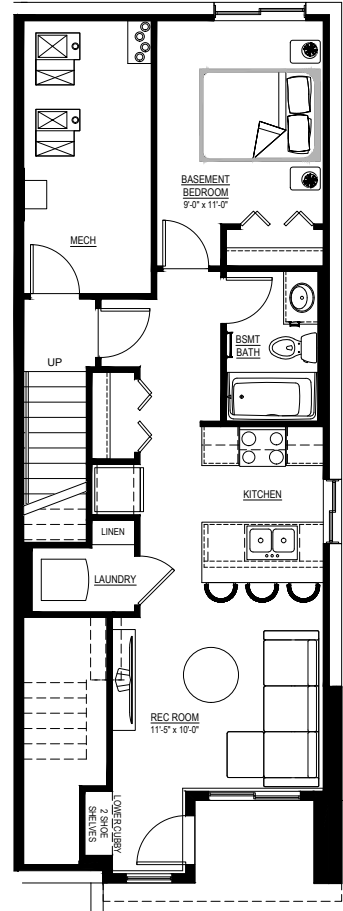
• MAIN FLOOR
• 876 SQ.FT.



• SECOND FLOOR
• 882 SQ.FT.



• BASEMENT SUITE
• 574 SQ.FT.



For more information.

Tyler Scott
CARRINGTON AREA MANAGER

403-371-4138
CARRINGTON@EXCELHOMES.CA

EXCELHOMES.CA