

# Meet the Meadowview



QUICK POSSESSION HOME IN THE ORCHARDS  
2362 MUCKLEPLUM WAY SW EDMONTON, ALBERTA



DUPLEX COLLECTION

1682 SQ. FT.

3

2.5

## This home's interior palette is the following:



LVP: Arctic



Cabinets: Free Spirit



Backsplash: Eksa Atlas White



Countertops: Crystal Crescent



Carpet: Comet Grey



Paint: Designer Grey

## This home features the following:

- Level 1 kitchen
- Upgrade tubshower to shower in ensuite
- Dual sinks to ensuite
- Exterior side entry to basement
- Upgraded black finish island pendants
- Upgraded black finish nook chandelier

## Standard features:

- BUILT GREEN® certified home
- Complete 6-piece ENERGY STAR® rated appliance package
- 1 1/4" quartz countertops throughout
- Luxury vinyl plank throughout entire main floor and second floor wet areas
- Full yard landscaping
- Please see your Area Manager for the complete list of standard features

## You can purchase this home for:

\$

including home, lot and GST

## Home availability:



## For more information:



**Amber Amritwar**  
THE ORCHARDS

T: 780-977-2739

E: theorchards@excelhomes.ca



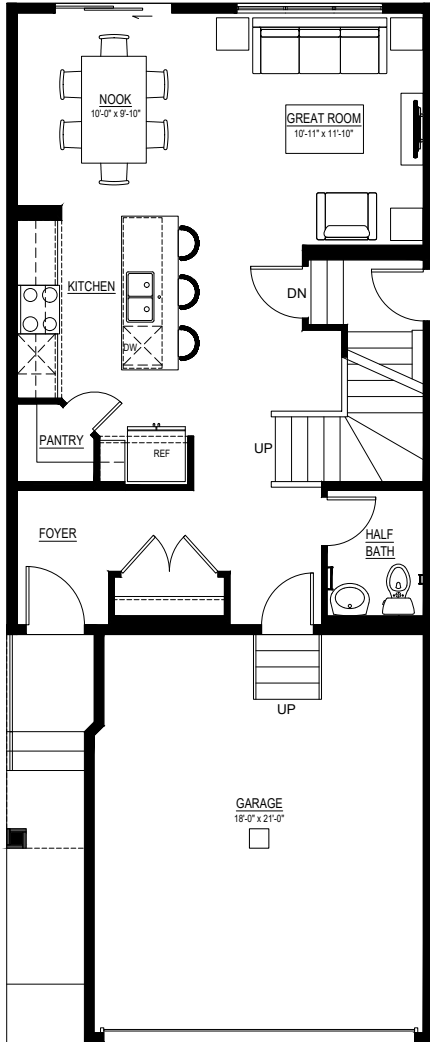
Simplifying your journey home.

# Meet the Meadowview

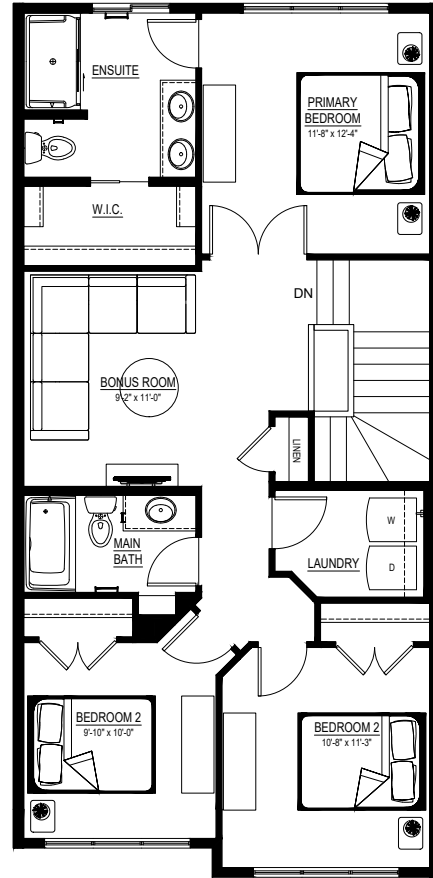
QUICK POSSESSION HOME IN THE ORCHARDS 2362 MUCKLEPLUM WAY SW

## Floor plans

MAIN FLOOR  
715 SQ.FT.



SECOND FLOOR  
967 SQ.FT.



For more information.

Amber Amritwar  
THE ORCHARDS AREA MANAGER

780-977-2739  
THEORCHARDS@EXCELHOMES.CA

EXCELHOMES.CA

This floorplan represents one version of this home and measurements are approximate. The square footage, measurements and layout may vary based on the elevation and/or lot. All elevations shown are artist's concept only and will vary by community. The builder reserves the right to make modifications or substitutions should they be necessary. All plans, options, dimensions, specifications, materials and drawings are subject to change without notice. E.&O.E