

# Meet the Nest

QUICK POSSESSION HOME IN ALCES  
710 22ND STREET SW EDMONTON, ALBERTA



DUPLEX  
COLLECTION

1576 SQ.  
FT.

3

2.5



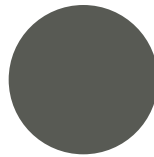
## This home's interior palette is the following:



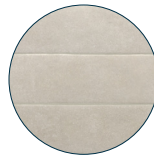
LVP:  
Nature



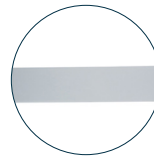
Kitchen Upper &  
Lower Cabinets:  
Carte Blanche



Kitchen Island &  
Bath Cabinets:  
Cashmere Dusk



Kitchen & Bath  
Backsplash:  
Stage Taupe



Bathroom  
Tub Surround  
Backsplash:  
Eksa Island White



Countertops:  
Whistler Gold



Carpet:  
Democracy



Paint:  
Summit

## This home features the following:

- Level 1 kitchen upgrade complete with crown moulding, island extension, 42" upper cabinets, and one pots and pans drawer
- Level 1 matte black pendant to kitchen island
- Level 1 matte black small chandelier to nook
- Level 1 matte black flush mount to great room
- Level 1 matte black kitchen faucet
- Level 1 black NuGranite sink to kitchen
- Level 1 matte black interior door handles
- Exterior side entry

## Standard features:

- BUILT GREEN® certified home
- Complete 6-piece ENERGY STAR® rated appliance package
- 1 1/4" quartz countertops throughout
- Luxury vinyl plank throughout entire main floor and second floor wet areas
- Full yard landscaping
- Please see your Area Manager for the complete list of standard features

## You can purchase this home for:

\$

including home, lot and GST

## Home availability:



## For more information:



**Sudip Punoria**  
ALCES AREA MANAGER

T: 780-709-8730  
E: [spunoria@excelhomes.ca](mailto:spunoria@excelhomes.ca)



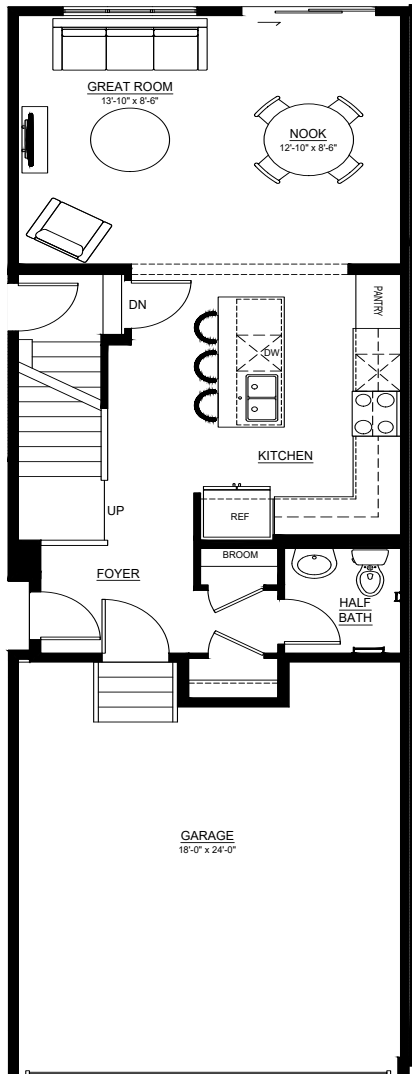
..... Simplifying your journey home.

# Meet the Nest

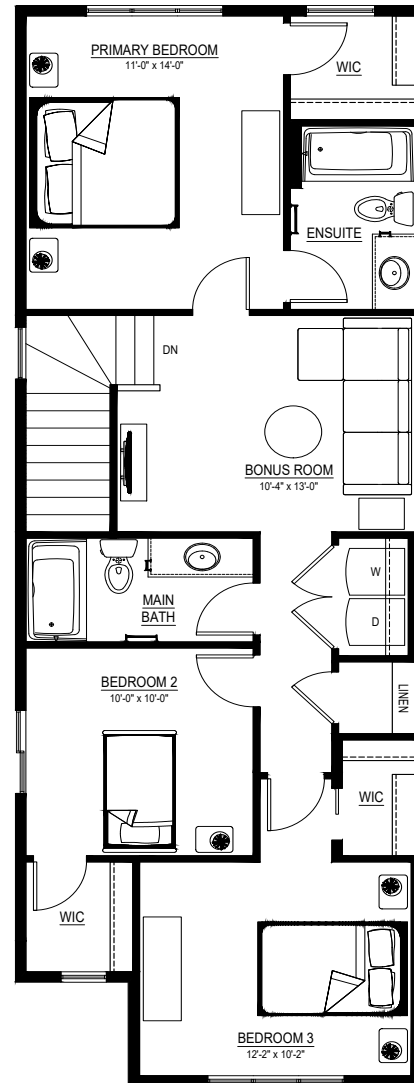
QUICK POSSESSION HOME IN ALCES 708 22ND STREET SW

## Floor plans

MAIN FLOOR  
665 SQ.FT.



SECOND FLOOR  
911 SQ.FT.



For more information.

**Sudip Punoria**  
ALCES AREA MANAGER

**780-709-8730**  
SPUNORIA@EXCELHOMES.CA

EXCELHOMES.CA