

Meet the Nest

QUICK POSSESSION HOME IN ALCES
708 22ND STREET SW EDMONTON, ALBERTA



DUPLEX
COLLECTION

1576 SQ.
FT.

3

2.5



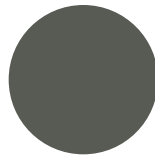
This home's interior palette is the following:



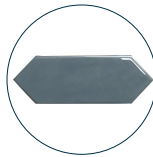
LVP:
Glacier



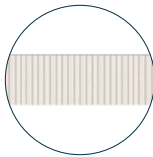
Kitchen Uppers &
Bath Cabinets:
Gardenia



Kitchen Lovers &
Island Cabinets:
Cashmere Dusk



Kitchen
Backsplash:
Picket Denim



Bathroom
Backsplash:
Murano White



Countertops:
Miami Vena



Carpet:
Mountain Rocks



Paint:
Crystal

This home features the following:

- Level 1 kitchen upgrade complete with crown moulding, island extension, 42" upper cabinets, and one pots and pans drawer
- Level 1 matte black pendant to kitchen island
- Level 1 matte black small chandelier to nook
- Level 1 matte black kitchen faucet
- Level 1 black NuGranite sink to kitchen
- Level 1 matte black interior door handles
- Exterior side entry

Standard features:

- BUILT GREEN® certified home
- Complete 6-piece ENERGY STAR® rated appliance package
- 1/4" quartz countertops throughout
- Luxury vinyl plank throughout entire main floor and second floor wet areas
- Full yard landscaping
- Please see your Area Manager for the complete list of standard features

You can purchase this home for:

\$

including home, lot and GST

Home availability:



For more information:



Sudip Punoria
ALCES AREA MANAGER

T: 780-709-8730
E: spunoria@excelhomes.ca



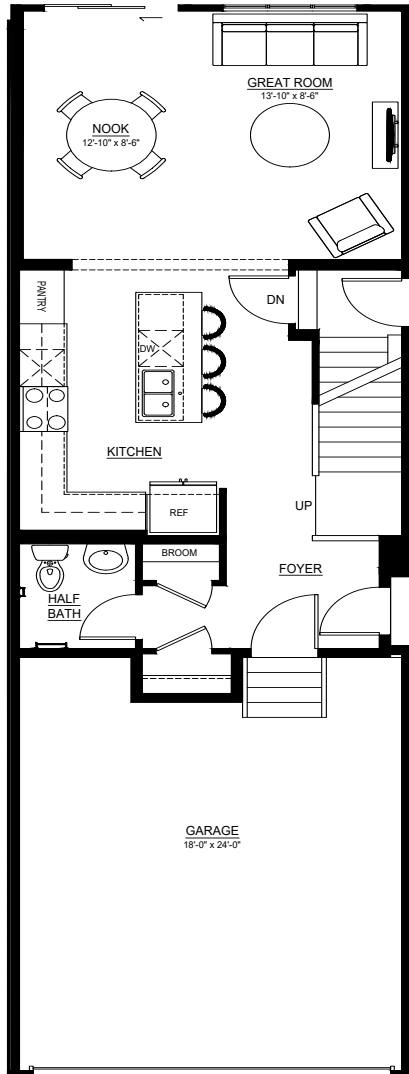
Simplifying your journey home.

Meet the Nest

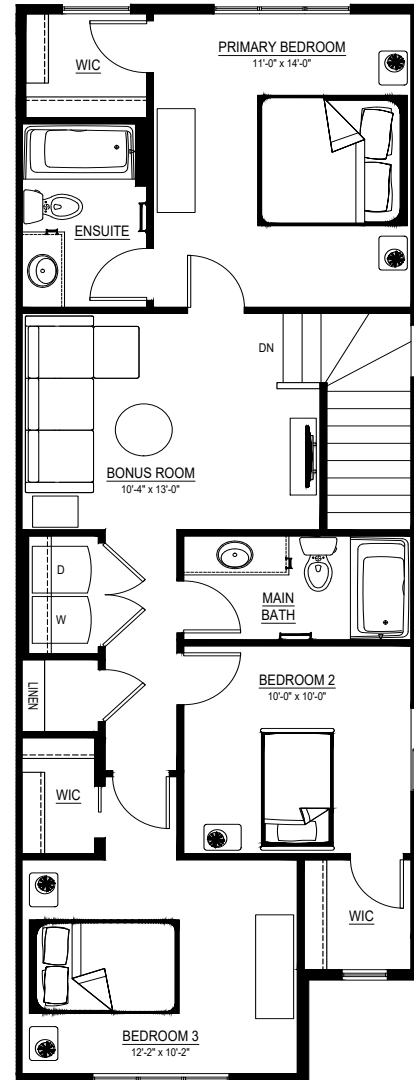
QUICK POSSESSION HOME IN ALCES 708 22ND STREET SW

Floor plans

MAIN FLOOR
665 SQ.FT.



SECOND FLOOR
911 SQ.FT.



For more information.

Sudip Punoria
ALCES AREA MANAGER

780-709-8730
SPUNORIA@EXCELHOMES.CA

EXCELHOMES.CA