

# Meet the Meadowview

QUICK POSSESSION HOME IN VITA CRYSTALLINA  
18011 73 STREET NW EDMONTON, ALBERTA



FRONT GARAGE  
COLLECTION

1682 SQ.  
FT.

3

2.5



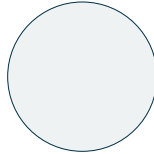
## This home's interior palette is the following:



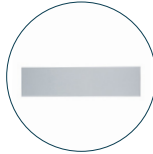
LVP:  
Etiquette



Cabinets:  
Fashionista



Kitchen Upper  
Cabinets:  
Glacier White



Backsplash:  
Eksa Island White



Countertops:  
Halcyon



Carpet:  
Cabriolet Brown



Paint:  
Summit

## This home features the following:

- Level 1 kitchen upgrade complete with crown moulding, island extension, 42" upper cabinets, and one pots and pans drawer
- Level 1 pendant to kitchen island
- Small chandelier to nook
- Exterior side entry to basement

## Standard features:

- BUILT GREEN® certified home
- Stainless steel appliances
- Thermally fused laminate cabinets
- Luxury vinyl plank throughout entire main floor and second floor wet areas
- Please see your Area Manager for the complete list of standard features

## You can purchase this home for:

\$

including home, lot and GST

## Home availability:



## For more information:



**Khush Sandhu**  
VITA CRYSTALLINA AREA MANAGER

T: 780-718-4869

E: vitacrystallina@excelhomes.ca



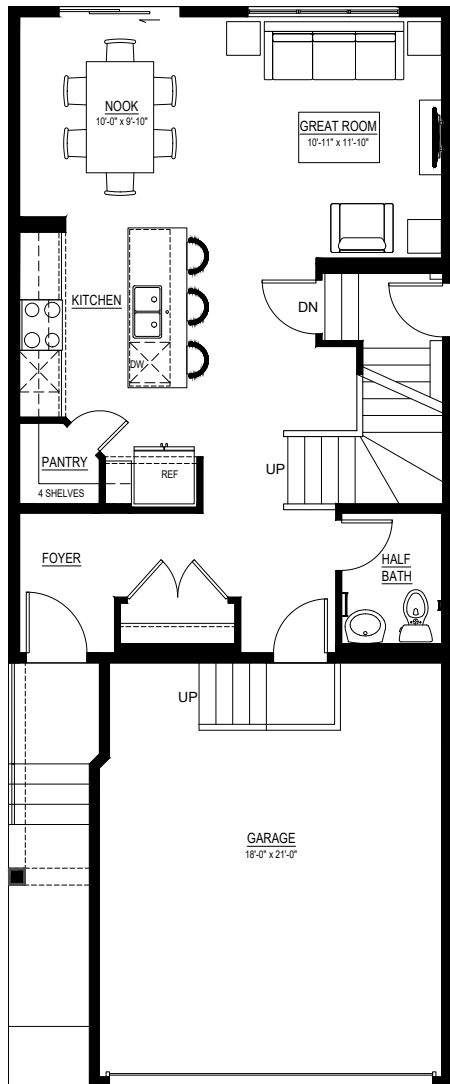
Simplifying your journey home.

# Meet the Meadowview

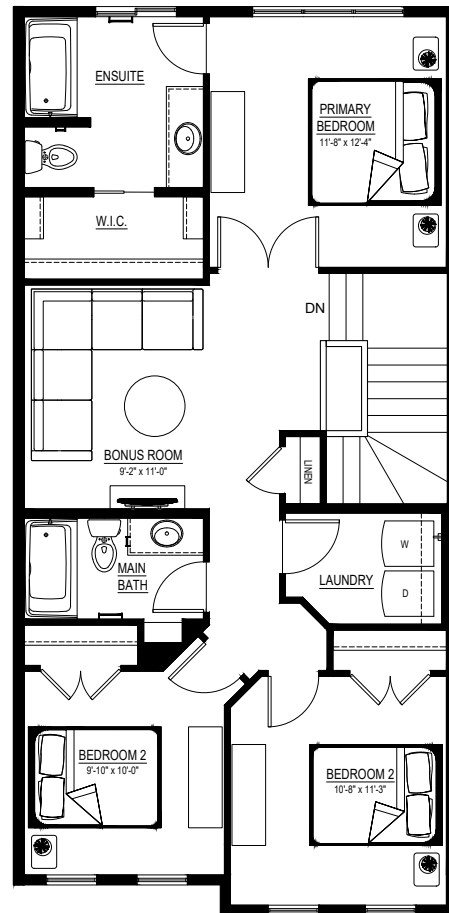
QUICK POSSESSION HOME IN VITA CRYSTALLINA 18011 73 STREET NW

## Floor plans

MAIN FLOOR  
715 SQ.FT.



SECOND FLOOR  
967 SQ.FT.



For more information.

**Khush Sandhu**  
VITA CRYSTALLINA AREA MANAGER

**780-718-4869**  
VITACRYSTALLINA@EXCELHOMES.CA

[EXCELHOMES.CA](https://www.excelhomes.ca)

This floorplan represents one version of this home and measurements are approximate. The square footage, measurements and layout may vary based on the elevation and/or lot. All elevations shown are artist's concept only and will vary by community. The builder reserves the right to make modifications or substitutions should they be necessary. All plans, options, dimensions, specifications, materials and drawings are subject to change without notice. E.&O.E