

# Meet the Lotus

QUICK POSSESSION HOME IN SETON RIDGE  
125 SETONVISTA GATE SE CALGARY, ALBERTA



DUPLEX  
COLLECTION

1753 SQ.  
FT.

3

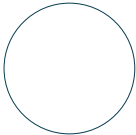
2.5



## This home's interior palette is the following:



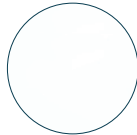
LVP:  
Labyrinth



Cabinets:  
Cotton Mist



Kitchen Island  
Cabinets:  
Cashmere Dusk



Kitchen,  
Backsplash:  
Arctic White



Ensuite, Bath  
Basement  
Backsplash:  
Divine Marble



Countertops:  
Bright White



Carpet:  
August Grove



Paint:  
Designer Grey

## This home features the following:

- Level 2 kitchen
- Level 2 fridge
- Level 2 matte black door hardware
- Full-height electric fireplace
- Level 1 black pull-down faucet to kitchen
- Coal black silgranit dual undermount sink to kitchen
- Black farmhouse lighting package
- Additional potlights to kitchen, great room & bonus room
- Black metal spindled railing
- Vaulted bonus room ceiling
- Upgrade tubshower to shower in ensuite
- Bank of three drawers to ensuite
- Dual sinks to ensuite
- Exterior side entry to basement
- Rear pressure treated deck
- Gasline to BBQ
- Developed basement suite (two bedroom)

## Standard features:

- BUILT GREEN® certified home
- Stainless steel appliances
- Thermally fused laminate cabinets
- Luxury vinyl plank throughout entire main floor and second floor wet areas
- Please see your Area Manager for the complete list of standard features

## You can purchase this home for:

\$

including home, lot and GST

## Home availability:



## For more information:



**Michelle Walker**  
SETON RIDGE AREA MANAGER

T: 368-889-7675  
E: [setonridge@excelhomes.ca](mailto:setonridge@excelhomes.ca)

**EXCEL  
HOMES**

..... Simplifying your journey home.

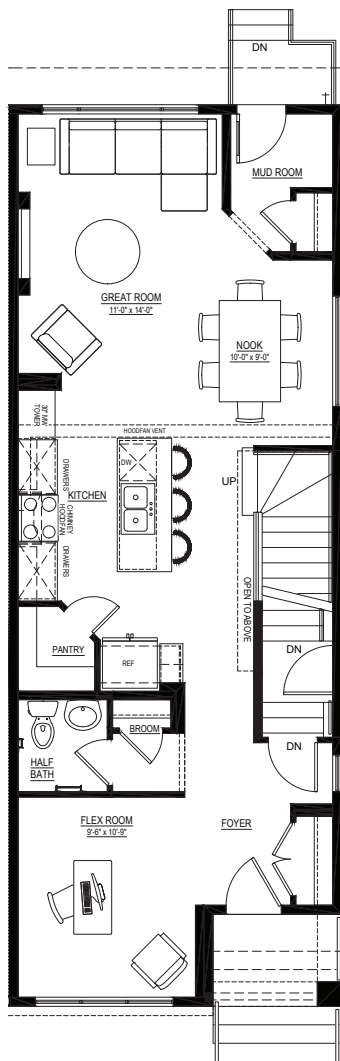
This floorplan represents one version of this home and measurements are approximate. The square footage, measurements and layout may vary based on the elevation and/or lot. All elevations shown are artist's concept only and will vary by community. The builder reserves the right to make modifications or substitutions should they be necessary. All plans, options, dimensions, specifications, materials and drawings are subject to change without notice. E.&O.E

# Meet the Lotus

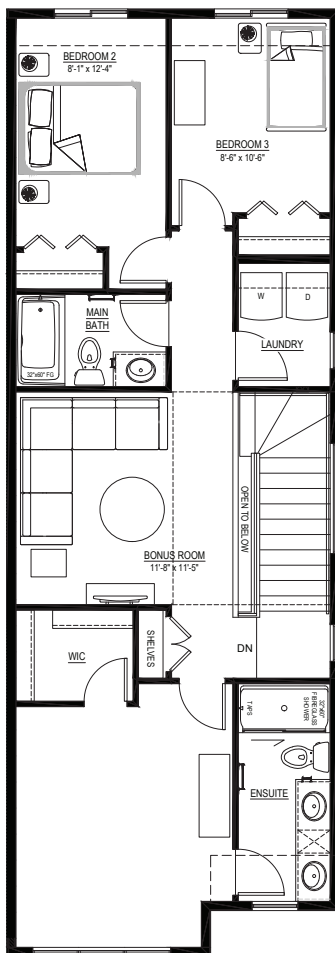
QUICK POSSESSION HOME IN SETON RIDGE 125 SETONVISTA GATE SE

## Floor plans

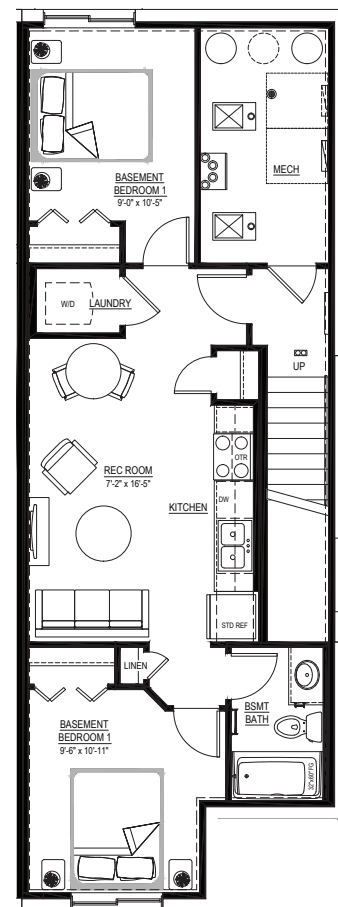
MAIN FLOOR  
847 SQ.FT.



SECOND FLOOR  
906 SQ.FT.



BASEMENT SUITE  
638 SQ.FT.



For more  
information.

**Michelle Walker**  
SETON RIDGE AREA MANAGER

**368-889-7675**  
SETONRIDGE@EXCELHOMES.CA

EXCELHOMES.CA

This floorplan represents one version of this home and measurements are approximate. The square footage, measurements and layout may vary based on the elevation and/or lot. All elevations shown are artist's concept only and will vary by community. The builder reserves the right to make modifications or substitutions should they be necessary. All plans, options, dimensions, specifications, materials and drawings are subject to change without notice. E.&O.E