

Meet the Lakeside



QUICK POSSESSION HOME IN EDMONTON
8945 ELVES LOOP NW EDMONTON, ALBERTA

 FRONT GARAGE COLLECTION

1945 SQ. FT.

4 

3 

This home's interior palette is the following:



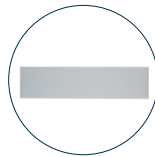
LVP: Bourque



Kitchen Cabinets: Gardenia



Kitchen Island and Bath Cabinets: Chicory



Backsplash: Eksa Island White



Countertops: Kintara Drift



Carpet: Democracy



Paint: Summit

This home features the following:

- Level 1 kitchen
- Level 1 ensuite
- Main floor bedroom
- Main floor full bathroom
- Exterior side entry to basement
- Level 1 black finish chandelier to stairwell
- Level 1 black finish island pendants
- Level 1 black finish chandelier to nook
- Level 1 black finish door hardware

Standard features:

- BUILT GREEN® certified home
- Complete 6-piece ENERGY STAR® rated appliance package
- 1 1/4" quartz countertops throughout
- Luxury vinyl plank throughout entire main floor and second floor wet areas
- Full yard landscaping
- Please see your Area Manager for the complete list of standard features

You can purchase this home for:

\$

including home, lot and GST

Home availability:



For more information:



Anabela daPonte-Cordeiro
EDGEMONT AREA MANAGER

T: 780-278-9143

E: edgemont@excelhomes.ca

EXCEL HOMES

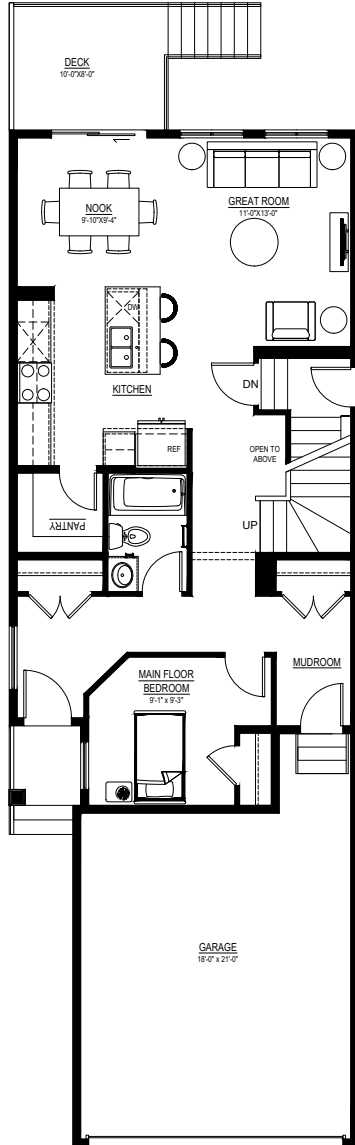
Simplifying your journey home.

Meet the Lakeside

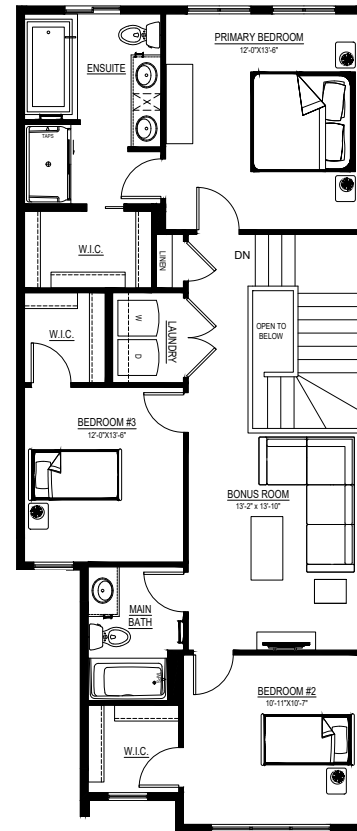
QUICK POSSESSION HOME IN THE EDMONTON 8945 ELVES LOOP NW

Floor plans

MAIN FLOOR
896 SQ.FT.



SECOND FLOOR
1049 SQ.FT.



For more information.

Anabela daPonte-Cordeiro
EDMONTON AREA MANAGER

780-278-9143
edgemont@excelhomes.ca

EXCELHOMES.CA

This floorplan represents one version of this home and measurements are approximate. The square footage, measurements and layout may vary based on the elevation and/or lot. All elevations shown are artist's concept only and will vary by community. The builder reserves the right to make modifications or substitutions should they be necessary. All plans, options, dimensions, specifications, materials and drawings are subject to change without notice. E.&O.E