

# Meet the Lakeview

QUICK POSSESSION HOME IN ALCES  
512 22 STREET SW EDMONTON, ALBERTA



FRONT GARAGE  
COLLECTION

1945 SQ.  
FT.

4

3



## This home's interior palette is the following:



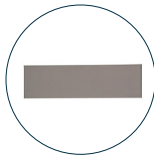
LVP:  
Sittler



Cabinets:  
Free Spirit



Kitchen Island  
Cabinets:  
First Class



Backsplash:  
Eksa Island Light  
Grey



Countertops:  
Moon Rock



Carpet:  
Legionary Grey



Paint:  
Crystal

## This home features the following:

- Level 1 kitchen upgrade complete with crown moulding, island extension, 42" upper cabinets, and one pots and pans drawer
- Main floor bedroom
- Full bath on main floor
- level 2 matte black faucet to kitchen
- Exterior side entry

## Standard features:

- BUILT GREEN® certified home
- Complete 6-piece ENERGY STAR® rated appliance package
- 1/4" quartz countertops throughout
- Luxury vinyl plank throughout entire main floor and second floor wet areas
- Full yard landscaping
- Please see your Area Manager for the complete list of standard features

## You can purchase this home for:

\$

including home, lot and GST

## Home availability:



## For more information:



**Sudip Punoria**  
ALCES AREA MANAGER

T: 780-709-8730  
E: [spunoria@excelhomes.ca](mailto:spunoria@excelhomes.ca)



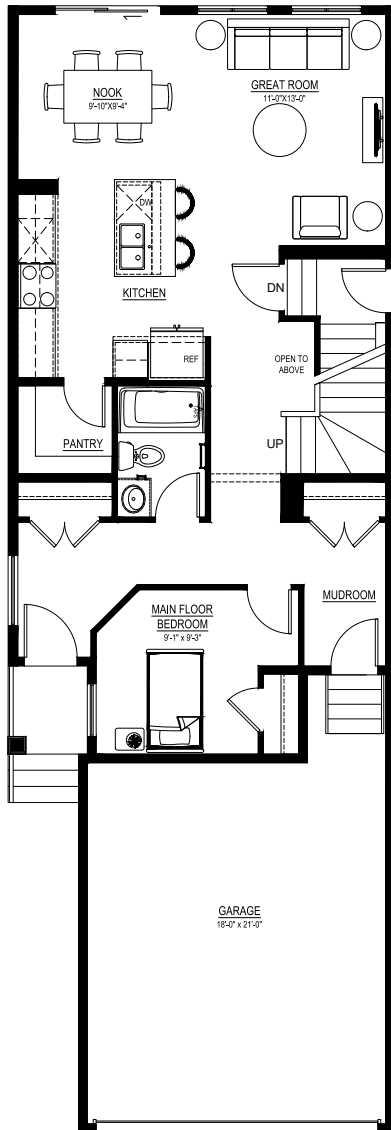
Simplifying your journey home.

# Meet the Lakeview

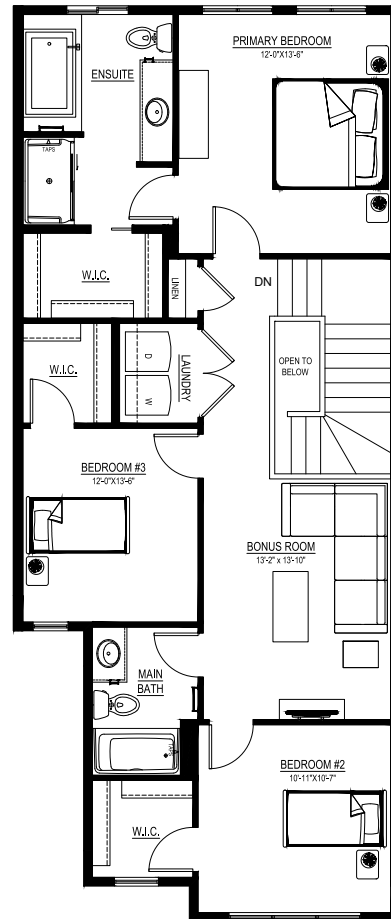
QUICK POSSESSION HOME IN ALCES 512 22 STREET SW

## Floor plans

MAIN FLOOR  
896 SQ.FT.



SECOND FLOOR  
1049 SQ.FT.



For more information.

**Sudip Punoria**  
ALCES AREA MANAGER

**780-709-8730**  
SPUNORIA@EXCELHOMES.CA

EXCELHOMES.CA