

Meet the Kensington

QUICK POSSESSION HOME IN ALCES
2264 4TH AVE NW EDMONTON, ALBERTA



FRONT GARAGE
COLLECTION

2205 SQ.
FT.

5

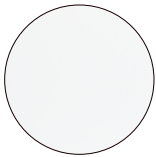
3



This home's interior palette is the following:



LVP:
Glacier



Cabinets:
Cloud White



Backsplash:
Eksa Island White



Quartz Countertops:
Flint



Carpet:
Fog



Paint:
Designer Grey

This home features the following:

- Level 1 kitchen upgrade complete with crown moulding, island extension, 42" upper cabinets, and one pots and pans drawer
- Level 1 ensuite upgrade complete with a soaker tub, standing shower with tile surround, dual sinks and an additional bank of drawers
- Main floor bedroom
- Full bath on main floor
- Upgrade tubshower to shower on main floor bath
- Alternate layout on second floor (four bedroom)
- 9' basement foundation height
- Exterior side entry to basement

Standard features:

- BUILT GREEN® certified home
- Complete 6-piece ENERGY STAR® rated appliance package
- 1 1/4" quartz countertops throughout
- Luxury vinyl plank throughout entire main floor and second floor wet areas
- Full yard landscaping
- Please see your Area Manager for the complete list of standard features

You can purchase this home for:

\$

including home, lot and GST

Home availability:



JAN

FEB

MAR

APR

MAY

JUN

JUL

AUG

SEP

OCT

NOV

DEC

For more information:



Sudip Punoria
ALCES AREA MANAGER

T: 780-709-8730

E: spunoria@excelhomes.ca

**EXCEL
HOMES**

..... Simplifying your journey home.

This floorplan represents one version of this home and measurements are approximate. The square footage, measurements and layout may vary based on the elevation and/or lot. All elevations shown are artist's concept only and will vary by community. The builder reserves the right to make modifications or substitutions should they be necessary. All plans, options, dimensions, specifications, materials and drawings are subject to change without notice. E.&O.E

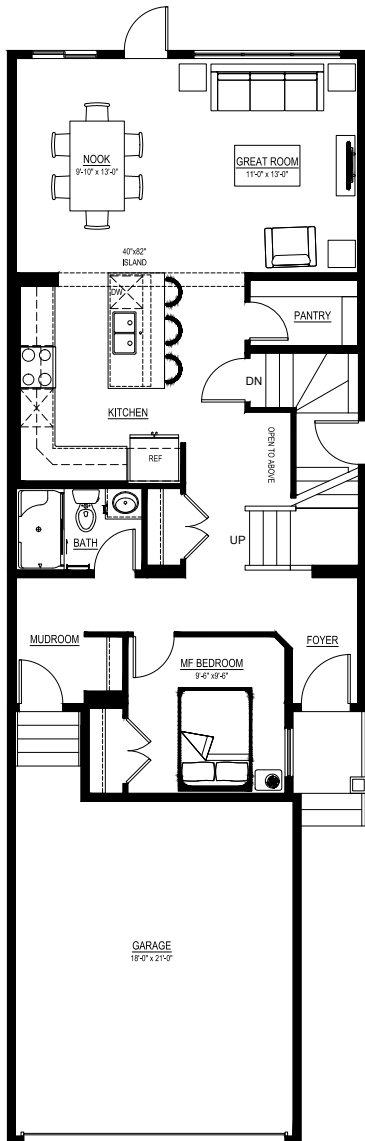
Meet the

Kensington

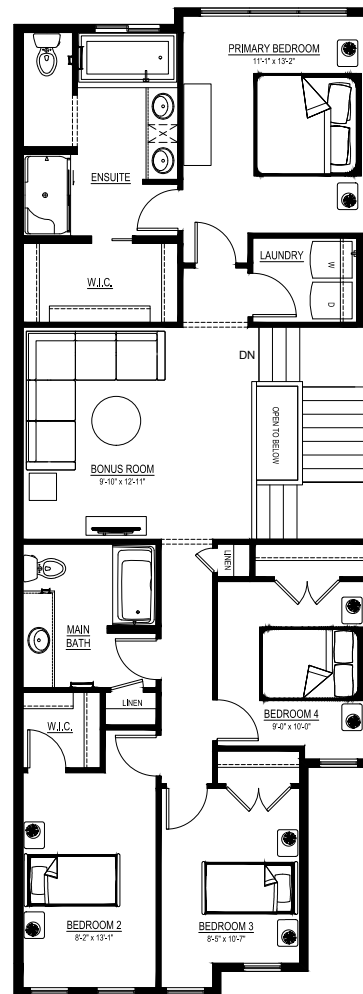
QUICK POSSESSION HOME IN ALCES 2264 4TH AVE NW

Floor plans

MAIN FLOOR
962 SQ.FT.



SECOND FLOOR
1243 SQ.FT.



For more
information.

Sudip Punoria
ALCES AREA MANAGER

780-709-8730
SPUNORIA@EXCELHOMES.CA

EXCELHOMES.CA

This floorplan represents one version of this home and measurements are approximate. The square footage, measurements and layout may vary based on the elevation and/or lot. All elevations shown are artist's concept only and will vary by community. The builder reserves the right to make modifications or substitutions should they be necessary. All plans, options, dimensions, specifications, materials and drawings are subject to change without notice. E.&O.E