

Meet the Fieldcrest

QUICK POSSESSION HOME IN EDMONTON
9100 ELVES LOOP NW EDMONTON, ALBERTA



FRONT GARAGE
COLLECTION

1845 SQ.
FT.



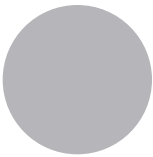
2.5



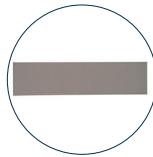
This home's interior palette is the following:



LVP:
Arctic



Cabinets:
Light Grey



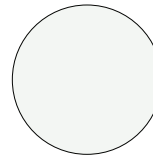
Backsplash:
Light Grey Glossy



Quartz Countertops:
Crystal Crescent



Carpet:
Weathered



Paint:
Summit

This home features the following:

- Level 1 kitchen upgrade complete with crown moulding, island extension, 42" upper cabinets, and one pots and pans drawer
- Level 1 pendant to kitchen island
- Level 1 small chandelier to nook
- Bank of two drawers to ensuite
- Dual sinks to ensuite
- Standard height electric fireplace
- 9' foundation height
- Exterior side entry to basement
- Basement suite rough-in (one bedroom)

Standard features:

- BUILT GREEN® certified home
- Complete 6-piece ENERGY STAR® rated appliance package
- 1 1/4" quartz countertops throughout
- Luxury vinyl plank throughout entire main floor and second floor wet areas
- Full yard landscaping
- Please see your Area Manager for the complete list of standard features

You can purchase this home for:

\$

including home, lot and GST

Home availability:



JAN

FEB

MAR

APR

MAY

JUN

JUL

AUG

SEP

OCT

NOV

DEC

For more information:



Anabela daPonte-Cordeiro
EDGEMONT AREA MANAGER

T: 780-756-8515

E: edgemont@excelhomes.ca

**EXCEL
HOMES**

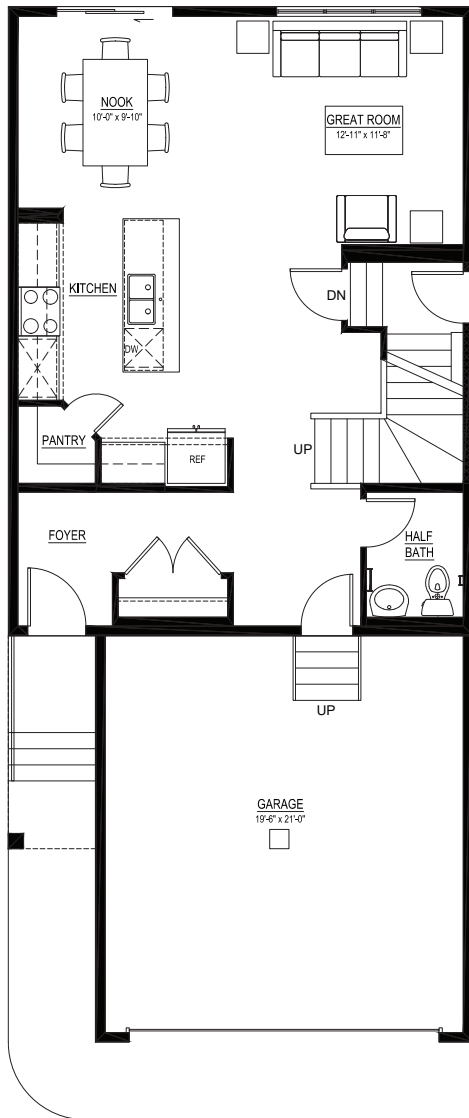
..... Simplifying your journey home.

Meet the Fieldcrest

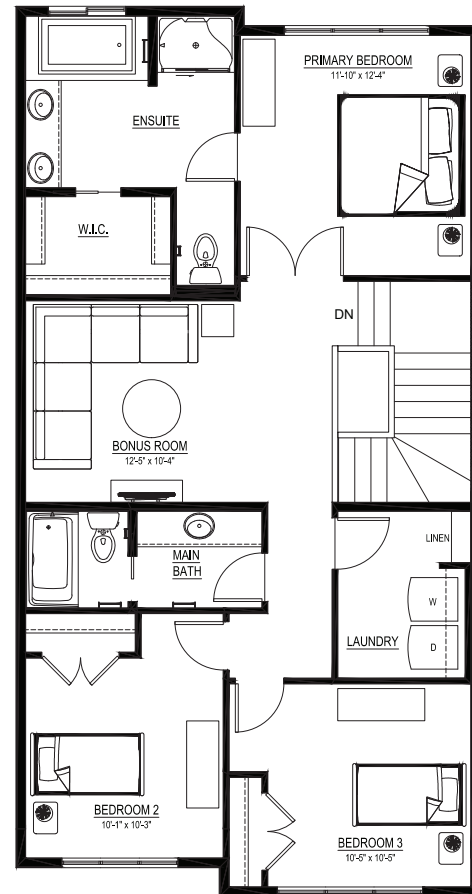
QUICK POSSESSION HOME IN EDMONT 9100 ELVES LOOP NW

Floor plans

MAIN FLOOR
780 SQ.FT.



SECOND FLOOR
1065 SQ.FT.



For more
information.

Anabela daPonte-Cordeiro
EDMONT AREA MANAGER

780-756-8515
EDMONT@EXCElhOMES.CA

EXCElhOMES.CA

This floorplan represents one version of this home and measurements are approximate. The square footage, measurements and layout may vary based on the elevation and/or lot. All elevations shown are artist's concept only and will vary by community. The builder reserves the right to make modifications or substitutions should they be necessary. All plans, options, dimensions, specifications, materials and drawings are subject to change without notice. E.&O.E