

Meet the Emerson

QUICK POSSESSION HOME IN EDMONTON
7508 ELMER BEND NW EDMONTON, ALBERTA



FRONT GARAGE
COLLECTION

1462 SQ.
FT.

3

2.5



This home's interior palette is the following:



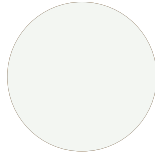
LVP:
Endless Summer



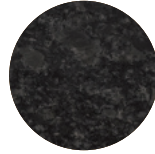
Cabinets:
Stargazer



Backsplash/Tile:
London Grey



Wall Paint:
Summit



Eng. Stone:
Silver Pearl



Carpet:
Wall Street

This home features the following

- 9' Main Floor Ceiling
- Level 0 Kitchen
- Engineered Stone Countertops
- Level 1 Doors & Hardware
- Exterior Side Entry to Basement

Standard features:

- BUILT GREEN® certified home
- Stainless steel appliances
- Thermally fused laminate cabinets
- Luxury vinyl plank throughout entire main floor and second floor wet areas
- Please see your Area Manager for the complete list of standard features

You can purchase this home for:

\$

including home, lot and GST

Home availability:



For more information:



Derek Poworoznik
EDGEMONT AREA MANAGER

T: 780-756-8515
E: edgemont@excelhomes.ca



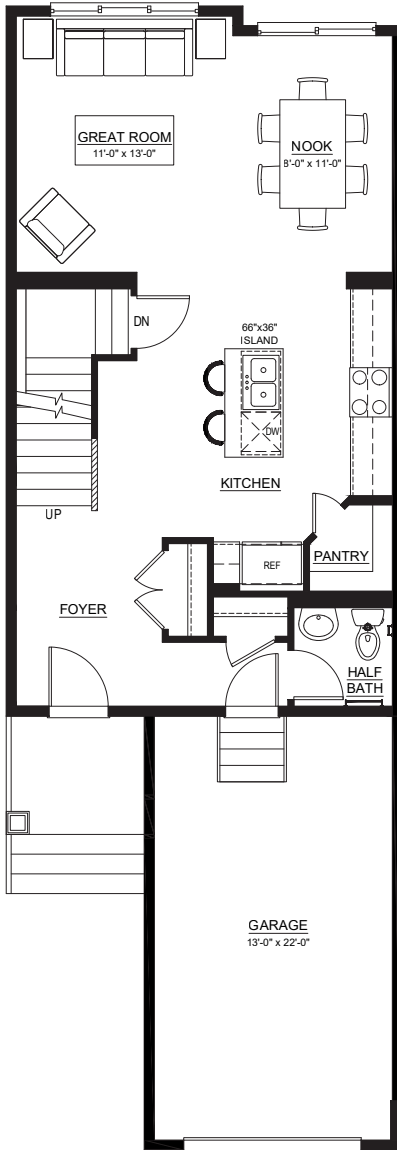
Simplifying your journey home.

Meet the Emerson

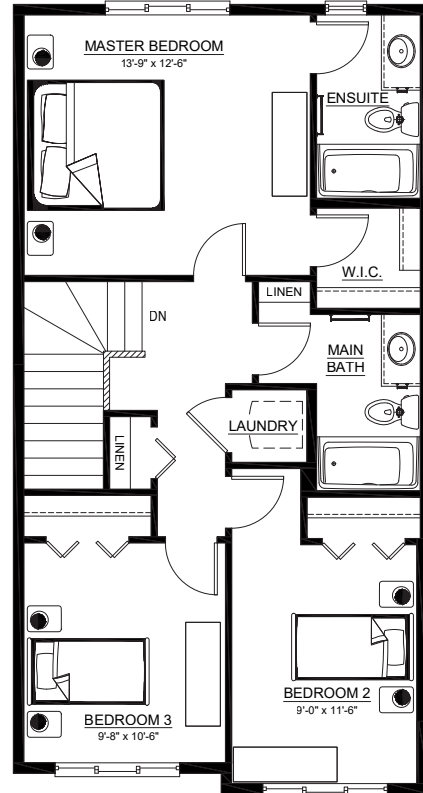
QUICK POSSESSION IN EDMONTON 7508 ELMER BEND NW

Floor plans

MAIN FLOOR
712 SQ.FT.



SECOND FLOOR
750 SQ.FT.



For more information.

Derek Poworoznik
EDMONTON AREA MANAGER

780-756-8515
EDMONTON@EXCELHOMES.CA

EXCELHOMES.CA

This floor plan represents one version of this home and measurements are approximate. The square footage, measurements and layout may vary based on the elevation and/or lot. All elevations shown are artist's concept only and will vary by community. The builder reserves the right to make modifications or substitutions should they be necessary. All plans, options, dimensions, specifications, materials and drawings are subject to change without notice. E.&O.E