

Meet the Emerson

QUICK POSSESSION HOME IN EDMONTON
3344 ERLANGER BEND NW EDMONTON, ALBERTA



DUPLEX
COLLECTION

1462 SQ.
FT.

3

2.5



This home's interior palette is the following:



LVP:
Montreal



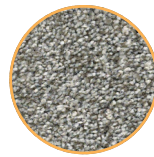
Cabinets:
First Class



Backsplash:
White Glossy



Quartz Countertops:
Diavik



Carpet:
Walking Trail



Paint:
Summit

This home features the following:

- Level 1 kitchen
- Exterior side entry to basement
- 1-bedroom basement suite rough-in

Standard features:

- BUILT GREEN® certified home
- Stainless steel appliances
- Thermally fused laminate cabinets
- Luxury vinyl plank throughout entire main floor and second floor wet areas
- Please see your Area Manager for the complete list of standard features

You can purchase this home for:

\$

including home, lot and GST

Home availability:



For more information:



Anabela daPonte-Cordeiro
EDGEMONT AREA MANAGER

T: 780-278-9143

E: edgemont@excelhomes.ca



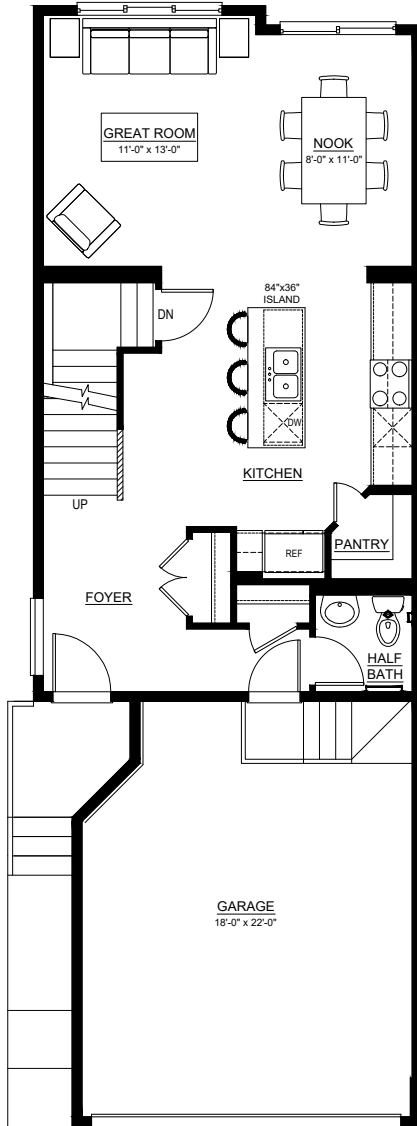
..... Simplifying your journey home.

Meet the Emerson

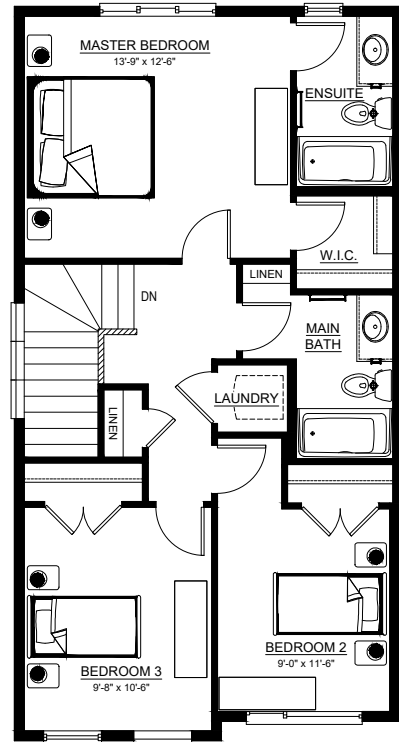
QUICK POSSESSION HOME IN EDMONTON 3344 ERLANGER BEND NW

Floor plans

MAIN FLOOR
712 SQ.FT.



SECOND FLOOR
750 SQ.FT.



For more information.

Anabela daPonte-Cordeiro
EDMONTON AREA MANAGER

780-278-9143
EDMONTON@EXCELHOMES.CA

EXCELHOMES.CA

This floorplan represents one version of this home and measurements are approximate. The square footage, measurements and layout may vary based on the elevation and/or lot. All elevations shown are artist's concept only and will vary by community. The builder reserves the right to make modifications or substitutions should they be necessary. All plans, options, dimensions, specifications, materials and drawings are subject to change without notice. E.&O.E