

Meet the Edge



QUICK POSSESSION HOME IN EDMONTON
8799 EDMONTON LINK NW EDMONTON, ALBERTA



TOWNHOUSE
COLLECTION

1630 SQ.
FT.

3

3

This home's interior palette is the following:



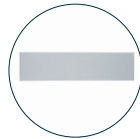
LVP:
Focus



Kitchen Upper,
Ensuite & Bath
Cabinets:
Suede Stone



Kitchen Lower
Cabinets:
Chicory



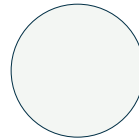
Backsplash:
Eksa Island
White



Countertops:
Linen Cream



Carpet:
Coconut Brown



Paint:
Summit

This home features the following:

- Level 1 kitchen upgrade complete with crown moulding, island extension, 42" upper cabinets, and one pots and pans drawer
- Developed 2 bedroom basement suite
- Main floor full bathroom with walk-in shower
- Level 2 chrome island pendent to kitchen

You can purchase this home for:

\$

including home, lot and GST

Standard features:

- BUILT GREEN® certified home
- Complete 6-piece ENERGY STAR® rated appliance package
- 1 1/4" quartz countertops throughout
- Luxury vinyl plank throughout entire main floor and second floor wet areas
- Full yard landscaping
- Please see your Area Manager for the complete list of standard features

Home availability:



For more information:



Anabela daPonte-Cordeiro
EDGEMONT AREA MANAGER

T: 780-278-9143

E: edgemont@excelhomes.ca



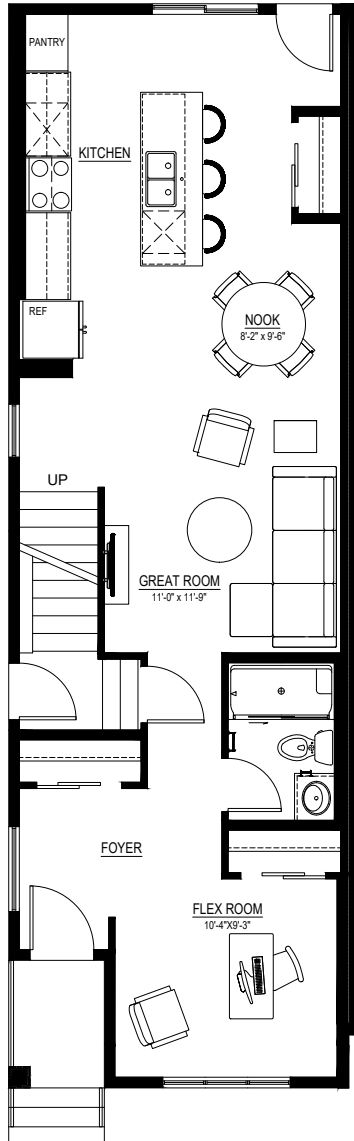
Simplifying your journey home.

Meet the Edge

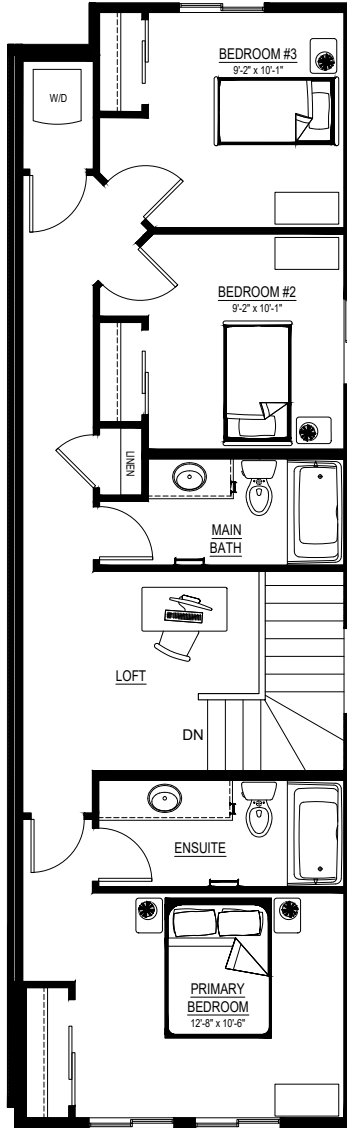
QUICK POSSESSION HOME IN EDMONTON 8799 EDMONTON LINK NW

Floor plans

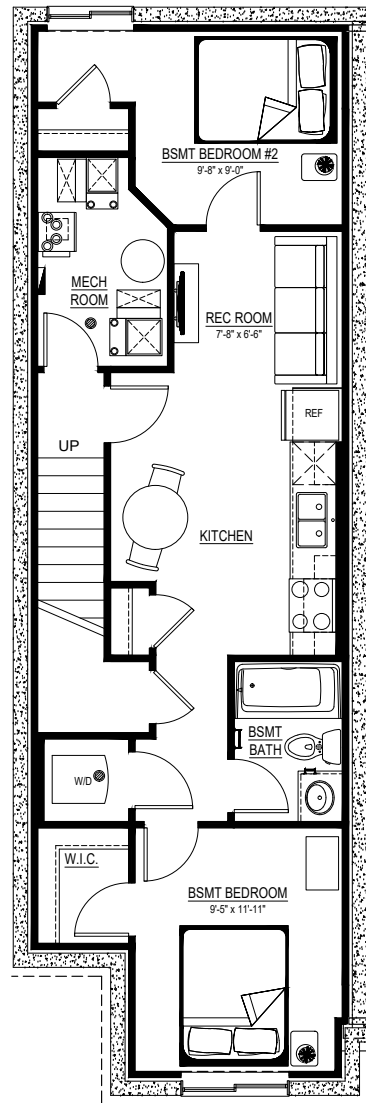
MAIN FLOOR
789 SQ.FT.



SECOND FLOOR
841 SQ.FT.



BASEMENT SUITE
606 SQ.FT.



For more information.

Anabela daPonte-Cordeiro
EDMONTON AREA MANAGER

780-278-9143
EDMONTON@EXCELHOMES.CA

EXCELHOMES.CA