

Meet the Edge



QUICK POSSESSION HOME IN EDMONTON
8799 EDMONTON LINK NW EDMONTON, ALBERTA



TOWNHOUSE
COLLECTION

1630 SQ.
FT.

3

3

This home's interior palette is the following:



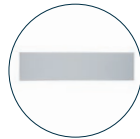
LVP:
Focus



Kitchen Upper,
Ensuite & Bath
Cabinets:
Suede Stone



Kitchen Lower
Cabinets:
Chicory



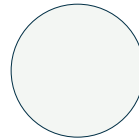
Backsplash:
Eksa Island
White



Countertops:
Linen Cream



Carpet:
Coconut Brown



Paint:
Summit

This home features the following:

- Rear detached garage
- Level 1 kitchen upgrade complete with crown moulding, island extension, 42" upper cabinets, and one pots and pans drawer
- Developed 2 bedroom basement suite
- Main floor full bathroom with walk-in shower
- Level 2 chrome island pendent to kitchen

Standard features:

- BUILT GREEN® certified home
- Complete 6-piece ENERGY STAR® rated appliance package
- 1 1/4" quartz countertops throughout
- Luxury vinyl plank throughout entire main floor and second floor wet areas
- Full yard landscaping
- Please see your Area Manager for the complete list of standard features

You can purchase this home for:

\$

including home, lot and GST

Home availability:



For more information:



Anabela daPonte-Cordeiro
EDGEMONT AREA MANAGER

T: 780-278-9143

E: edgemont@excelhomes.ca



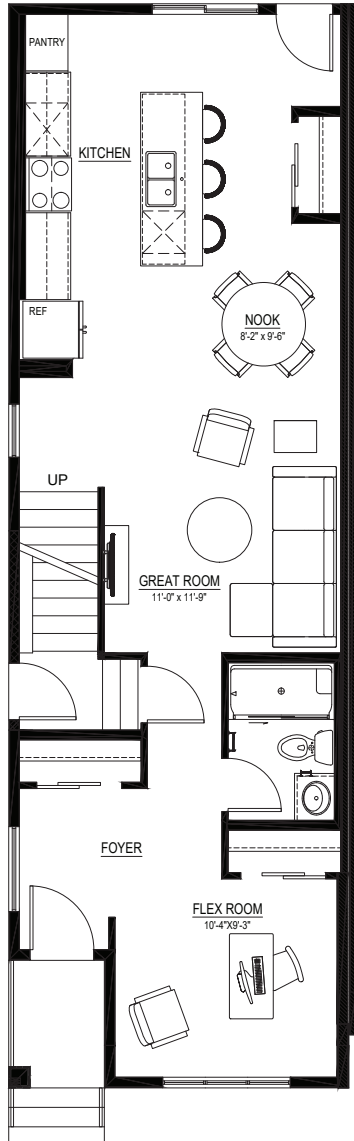
Simplifying your journey home.

Meet the Edge

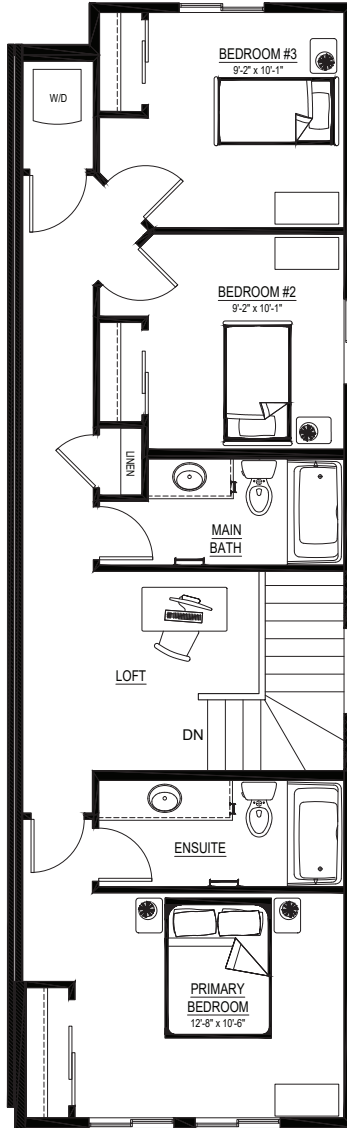
QUICK POSSESSION HOME IN EDMONTON 8799 EDMONTON LINK NW

Floor plans

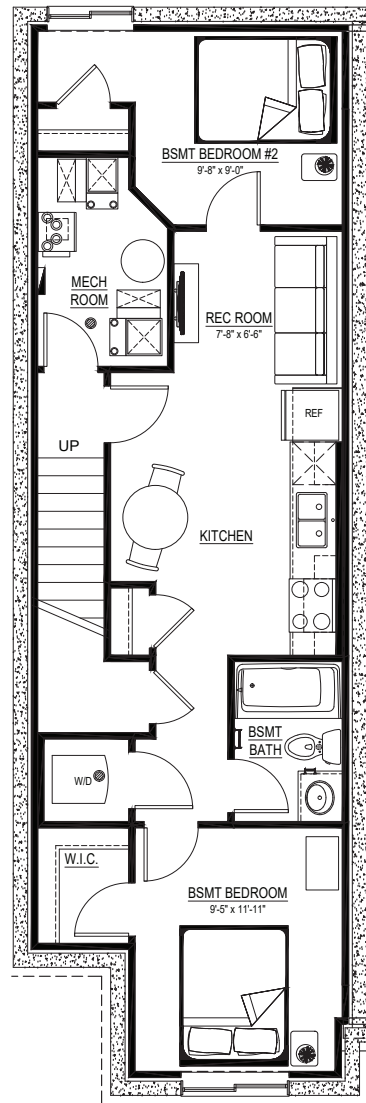
• MAIN FLOOR
• 789 SQ.FT.



• SECOND FLOOR
• 841 SQ.FT.



• BASEMENT SUITE
• 606 SQ.FT.



For more information.

Anabela daPonte-Cordeiro
EDMONTON AREA MANAGER

780-278-9143
EDMONTON@EXCELHOMES.CA

EXCELHOMES.CA