

Meet the Edge



QUICK POSSESSION HOME IN EDMONTON
8795 EDMONTON LINK NW EDMONTON, ALBERTA



TOWNHOUSE COLLECTION

1630 SQ. FT.

3

2.5

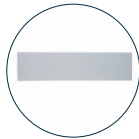
This home's interior palette is the following:



LVP: Arctic



Cabinets: Oxford Grey



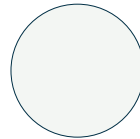
Backsplash: Eksa Island White



Countertops: White Rock



Carpet: Dragon Grey



Paint: Summit

This home features the following:

- Level 1 kitchen upgrade complete with crown moulding, island extension, 42" upper cabinets, and one pots and pans drawer

Standard features:

- BUILT GREEN® certified home
- Complete 6-piece ENERGY STAR® rated appliance package
- 1 1/4" quartz countertops throughout
- Luxury vinyl plank throughout entire main floor and second floor wet areas
- Full yard landscaping
- Please see your Area Manager for the complete list of standard features

You can purchase this home for:

\$

including home, lot and GST

Home availability:



For more information:



Anabela daPonte-Cordeiro
EDGEMONT AREA MANAGER

T: 780-278-9143
E: edgemont@excelhomes.ca



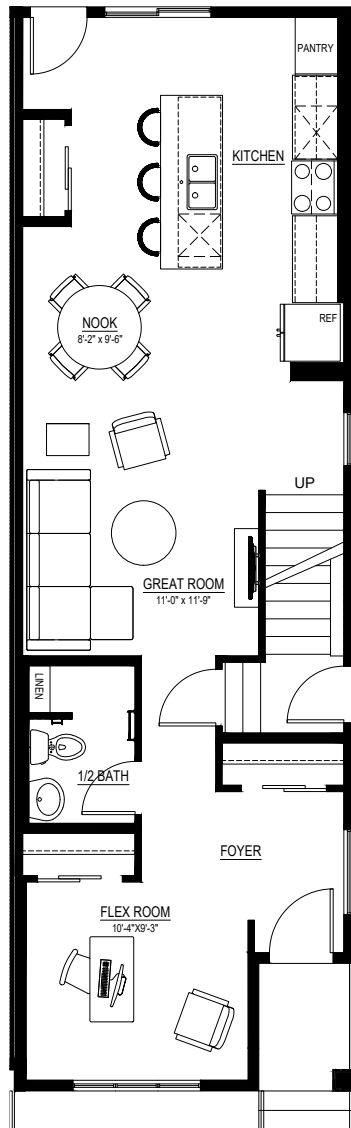
Simplifying your journey home.

Meet the Edge

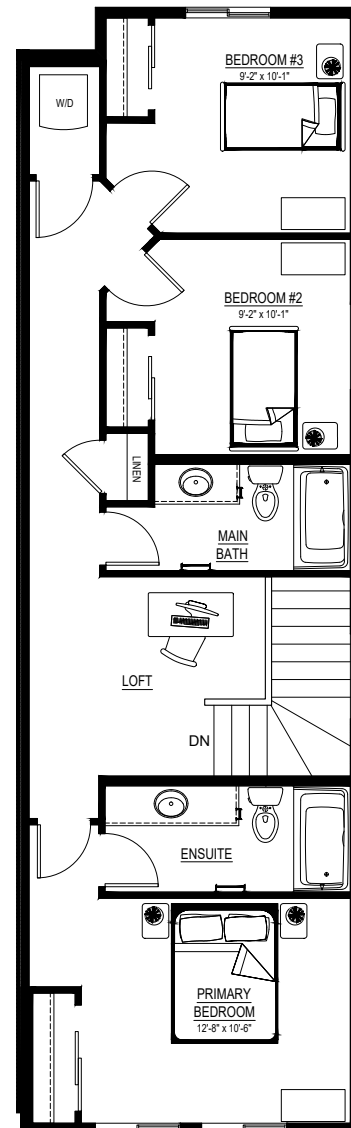
QUICK POSSESSION HOME IN EDMONTON 8795 EDMONTON LINK NW

Floor plans

MAIN FLOOR
789 SQ.FT.



SECOND FLOOR
841 SQ.FT.



For more information.

Anabela daPonte-Cordeiro
EDMONTON AREA MANAGER

780-278-9143
EDMONTON@EXCELHOMES.CA

EXCELHOMES.CA