

# Meet the Edge

QUICK POSSESSION HOME IN EDMONTON  
8783 EDMONTON LINK NW, EDMONTON, ALBERTA



TOWNHOME COLLECTION

1630 SQ. FT.

4

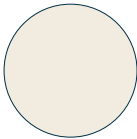
3



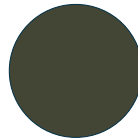
## This home's interior palette is the following:



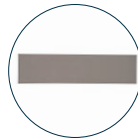
LVP: Vision



Kitchen Uppers and Bathroom Cabinets: Gardenia



Kitchen Lowers and Island Cabinets: Pewter Green



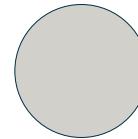
Backsplash: Light Grey Matte



Countertops: White Rock



Carpet: Democracy



Paint: Crystal

## This home features the following:

- Rear detached garage
- Level 1 kitchen upgrade complete with crown moulding, island extension, 42" upper cabinets, and one pots and pans drawer
- Main floor full bedroom
- Main floor full bathroom
- Level 1 matte black pendant to kitchen island
- Level 1 matte black chandelier to nook
- Exterior side entry

## Standard features:

- BUILT GREEN® certified home
- Complete 6-piece ENERGY STAR® rated appliance package
- 1 1/4" quartz countertops throughout
- Luxury vinyl plank throughout entire main floor and second floor wet areas
- Full yard landscaping
- Please see your Area Manager for the complete list of standard features

## You can purchase this home for:

\$

including home, lot and GST

## Home availability:



## For more information:



**Anabela daPonte-Cordeiro**  
EDGEMONT AREA MANAGER

T: 780-278-9143

E: edgemont@excelhomes.ca



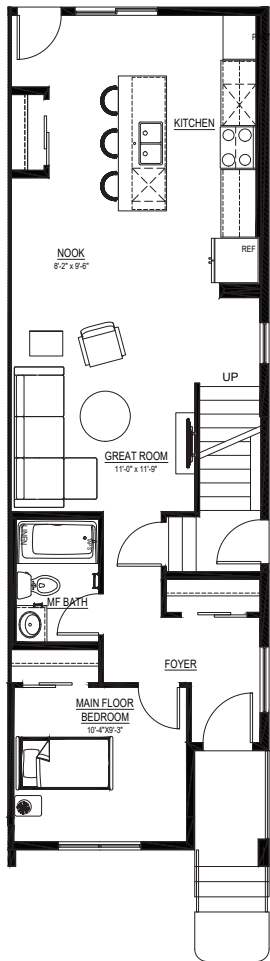
..... Simplifying your journey home.

# Meet the Edge

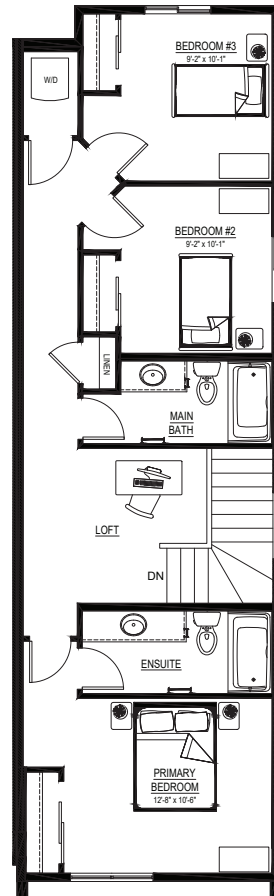
QUICK POSSESSION HOME IN EDMONTON 8783 EDMONTON LINK NW

## Floor plans

• MAIN FLOOR  
• 789 SQ.FT.



• SECOND FLOOR  
• 841 SQ.FT.



For more information.

Anabela daPonte-Cordeiro  
EDMONTON AREA MANAGER

780-278-9143  
EDMONTON@EXCELHOMES.CA

EXCELHOMES.CA

This floor plan represents one version of this home and measurements are approximate. The square footage, measurements and layout may vary based on the elevation and/or lot. All elevations shown are artist's concept only and will vary by community. The builder reserves the right to make modifications or substitutions should they be necessary. All plans, options, dimensions, specifications, materials and drawings are subject to change without notice. E.&O.E