

Meet the Echo

QUICK POSSESSION HOME IN EDMONTON
8927 ELVES LOOP NW EDMONTON, ALBERTA



DUPLEX
COLLECTION

1335 SQ.
FT.

3

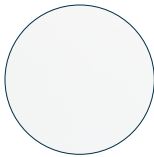
2.5



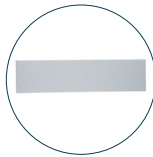
This home's interior palette is the following:



LVP:
Sittler



Cabinets:
Cloud White



Backsplash:
Eksa Island
White Matte



Quartz Countertops:
White Rock



Carpet:
Sand Martin



Paint:
Designer Grey

This home features the following:

- Level 1 kitchen upgrade complete with crown moulding, island extension, 42" upper cabinets with step above and one pots & pans drawer
- Exterior side entry to basement
- Rear pressure treated deck

Standard features:

- BUILT GREEN® certified home
- Stainless steel appliances
- Thermally fused laminate cabinets
- Luxury vinyl plank throughout entire main floor and second floor wet areas
- Please see your Area Manager for the complete list of standard features

You can purchase this home for:

\$

including home, lot and GST

Home availability:



For more information:



Anabela daPonte-Cordeiro
EDMONTON AREA MANAGER

T: 780-756-8515
E: edgemont@excelhomes.ca

**EXCEL
HOMES**

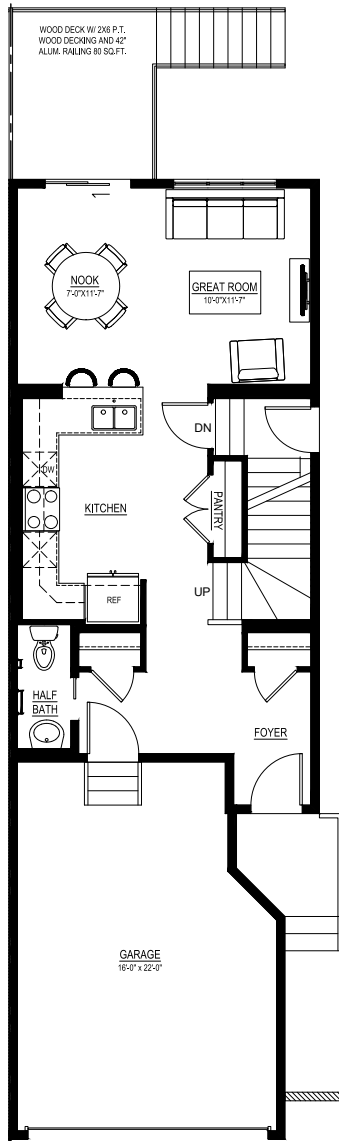
..... Simplifying your journey home.

Meet the Echo

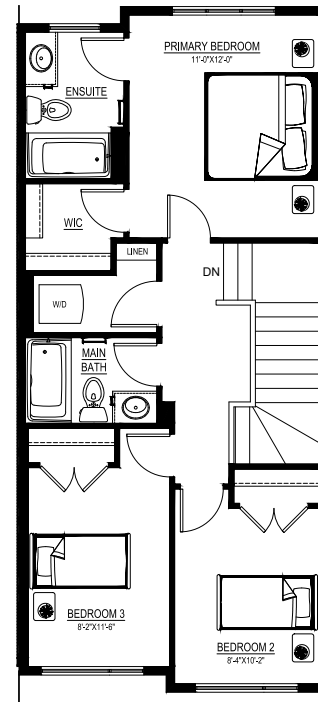
QUICK POSSESSION HOME IN EDMONTON 8927 ELVES LOOP NW

Floor plans

MAIN FLOOR
629 SQ.FT.



SECOND FLOOR
706 SQ.FT.



For more
information.

Anabela daPonte-Cordeiro
EDMONTON AREA MANAGER

780-756-8515
EDMONTON@EXCElhOMES.CA

EXCElhOMES.CA

This floorplan represents one version of this home and measurements are approximate. The square footage, measurements and layout may vary based on the elevation and/or lot. All elevations shown are artist's concept only and will vary by community. The builder reserves the right to make modifications or substitutions should they be necessary. All plans, options, dimensions, specifications, materials and drawings are subject to change without notice. E.&O.E