

# Meet the Echo

QUICK POSSESSION HOME IN VITA CRYSTALLINA  
18107 74 STREET NW EDMONTON, ALBERTA



DUPLEX  
COLLECTION

1323 SQ.  
FT.

3

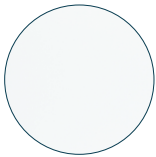
2.5



## This home's interior palette is the following:



LVP:  
Arctic



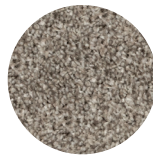
Cabinets:  
White Cloud



Backsplash:  
Eksa Atlas White



Quartz Countertops:  
Diavik



Carpet:  
Mountain Rocks



Paint:  
Designer Grey

## This home features the following:

- Level 1 kitchen upgrade complete with crown moulding, island extension, 42" upper cabinets, and one pots and pans drawer
- Exterior side entry to basement

## Standard features:

- BUILT GREEN® certified home
- Stainless steel appliances
- Thermally fused laminate cabinets
- Luxury vinyl plank throughout entire main floor and second floor wet areas
- Please see your Area Manager for the complete list of standard features

## You can purchase this home for:

\$

including home, lot and GST

## Home availability:



JAN

FEB

MAR

APR

MAY

JUN

JUL

AUG

SEP

OCT

NOV

DEC

## For more information:



**Sudip Punoria**

VITA CRYSTALLINA AREA MANAGER

T: 780-709-8730

E: [spunoria@excelhomes.ca](mailto:spunoria@excelhomes.ca)

**EXCEL  
HOMES**

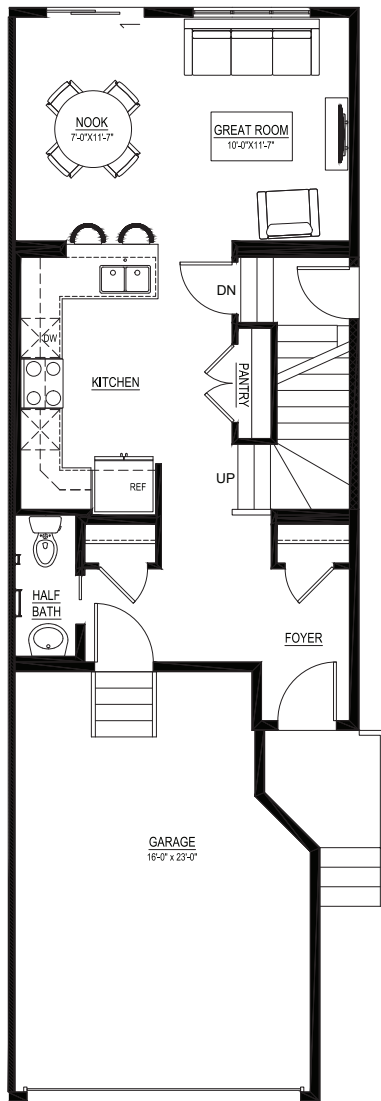
..... Simplifying your journey home.

# Meet the Echo

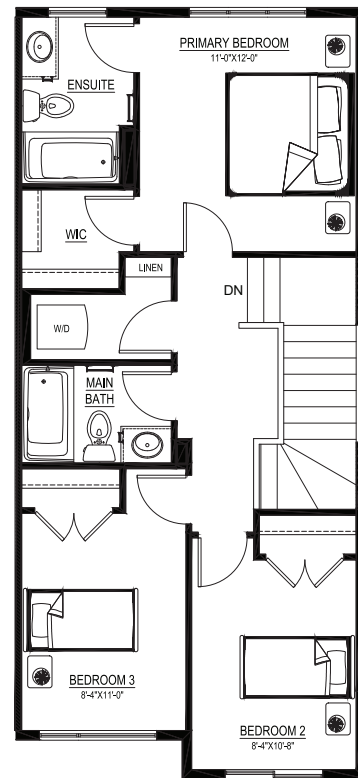
QUICK POSSESSION HOME IN VITA CRYSTALLINA 18107 74 STREET NW

## Floor plans

MAIN FLOOR  
629 SQ.FT.



SECOND FLOOR  
694 SQ.FT.



For more  
information.

**Sudip Punoria**  
VITA CRYSTALLINA AREA MANAGER

**780-709-8730**  
SPUNORIA@EXCELHOMES.CA

EXCELHOMES.CA

This floorplan represents one version of this home and measurements are approximate. The square footage, measurements and layout may vary based on the elevation and/or lot. All elevations shown are artist's concept only and will vary by community. The builder reserves the right to make modifications or substitutions should they be necessary. All plans, options, dimensions, specifications, materials and drawings are subject to change without notice. E.&O.E