

Meet the Cypress

QUICK POSSESSION HOME IN ALCES
2271 ALCES DRIVE SW EDMONTON, ALBERTA



LANE COLLECTION

1521 SQ. FT.



2.5



This home's interior palette is the following:



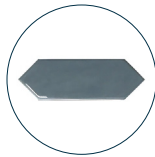
LVP: Nurture



Kitchen Cabinets: Chicory



Ensuite & Bath Cabinets: Morning Dew



Backsplash: Denim Picket



Countertops: Miami Vena



Carpet: Democracy



Paint: Summit

This home features the following:

- Level 1 kitchen upgrade complete with crown moulding, island extension, 42" upper cabinets, and one pots and pans drawer
- Level 1 matte black faucet to kitchen
- Level 1 black island pendant to kitchen island
- Level 1 black small chandelier to nook
- Level 2 matte black door handles
- Upgrade tubshower to show in ensuite
- Exterior side entry

Standard features:

- BUILT GREEN® certified home
- Complete 6-piece ENERGY STAR® rated appliance package
- 1/4" quartz countertops throughout
- Luxury vinyl plank throughout entire main floor and second floor wet areas
- Full yard landscaping
- Please see your Area Manager for the complete list of standard features

You can purchase this home for:

\$

including home, lot and GST

Home availability:



For more information:



Sudip Punoria
ALCES AREA MANAGER

T: 780-709-8730
E: spunoria@excelhomes.ca



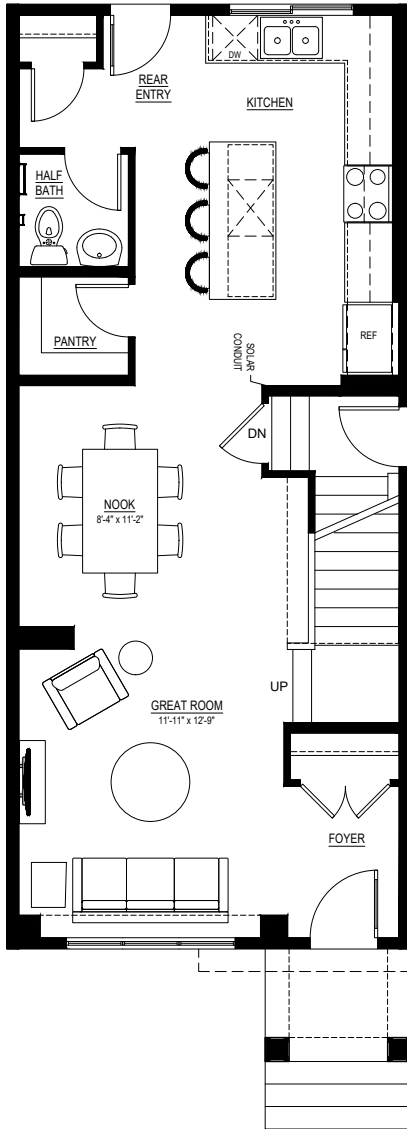
Simplifying your journey home.

Meet the Cypress

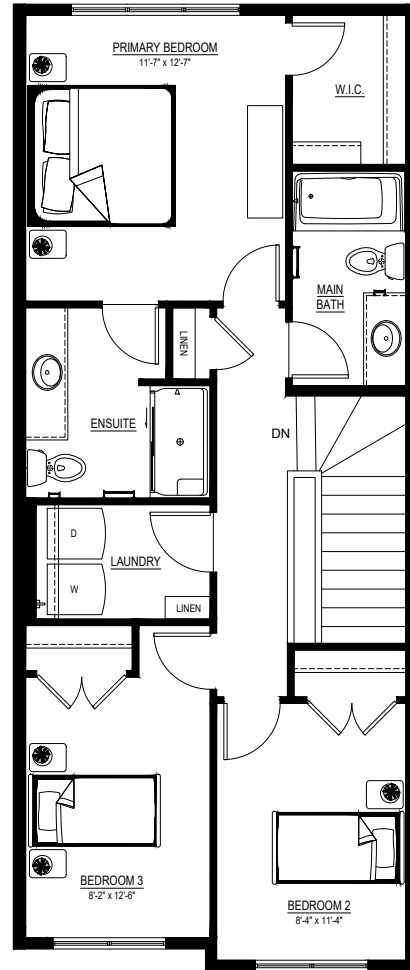
QUICK POSSESSION HOME IN ALCES 2271 ALCES DRIVE SW

Floor plans

MAIN FLOOR
756 SQ.FT.



SECOND FLOOR
765 SQ.FT.



For more information.

Sudip Punoria
ALCES AREA MANAGER

780-709-8730
SPUNORIA@EXCELHOMES.CA

EXCELHOMES.CA

This floorplan represents one version of this home and measurements are approximate. The square footage, measurements and layout may vary based on the elevation and/or lot. All elevations shown are artist's concept only and will vary by community. The builder reserves the right to make modifications or substitutions should they be necessary. All plans, options, dimensions, specifications, materials and drawings are subject to change without notice. E.&O.E