

# Meet the Collingwood

QUICK POSSESSION HOME IN SILVER SPRUCE  
98 SILVER SPRUCE ROAD SW CALGARY, ALBERTA



FRONT GARAGE  
COLLECTION

2227 SQ.  
FT.

4

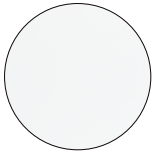
2.5



## This home's interior palette is the following:



LVP:  
Chasing Ice



Kitchen Upper  
Cabinets:  
White Cloud



Lower Cabinets:  
Fashionista



Kitchen &  
Basement Kitchen  
Backsplash:  
Cloud



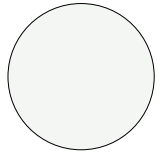
Ensuite & Bath  
Backsplash:  
Marble



Quartz  
Countertops:  
Bright White



Carpet:  
Calipso



Paint:  
Summit

## This home features the following:

- Level 2 kitchen
- Level 2 fridge
- Level 1 alternate layout ensuite
- Kitchen cabinets riser tight to ceiling
- Anthracite undermount silgranit sink to kitchen
- Sliding patio doors
- Double french doors to flex room
- Full-height electric fireplace
- Additional potlights to kitchen, great room and bonus room
- Black metal spindled railing
- Standard washer & dryer
- Vaulted bonus room ceiling
- Rear pressure treated deck
- Gasline to BBQ
- Additional windows to basement
- Exterior side entry to basement
- Developed basement suite (two bedroom)

## Standard features:

- BUILT GREEN® certified home
- Stainless steel appliances
- Thermally fused laminate cabinets
- Luxury vinyl plank throughout entire main floor and second floor wet areas
- Please see your Area Manager for the complete list of standard features

## You can purchase this home for:

\$

including home, lot and GST

## Home availability:



JAN

FEB

MAR

APR

MAY

JUN

JUL

AUG

SEP

OCT

NOV

DEC

## For more information:



**Kent Shupe**

SILVER SPRUCE AREA MANAGER

T: 403-850-2920

E: [silverspruce@excelhomes.ca](mailto:silverspruce@excelhomes.ca)

**EXCEL  
HOMES**

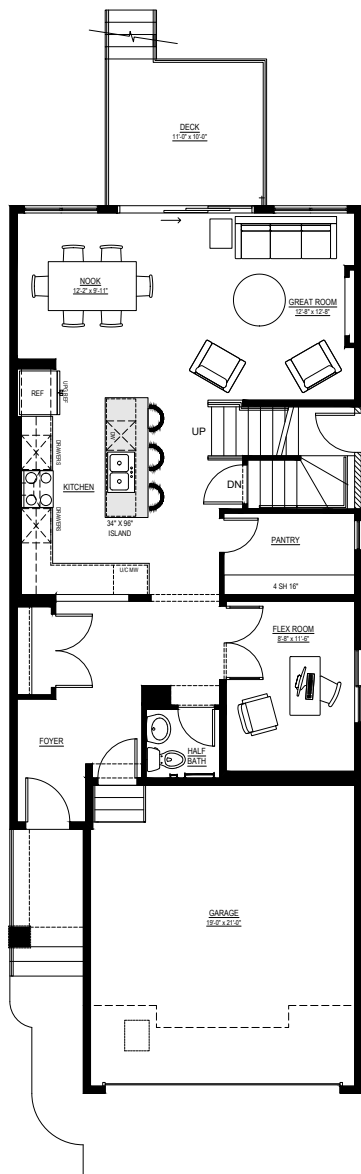
..... Simplifying your journey home.

# Meet the Collingwood

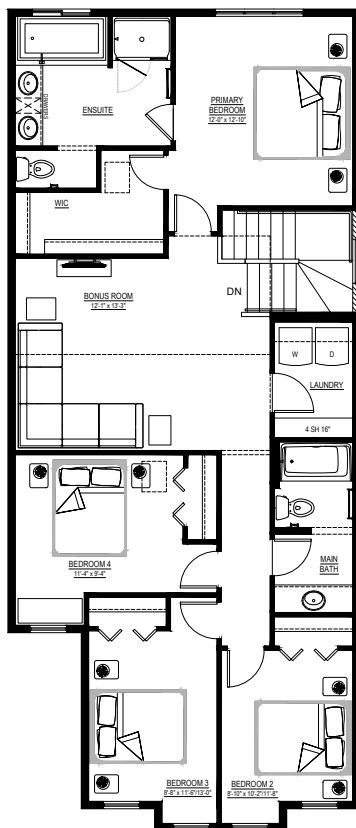
QUICK POSSESSION HOME IN SILVER SPRUCE 98 SILVER SPRUCE ROAD SW

## Floor plans

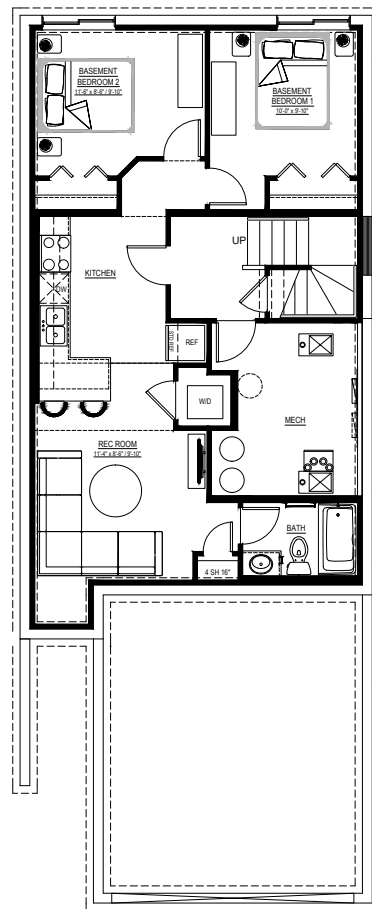
### MAIN FLOOR 965 SQ.FT.



### SECOND FLOOR 1262 SQ.FT.



### BASEMENT SUITE 708 SQ.FT.



For more  
information.

**Kent Shupe**  
SILVER SPRUCE AREA MANAGER

**403-850-2920**  
SILVERSPRUCE@EXCELHOMES.CA

EXCELHOMES.CA

This floorplan represents one version of this home and measurements are approximate. The square footage, measurements and layout may vary based on the elevation and/or lot. All elevations shown are artist's concept only and will vary by community. The builder reserves the right to make modifications or substitutions should they be necessary. All plans, options, dimensions, specifications, materials and drawings are subject to change without notice. E.&O.E