

Meet the Collingwood

QUICK POSSESSION HOME IN STARLING
200 STARLING PLACE NW CALGARY, ALBERTA



FRONT GARAGE
COLLECTION

2247 SQ.
FT.

4

2.5



This home's interior palette is the following:



LVP:
Miss Sunshine



Floor &
Fireplace Tile:
Leiva Light Grey



Cabinets:
Mushroom



Kitchen
Backsplash:
Herringbone
Breccia



Ensuite, Bath
& Laundry
Backsplash:
Leiva Light Grey



Countertops:
Mountain Mist



Carpet:
August Grove



Paint:
Natural White

This home features the following:

- Net zero home
- Level 3 kitchen
- Level 2 fridge
- Level 2 electric range
- Level 3 champagne bronze pull-down faucet to kitchen
- Truffle undermount silgranit sink to kitchen
- Garbage/recycling pull-out to kitchen
- Full-height electric fireplace with tile facing
- Gold lighting package
- Large chandelier to stairwell
- French doors to flex room
- Additional potlights to kitchen, great room & bonus room
- Matte black level 1 door hardware
- Increased rear window height on main floor + sliding patio doors
- Pedestal sink to vanity in main floor bath
- Black metal spindled railing
- Black shower door trim to ensuite
- Swing privacy door to ensuite water closet
- Elongated toilets
- Standard black plumbing package
- Level 1 ensuite
- Level 1 laundry
- Level 1 washer & dryer
- 8' garage overhead door

Standard features:

- BUILT GREEN® certified home
- Stainless steel appliances
- Thermally fused laminate cabinets
- Luxury vinyl plank throughout entire main floor and second floor wet areas
- Please see your Area Manager for the complete list of standard features

You can purchase this home for:

\$

including home, lot and GST

Home availability:



For more information:



Tyler Scott
STARLING AREA MANAGER

T: 368-889-7669
E: starling@excelhomes.ca

**EXCEL
HOMES**

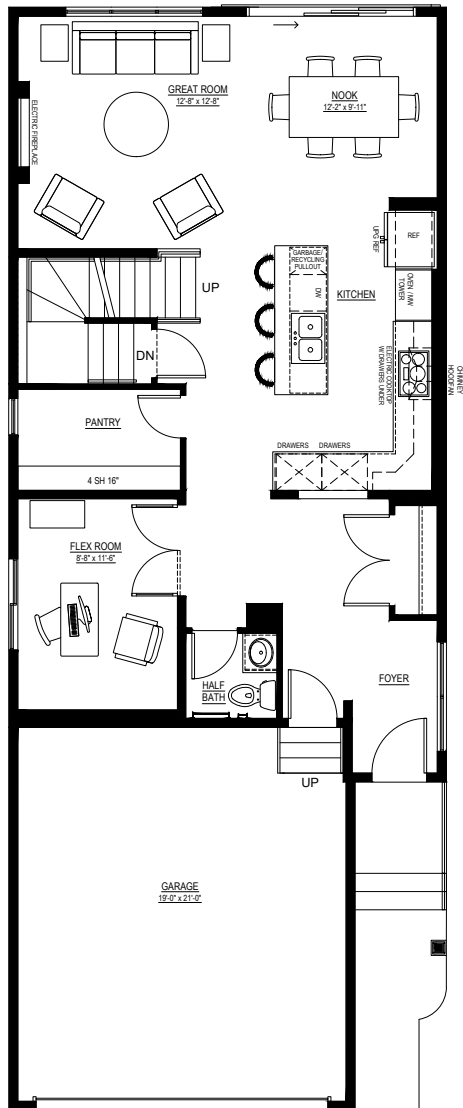
..... Simplifying your journey home.

Meet the Collingwood

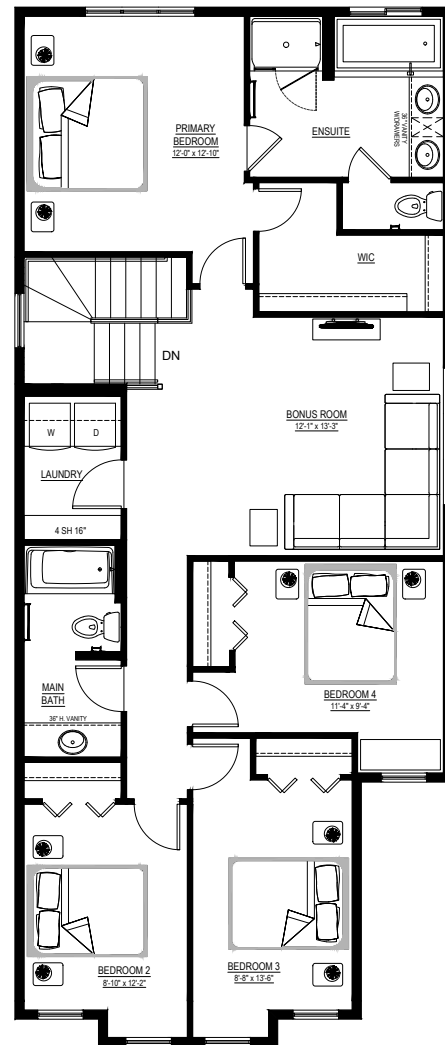
QUICK POSSESSION HOME IN STARLING 200 STARLING PLACE NW

Floor plans

MAIN FLOOR
965 SQ.FT.



SECOND FLOOR
1282 SQ.FT.



For more
information.

Tyler Scott
STARLING AREA MANAGER

368-889-7669
STARLING@EXCELHOMES.CA

EXCELHOMES.CA

This floorplan represents one version of this home and measurements are approximate. The square footage, measurements and layout may vary based on the elevation and/or lot. All elevations shown are artist's concept only and will vary by community. The builder reserves the right to make modifications or substitutions should they be necessary. All plans, options, dimensions, specifications, materials and drawings are subject to change without notice. E.&O.E.