

# Meet the Collingwood

PRE-PLANNED HOME IN SILVER SPRUCE  
126 SILVER SPRUCE GROVE SW CALGARY, ALBERTA



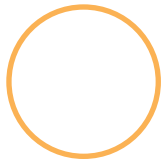
2227 SQ. FT.



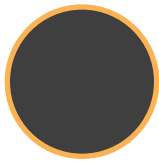
2.5



## This home's interior palette is the following:



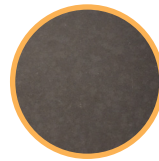
Upper Cabinets: True White



Lower Cabinets: Charcoal



Kitchen Backsplash: Ames Subway - Mist



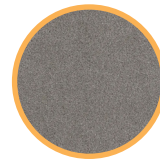
Kitchen Eng. Stone: Carbon



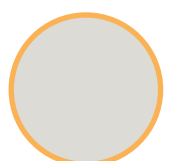
Bath Eng. Stone: Bright White



LVP: Endless Summer



Carpet: Calipso



Paint: Designer Grey

## This home features the following:

- Double french door to flex room
- Level 2 kitchen
- Level 2 fridge
- Full height fireplace
- Increased rear window height to main floor
- Upgraded 3 panel sliding patio door
- Wood railing with metal spindles
- Level 1 ensuite
- Vaulted ceiling in bonus room
- Exterior side entry to basement
- Gasline to BBQ
- Basement suite rough-in
- 9' basement ceiling

## Standard features:

- BUILT GREEN® certified home
- Stainless steel appliances
- Thermally fused laminate cabinets
- Luxury vinyl plank throughout entire main floor and second floor wet areas
- Please see your Area Manager for the complete list of standard features

## You can purchase this home for:



including home, lot and GST

## Home availability:



## For more information:



**Kent Shupe**  
SILVER SPRUCE AREA MANAGER

T: 403-850-2920  
E: silverspruce@excelhomes.ca



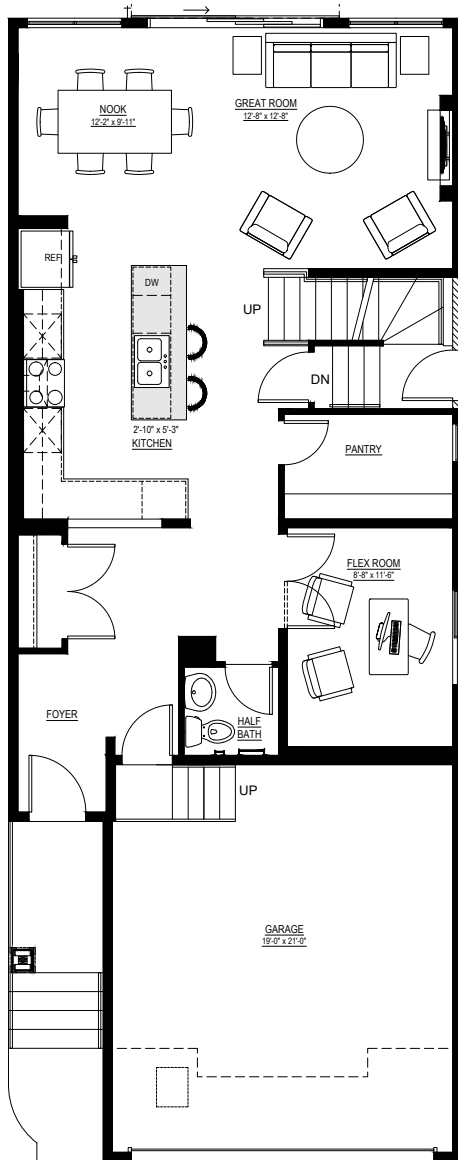
Simplifying your journey home.

# Meet the Collingwood

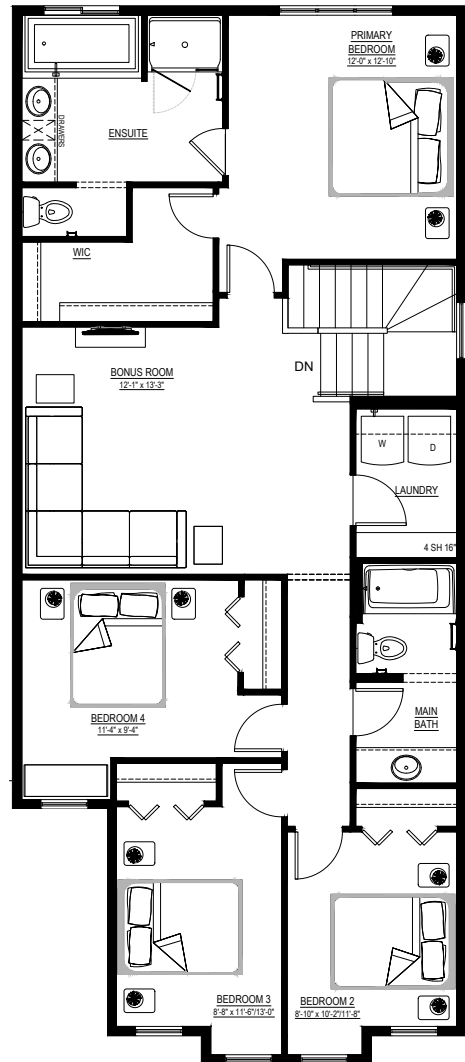
PRE-PLANNED HOME IN SILVER SPRUCE 126 SILVER SPRUCE GROVE SW

## Floor plans

MAIN FLOOR  
965 SQ.FT.



SECOND FLOOR  
1270 SQ.FT.



For more information.

**Kent Shupe**  
SILVER SPRUCE AREA MANAGER

**403-850-2920**  
SILVERSPRUCE@EXCELHOMES.CA

[EXCELHOMES.CA](http://EXCELHOMES.CA)

This floorplan represents one version of this home and measurements are approximate. The square footage, measurements and layout may vary based on the elevation and/or lot. All elevations shown are artist's concept only and will vary by community. The builder reserves the right to make modifications or substitutions should they be necessary. All plans, options, dimensions, specifications, materials and drawings are subject to change without notice. E.&O.E