



Meet the Cohen



QUICK POSSESSION HOME IN LEWISBURG
67 LEWISBURG MANOR NE CALGARY, ALBERTA



DUPLEX
COLLECTION

1736 SQ.
FT.

4

3

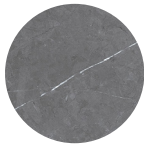
This home's interior palette is the following:



LVP:
Whispered XL



Cabinets:
Oxford Grey



Backsplash:
Leiva Graphite



Ensuite &
Kitchen
Countertops:
Ivory Coast



Basement Main
Bath & Laundry
Countertops:
Bright White



Carpet:
Gravel Stone



Paint:
Designer Grey

This home features the following:

- Main floor bedroom
- Full bath on main floor
- Level 3 gas range
- Gun metal grey iron spindled railing
- Bank of three drawers to ensuite
- Upgrade tubshower to shower in main floor bath
- Laundry countertop
- Additional potlights to kitchen, great room & bonus room
- Vaulted bonus room ceiling
- Developed basement suite (two bedroom)
- Exterior side entry to basement
- Standard washer & dryer to basement
- Rear pressure treated landing
- Gasline to BBQ

Standard features:

- BUILT GREEN® certified home
- Stainless steel appliances
- Thermally fused laminate cabinets
- Luxury vinyl plank throughout entire main floor and second floor wet areas
- Please see your Area Manager for the complete list of standard features

You can purchase this home for:



including home, lot and GST

Home availability:



For more information:



Cathey Tracey
LEWISBURG AREA MANAGER

T: 368-889-7643
E: lewisburg@excelhomes.ca



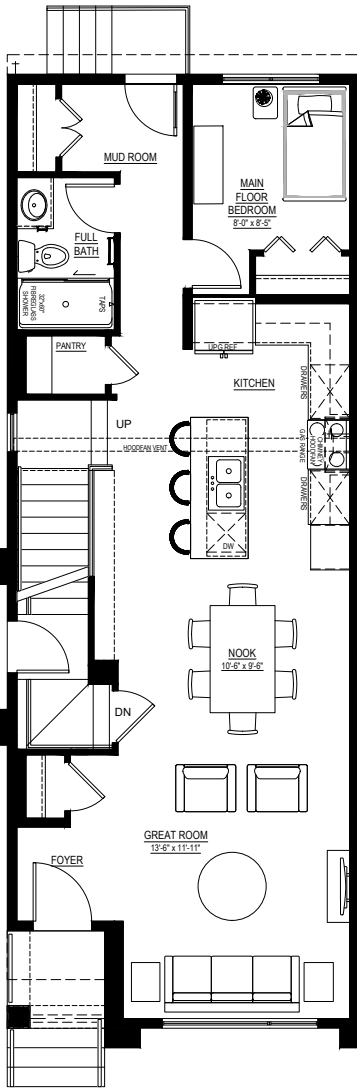
..... Simplifying your journey home.

Meet the Cohen

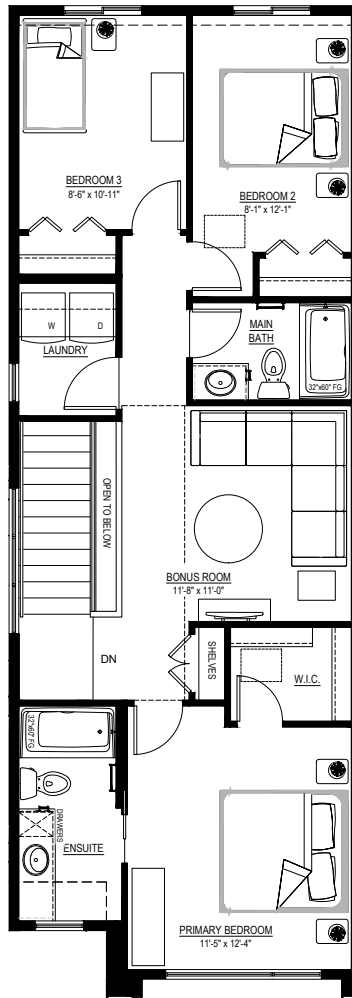
QUICK POSSESSION HOME IN LEWISBURG 67 LEWISBURG MANOR NE

Floor plans

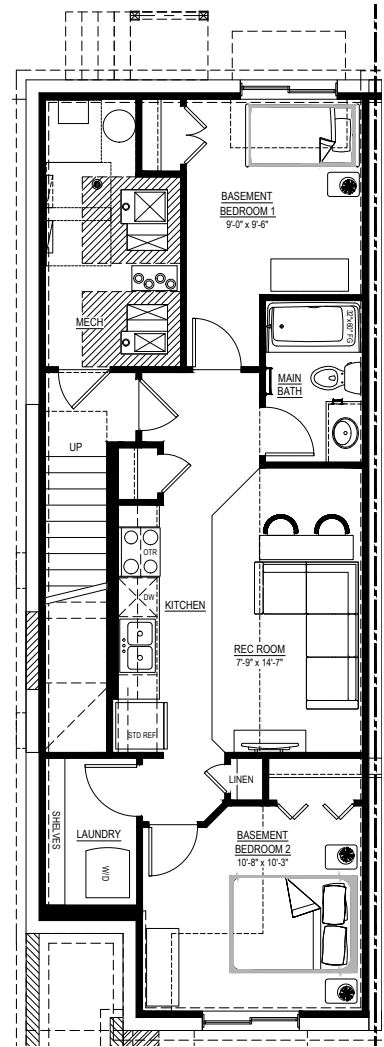
MAIN FLOOR
858 SQ.FT.



SECOND FLOOR
878 SQ.FT.



BASEMENT SUITE
645 SQ.FT.



For more information.

Cathey Tracey
LEWISBURG AREA MANAGER

368-889-7643
LEWISBURG@EXCELHOMES.CA

EXCELHOMES.CA

This floorplan represents one version of this home and measurements are approximate. The square footage, measurements and layout may vary based on the elevation and/or lot. All elevations shown are artist's concept only and will vary by community. The builder reserves the right to make modifications or substitutions should they be necessary. All plans, options, dimensions, specifications, materials and drawings are subject to change without notice. E.&O.E