

Meet the Cohen



QUICK POSSESSION HOME IN LEWISBURG
51 LEWISBURG MANOR NE CALGARY, ALBERTA



DUPLEX
COLLECTION

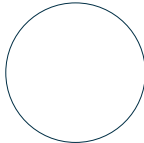
1748 SQ.
FT.

4 3

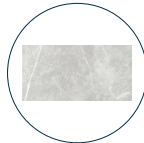
This home's interior palette is the following:



LVP:
Chasing Ice



Cabinets:
White



Backsplash:
Leiva Light Grey



Countertops:
Flurry



Carpet:
Beach Lava



Paint:
Designer Grey

This home features the following:

- Main floor bedroom
- Full bath on main floor
- Level 2 fridge
- Dual sinks to ensuite
- Bank of three drawers to ensuite
- Wood spindled railing
- Elongated toilets
- Additional potlights to bonus room
- Vaulted bonus room ceiling
- Developed basement suite (two bedroom)
- Exterior side entry to basement with poured concrete walkway
- Dual utility meters to basement
- Standard washer & dryer to basement suite
- Gasline to BBQ

Standard features:

- BUILT GREEN® certified home
- Stainless steel appliances
- Thermally fused laminate cabinets
- Luxury vinyl plank throughout entire main floor and second floor wet areas
- Please see your Area Manager for the complete list of standard features

You can purchase this home for:

\$

including home, lot and GST

Home availability:



For more information:



Cathey Tracey
LEWISBURG AREA MANAGER

T: 368-889-7643
E: lewisburg@excelhomes.ca



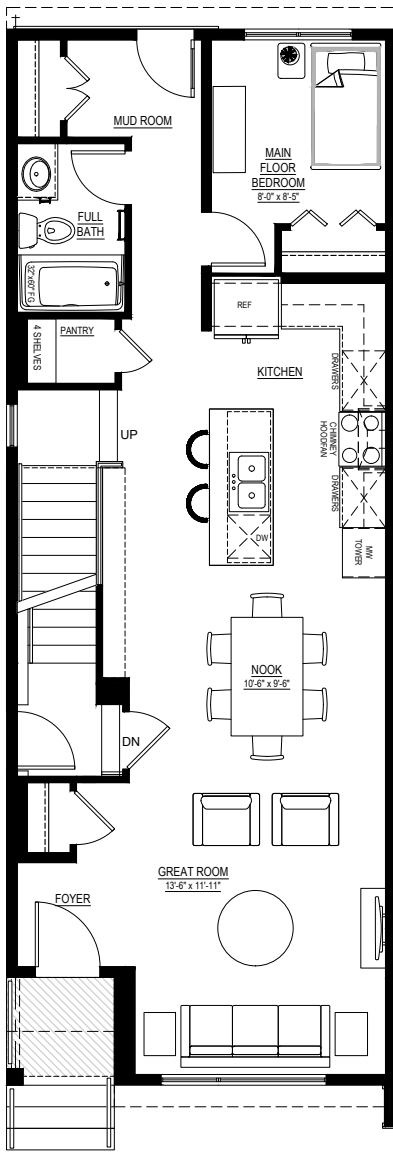
Simplifying your journey home.

Meet the Cohen

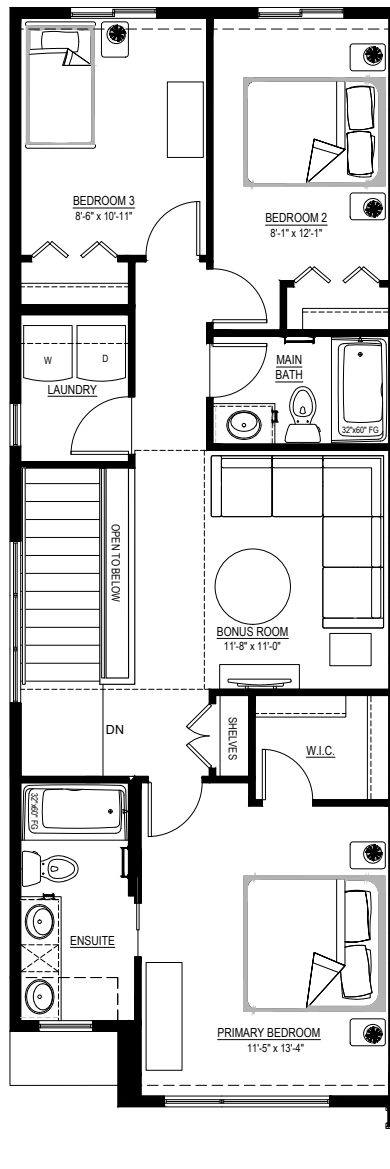
QUICK POSSESSION HOME IN LEWISBURG 51 LEWISBURG MANOR NE

Floor plans

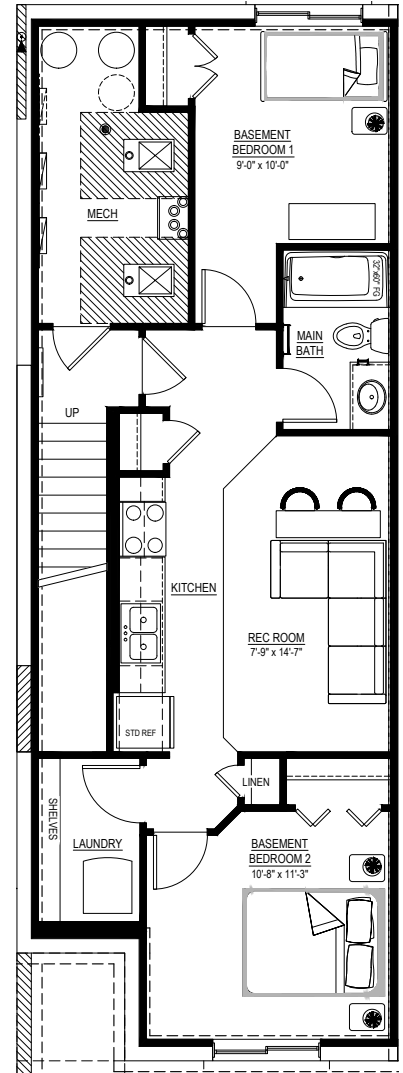
MAIN FLOOR
858 SQ.FT.



SECOND FLOOR
890 SQ.FT.



BASEMENT SUITE
645 SQ.FT.



For more
information.

Cathey Tracey
LEWISBURG AREA MANAGER

368-889-7643
LEWISBURG@EXCELHOMES.CA

EXCELHOMES.CA