

Meet the Cohen

QUICK POSSESSION HOME IN SETON RIDGE
37 SETONVISTA GATE SE CALGARY, ALBERTA



DUPLEX
COLLECTION

1735 SQ.
FT.

3

2.5



This home's interior palette is the following:

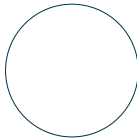
Please see your Area Manager for complete list of interior selections.



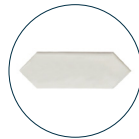
LVP:
Chasing Ice



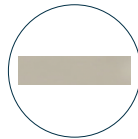
Kitchen Lower,
Ensuite & Bath
Cabinets:
Salt of the Earth



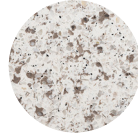
Kitchen Upper
Cabinets:
Cotton Mist



Kitchen
Backsplash:
Fog Glossy



Ensuite, Bath &
Laundry
Backsplash:
Fawn Glossy



Kitchen,
Ensuite & Bath
Countertops:
Oyster Shell



Carpet:
Peaceful



Paint:
Summit

This home features the following:

- Level 2 kitchen
- Level 2 fridge
- Full-height electric fireplace
- Black metal spindled railing
- Upgrade tubshower to shower in ensuite
- Dual sinks to ensuite
- Bank of three drawers to ensuite
- Additional potlights to kitchen, great room & bonus room
- Vaulted bonus room ceiling
- Exterior side entry to basement
- Gasline to BBQ + range
- Standard washer & dryer to basement suite
- Developed basement suite (two bedroom)

Standard features:

- BUILT GREEN® certified home
- Stainless steel appliances
- Thermally fused laminate cabinets
- Luxury vinyl plank throughout entire main floor and second floor wet areas
- Please see your Area Manager for the complete list of standard features

You can purchase this home for:

\$

including home, lot and GST

Home availability:



For more information:



Michelle Walker
SETON RIDGE AREA MANAGER

T: 368-889-7675
E: setonridge@excelhomes.ca

**EXCEL
HOMES**

..... Simplifying your journey home.

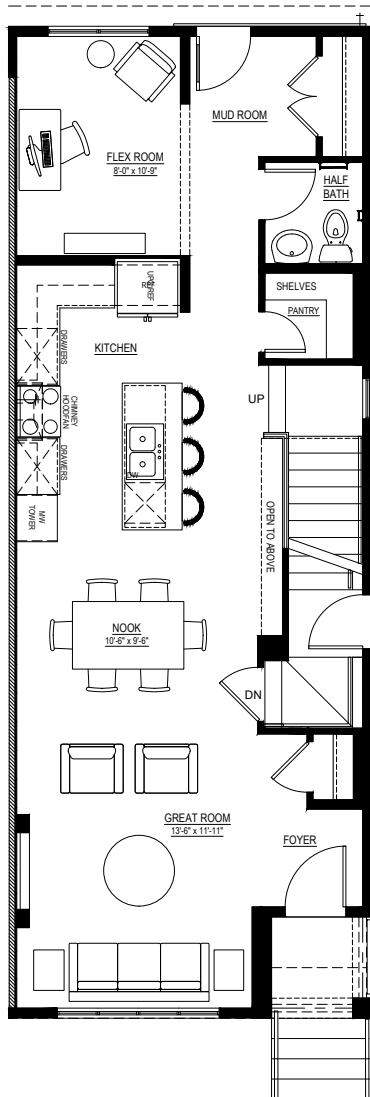
This floorplan represents one version of this home and measurements are approximate. The square footage, measurements and layout may vary based on the elevation and/or lot. All elevations shown are artist's concept only and will vary by community. The builder reserves the right to make modifications or substitutions should they be necessary. All plans, options, dimensions, specifications, materials and drawings are subject to change without notice. E.&O.E

Meet the Cohen

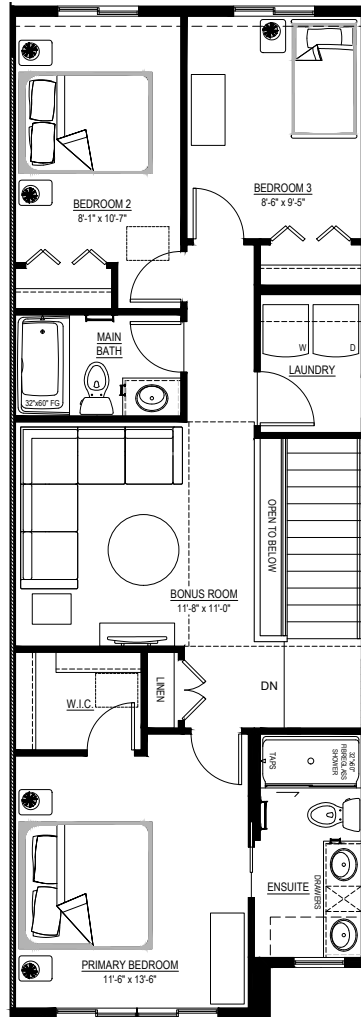
QUICK POSSESSION HOME IN SETON RIDGE 37 SETONVISTA GATE SE

Floor plans

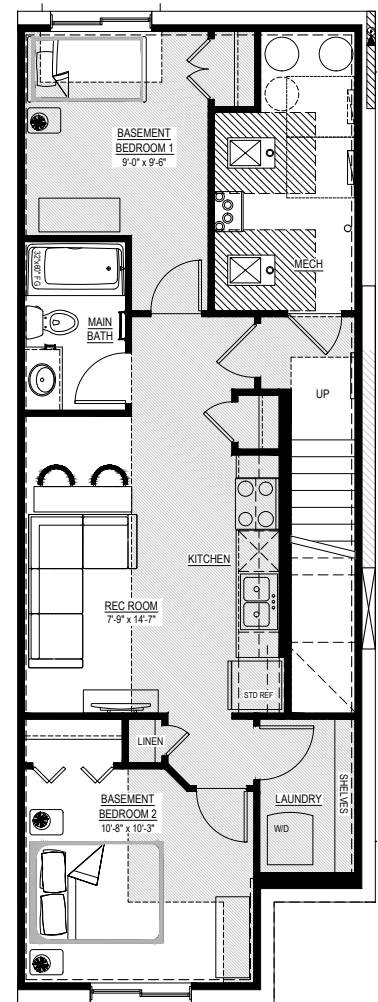
MAIN FLOOR
857 SQ.FT.



SECOND FLOOR
878 SQ.FT.



BASEMENT SUITE
645 SQ.FT.



For more
information.

Michelle Walker
SETON RIDGE AREA MANAGER

368-889-7675
SETONRIDGE@EXCELHOMES.CA

EXCELHOMES.CA

This floorplan represents one version of this home and measurements are approximate. The square footage, measurements and layout may vary based on the elevation and/or lot. All elevations shown are artist's concept only and will vary by community. The builder reserves the right to make modifications or substitutions should they be necessary. All plans, options, dimensions, specifications, materials and drawings are subject to change without notice. E.&O.E