



# Meet the Cohen

QUICK POSSESSION HOME IN SETON RIDGE  
26 SETONVISTA GROVE SE CALGARY, ALBERTA



DUPLEX  
COLLECTION

1736 SQ.  
FT.

3

2.5

## This home's interior palette is the following:

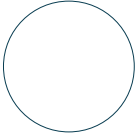
Please see your Area Manager for complete list of interior selections.



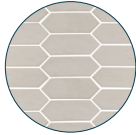
LVP:  
Chasing Ice



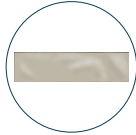
Cabinets:  
Salt of the Earth



Kitchen Upper  
Cabinets:  
Cotton Mist



Kitchen  
Backsplash:  
Fog Glossy



Ensuite & Bath  
Backsplash:  
Fawn Glossy



Countertops:  
Oyster Shell



Carpet:  
Peaceful



Paint:  
Summit

## This home features the following:

- Level 2 kitchen
- Level 2 fridge
- Full-height electric fireplace
- Standard washer & dryer
- Vaulted bonus room ceiling
- Additional potlights to kitchen, great room & bonus room
- Black iron spindled railing
- Bank of three drawers & dual sinks to ensuite
- Upgrade tubshower to shower in ensuite
- Developed basement suite (two bedroom, two bathroom)
- Exterior side entry to basement
- Rear pressure treated landing
- Gasline to BBQ
- Gasline to range

## Standard features:

- BUILT GREEN® certified home
- Stainless steel appliances
- Thermally fused laminate cabinets
- Luxury vinyl plank throughout entire main floor and second floor wet areas
- Please see your Area Manager for the complete list of standard features

## You can purchase this home for:

\$

including home, lot and GST

## Home availability:



## For more information:



**Maci Porter**

SETON RIDGE AREA MANAGER

T: 368-889-7675

E: [setonridge@excelhomes.ca](mailto:setonridge@excelhomes.ca)

**EXCEL  
HOMES**

..... Simplifying your journey home.

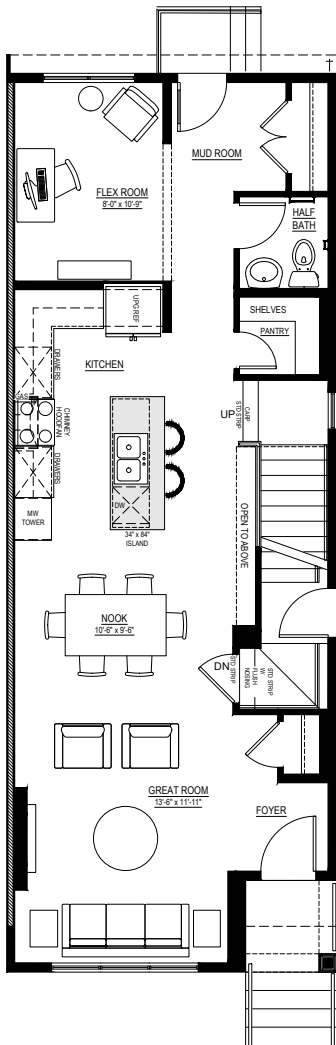
This floorplan represents one version of this home and measurements are approximate. The square footage, measurements and layout may vary based on the elevation and/or lot. All elevations shown are artist's concept only and will vary by community. The builder reserves the right to make modifications or substitutions should they be necessary. All plans, options, dimensions, specifications, materials and drawings are subject to change without notice. E.&O.E

# Meet the Cohen

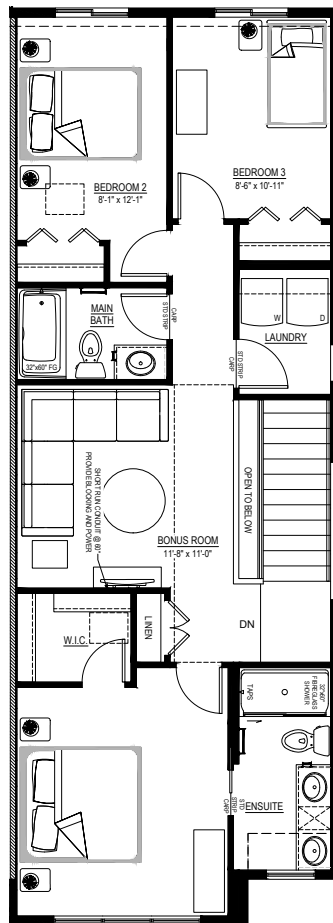
QUICK POSSESSION HOME IN SETON RIDGE 26 SETONVISTA GROVE SE

## Floor plans

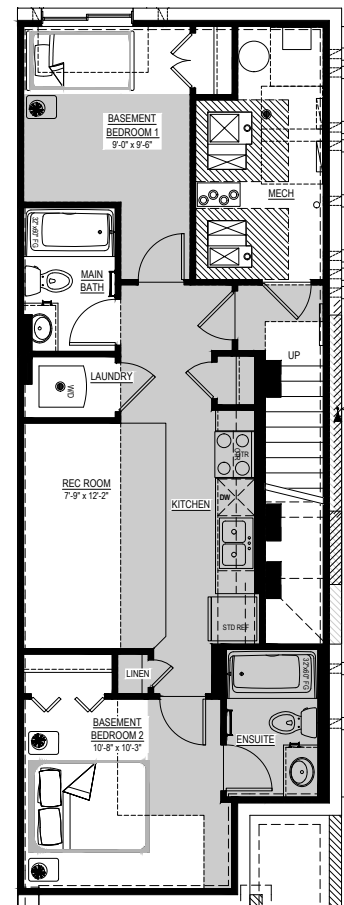
MAIN FLOOR  
858 SQ.FT.



SECOND FLOOR  
878 SQ.FT.



BASEMENT SUITE  
635 SQ.FT.



For more  
information.

**Maci Porter**  
SETON RIDGE AREA MANAGER

**368-889-7675**  
SETONRIDGE@EXCELHOMES.CA

EXCELHOMES.CA

This floorplan represents one version of this home and measurements are approximate. The square footage, measurements and layout may vary based on the elevation and/or lot. All elevations shown are artist's concept only and will vary by community. The builder reserves the right to make modifications or substitutions should they be necessary. All plans, options, dimensions, specifications, materials and drawings are subject to change without notice. E.&O.E.