

Meet the Cohen

QUICK POSSESSION HOME IN SETON RIDGE
18 SETONVISTA GROVE SE CALGARY, ALBERTA



DUPLEX
COLLECTION

1735 SQ.
FT.

3

2.5



This home's interior palette is the following:

Please see your Area Manager for complete list of interior selections.



LVP:
Willow



Cabinets:
Fresh Linen



Kitchen
Backsplash:
Statuario



Basement,
Ensuite & Bath
Backsplash:
Marble



Countertops:
Polaire



Carpet:
Gravel Stone



Paint:
Crystal

This home features the following:

- Level 2 kitchen
- Level 2 fridge
- Full-height electric fireplace
- Standard washer & dryer
- Additional potlights to kitchen, great room & bonus room
- Black metal spindled railing
- Bank of three drawers & dual sinks to ensuite
- Upgrade tubshower to shower in ensuite
- Vaulted bonus room ceiling
- Developed basement suite (two bedroom, two bathroom)
- Exterior side entry to basement
- Gasline to BBQ
- Gasline to range
- Rear pressure treated landing

Standard features:

- BUILT GREEN® certified home
- Stainless steel appliances
- Thermally fused laminate cabinets
- Luxury vinyl plank throughout entire main floor and second floor wet areas
- Please see your Area Manager for the complete list of standard features

You can purchase this home for:

\$

including home, lot and GST

Home availability:



For more information:



Maci Porter

SETON RIDGE AREA MANAGER

T: 368-889-7675

E: setonridge@excelhomes.ca

**EXCEL
HOMES**

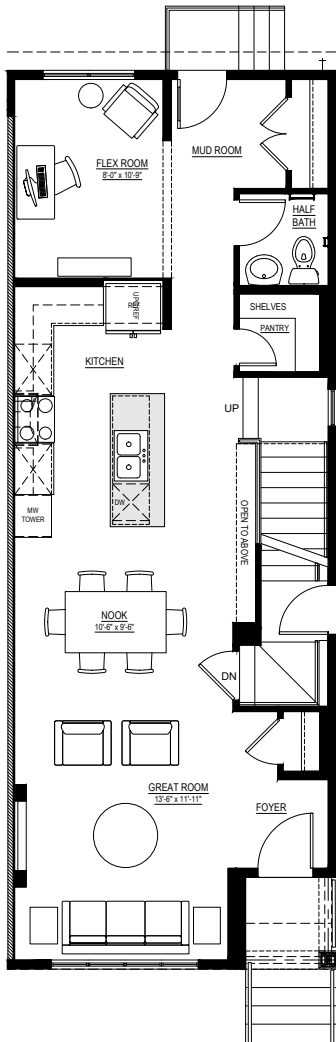
..... Simplifying your journey home.

Meet the Cohen

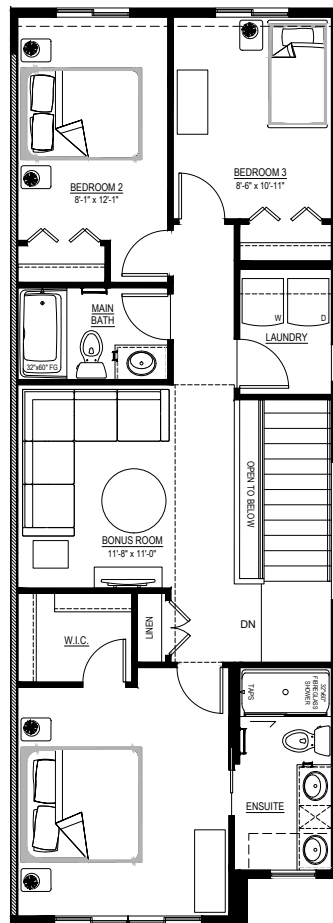
QUICK POSSESSION HOME IN SETON RIDGE 18 SETONVISTA GROVE SE

Floor plans

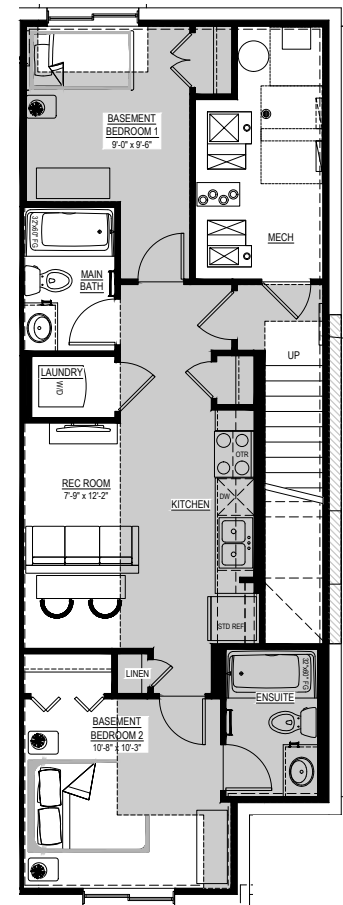
MAIN FLOOR
857 SQ.FT.



SECOND FLOOR
878 SQ.FT.



BASEMENT SUITE
635 SQ.FT.



For more
information.

Maci Porter
SETON RIDGE AREA MANAGER

368-889-7675
SETONRIDGE@EXCELHOMES.CA

EXCELHOMES.CA

This floorplan represents one version of this home and measurements are approximate. The square footage, measurements and layout may vary based on the elevation and/or lot. All elevations shown are artist's concept only and will vary by community. The builder reserves the right to make modifications or substitutions should they be necessary. All plans, options, dimensions, specifications, materials and drawings are subject to change without notice. E.&O.E