

Meet the Cohen



QUICK POSSESSION HOME IN SETON RIDGE
15 SETONVISTA WAY SE CALGARY, ALBERTA



DUPLEX
COLLECTION

1748 SQ.
FT.

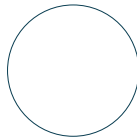
3

2.5

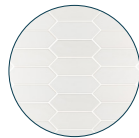
This home's interior palette is the following:



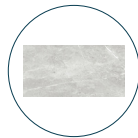
LVP:
Mystery Mile



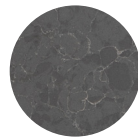
Cabinets:
Cotton Mist



Kitchen
Backsplash:
Boardwalk



Ensuite & Bath
Backsplash:
Leiva Light Grey



Countertops:
Imperial Grey



Carpet:
Ocean Mist



Paint:
Summit

This home features the following:

- Full-height electric fireplace
- Bank of three drawers & dual sinks to ensuite
- Upgrade tubshower to shower in ensuite
- Black farmhouse lighting package
- Standard black plumbing package
- Five panel grooved door upgrade
- Matte black door handles
- Black trim shower door to ensuite
- Black H-cut iron spindled railing
- Vaulted bonus room ceiling
- Additional potlights to kitchen, great room & bonus room
- Basement suite rough-in
- Exterior side entry to basement
- Rear pressure treated landing
- Gasline to BBQ

Standard features:

- BUILT GREEN® certified home
- Stainless steel appliances
- Thermally fused laminate cabinets
- Luxury vinyl plank throughout entire main floor and second floor wet areas
- Please see your Area Manager for the complete list of standard features

You can purchase this home for:

\$

including home, lot and GST

Home availability:



For more information:



Maci Porter
SETON RIDGE AREA MANAGER

T: 368-889-7675
E: setonridge@excelhomes.ca



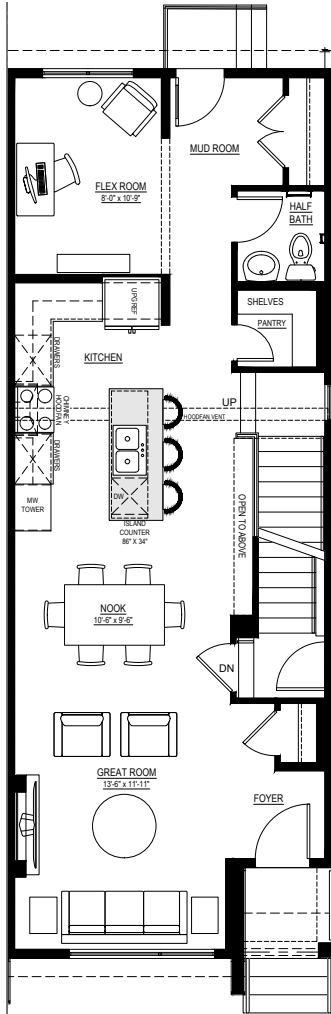
..... Simplifying your journey home.

Meet the Cohen

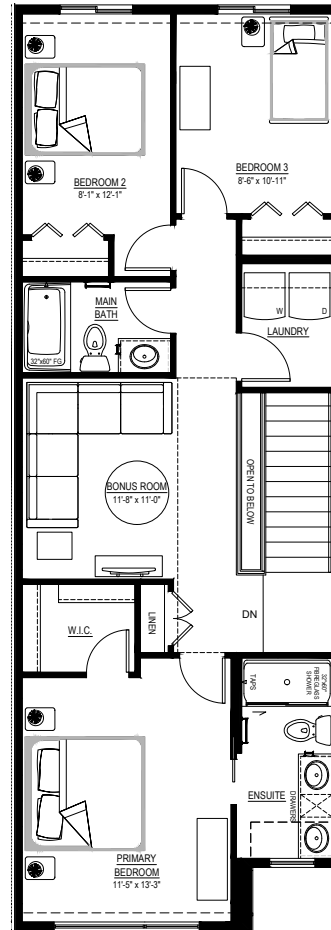
QUICK POSSESSION HOME IN SETON RIDGE 15 SETONVISTA WAY SE

Floor plans

MAIN FLOOR
858 SQ.FT.



SECOND FLOOR
890 SQ.FT.



For more information.

Maci Porter
SETON RIDGE AREA MANAGER

368-889-7675
SETONRIDGE@EXCELHOMES.CA

EXCELHOMES.CA

This floorplan represents one version of this home and measurements are approximate. The square footage, measurements and layout may vary based on the elevation and/or lot. All elevations shown are artist's concept only and will vary by community. The builder reserves the right to make modifications or substitutions should they be necessary. All plans, options, dimensions, specifications, materials and drawings are subject to change without notice. E.&O.E