



# Meet the Cohen

QUICK POSSESSION HOME IN SETON RIDGE  
11 SETONVISTA WAY SE CALGARY, ALBERTA



DUPLEX  
COLLECTION

1736 SQ.  
FT.

3

2.5



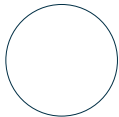
## This home's interior palette is the following:



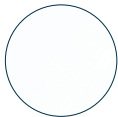
LVP:  
Willow



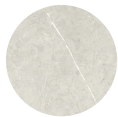
Kitchen,  
Ensuite & Bath  
Cabinets:  
Black



Basement  
Cabinets:  
White



Kitchen  
Backsplash:  
Arctic White  
Glossy



Ensuite & Bath  
Backsplash:  
Centura Cream



Basement  
Kitchen  
Backsplash:  
Centura White  
Glossy



Kitchen  
Countertops:  
Black Pearl



Basement,  
Ensuite  
& Bath  
Countertops:  
Polaire



Carpet:  
Gravel Stone



Main & Second  
Floor Paint:  
Designer Grey



Basement  
Paint:  
Summit

## This home features the following:

- Level 2 kitchen
- Level 2 fridge
- Level 1 matte black door hardware
- Full-height electric fireplace
- French doors to flex room
- Standard washer & dryer
- Bank of three drawers to ensuite
- Dual sinks to ensuite
- Upgrade tubshower to shower in ensuite
- Black metal spindled railing
- Black farmhouse lighting package
- Black pull down faucet to kitchen
- Coal black dual silgranit sinks to kitchen
- Additional potlights to kitchen great room & bonus room
- Vaulted bonus room ceiling
- Exterior side entry to basement
- Rear pressure treated deck
- Gasline to BBQ
- Developed basement suite (two bedroom)

## Standard features:

- BUILT GREEN® certified home
- Stainless steel appliances
- Thermally fused laminate cabinets
- Luxury vinyl plank throughout entire main floor and second floor wet areas
- Please see your Area Manager for the complete list of standard features

## You can purchase this home for:

\$

including home, lot and GST

## Home availability:



JAN

FEB

MAR

APR

MAY

JUN

JUL

AUG

SEP

OCT

NOV

DEC

## For more information:



**Nichola Turner**  
SETON RIDGE SALES ASSOCIATE

T: 368-889-7675

E: [setonridge@excelhomes.ca](mailto:setonridge@excelhomes.ca)

**EXCEL  
HOMES**

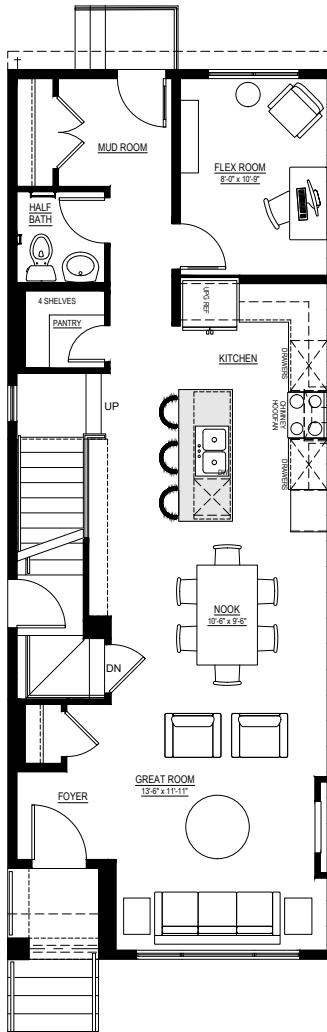
Simplifying your journey home.

# Meet the Cohen

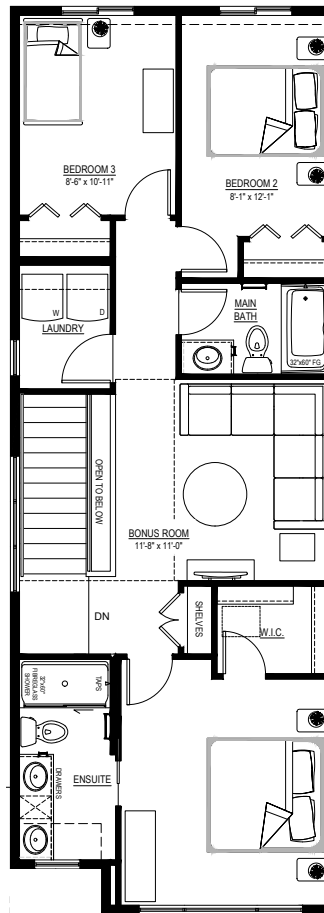
QUICK POSSESSION HOME IN SETON RIDGE 11 SETONVISTA WAY SE

## Floor plans

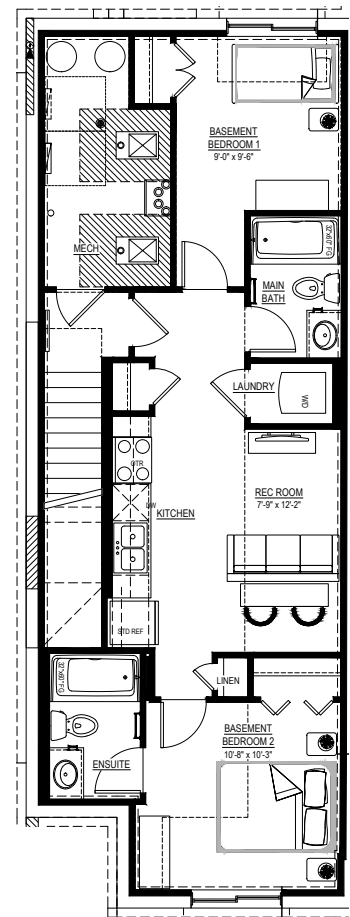
MAIN FLOOR  
858 SQ.FT.



SECOND FLOOR  
878 SQ.FT.



BASEMENT SUITE  
635 SQ.FT.



For more  
information.

**Nichola Turner**  
SETON RIDGE SALES ASSOCIATE

**368-889-7675**  
SETONRIDGE@EXCELHOMES.CA

EXCELHOMES.CA

This floorplan represents one version of this home and measurements are approximate. The square footage, measurements and layout may vary based on the elevation and/or lot. All elevations shown are artist's concept only and will vary by community. The builder reserves the right to make modifications or substitutions should they be necessary. All plans, options, dimensions, specifications, materials and drawings are subject to change without notice. E.&O.E.