

Meet the Berkley

QUICK POSSESSION HOME IN HOMESTEAD
149 HOMESTEAD VIEW NE CALGARY, ALBERTA

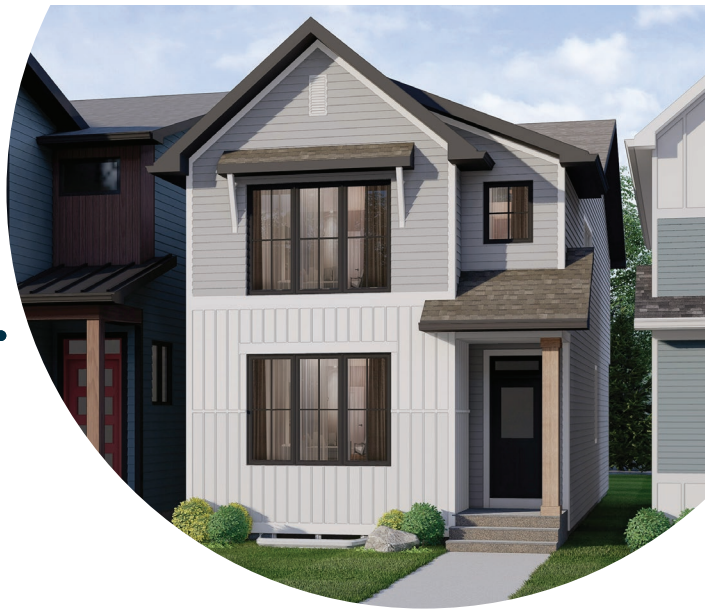


LANED
COLLECTION

1880 SQ.
FT.

4

3



This home's interior palette is the following:



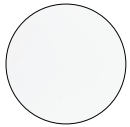
Main Floor &
Laundry LVP:
Point Blank



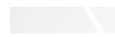
Ensuite &
Second Floor
Bath LVT:
Bombshell



Kitchen Island
& Spice Kitchen
Cabinets:
Black



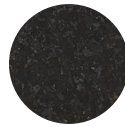
Kitchen,
Ensuite & Bath:
Glacier White



Kitchen &
Spice Kitchen
Backsplash:
Marshmallow



Ensuite & Bath
Backsplash:
White Glossy



Quartz
Countertops:
Black Pearl



Carpet:
Anew Grey



Paint:
Summit

This home features the following:

- Level 2 kitchen
- Level 2 fridge
- Level 3 gas range to spice kitchen
- Level 1 hoodfan to spice kitchen
- Spice kitchen
- Dual silgranit sinks to kitchen
- Kitchen cabinets riser tight to ceiling
- Upgrade tubshower to shower with tile surround on main floor bath & ensuite
- Black farmhouse lighting package
- Standard black plumbing package
- Main floor bedroom
- Full bath on main floor
- Full-height electric fireplace
- Metal spindled railing
- Additional potlights to great room & bonus room
- Vaulted bonus room ceiling
- Rear pressure treated deck
- Gasline to BBQ
- Exterior side entry to basement
- Basement suite rough-in (two bedroom)

Standard features:

- BUILT GREEN® certified home
- Stainless steel appliances
- Thermally fused laminate cabinets
- Luxury vinyl plank throughout entire main floor and second floor wet areas
- Please see your Area Manager for the complete list of standard features

You can purchase this home for:

\$

including home, lot and GST

Home availability:



For more information:



Jeff Van de Cappelle
HOMESTEAD AREA MANAGER

T: 403-475-5817

E: homestead@excelhomes.ca

**EXCEL
HOMES**

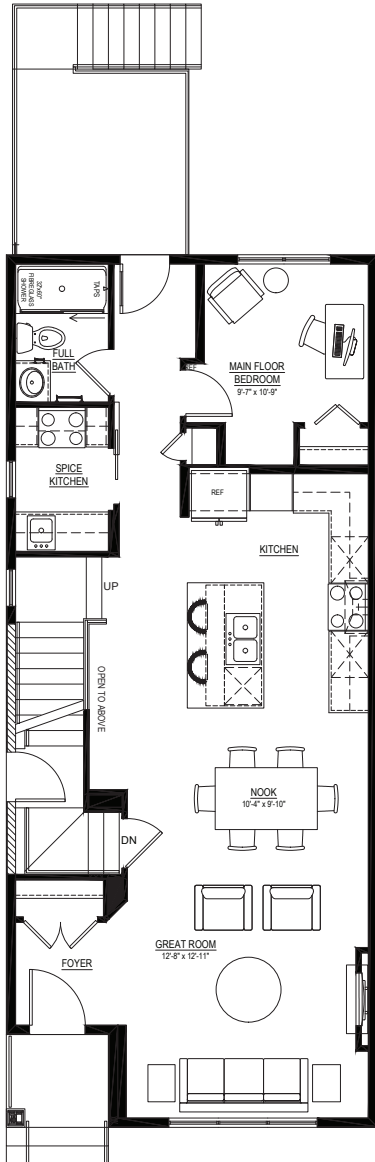
..... Simplifying your journey home.

Meet the Berkley

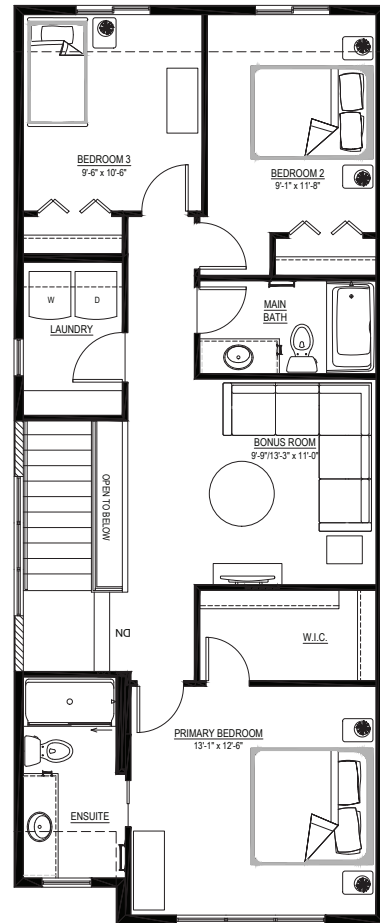
QUICK POSSESSION HOME IN HOMESTEAD 149 HOMESTEAD VIEW NE

Floor plans

MAIN FLOOR
913 SQ.FT.



SECOND FLOOR
967 SQ.FT.



For more
information.

Jeff Van de Cappelle
HOMESTEAD AREA MANAGER

403-475-5817
HOMESTEAD@EXCELHOMES.CA

EXCELHOMES.CA

This floorplan represents one version of this home and measurements are approximate. The square footage, measurements and layout may vary based on the elevation and/or lot. All elevations shown are artist's concept only and will vary by community. The builder reserves the right to make modifications or substitutions should they be necessary. All plans, options, dimensions, specifications, materials and drawings are subject to change without notice. E.&O.E